



3/27/14

VERY IMPORTANT NOTICE: There are two versions of the EDSP software. You **MUST** use the correct version for your FT-950 and must determine the version of your radio on the display (see the below instructions). If your radio displays EDSP version [V1x.xx] or [V2x.xx] choose the correct version EDSP software for your radio:

EDSP Display	Current EDSP Software
V1x.xx	Ver. 11.54
V2x.xx	Ver. 20.47

The main CPU Ver. 1.18 software is the same for all versions of the FT-950 radios.

***IF THE INCORRECT EDSP SOFTWARE VERSION IS INSTALLED
THE RADIO WILL NOT OPERATE***

FT-950

We recommend installing the Flash Programming Software on a PC computer with Windows 2000, XP or Vista Operating System; and use the serial cable RS-232C, DB9F to DB9F straight cable.

NOTE: There are many USB to serial adapters available; however some may not function with this software. We recommend using the latest USB adapter driver software when available.

The software versions can be displayed on the radio

While holding the three buttons [GEN]+[50]+[ENT] turn the radio on. The software version will be displayed in the VFO-A window for 5 seconds, then the radio will start up in normal operation. See below: Example EDSP V11.53 and MAIN V1.12 software version.



*If you already have EDSP V11.54 or V20.47, and MAIN V1.19 software versions, it is not necessary to update the FT-950 again.

The software updates will work with all versions (AF, AS, EU, NA, OC, SA or all Countries) of the FT-950.

Ver. 1.19 MAIN CPU (3/27/14)

- Corrected the contest number automatic increment when there are two or more "#" (automatic increment contest number assign) within a transmission sentence, the increment function automatically is incremented one contest number for one transmission.

[See the notes on page one]

Ver. 11.54 EDSP (12/7/09)

- Correct minor bug and implement improvements

Ver. 20.47 EDSP (11/26/10)

- Correct minor bug and implement improvements

The zip file contains all of the current software versions. Please verify which version software is already on your radio before updating. If you have each of the listed versions, you do not need to update the radio again.

NOTES:

*When menu settings are saved on the DMU-2000 CF card and transferred to the new version, some previous versions may not transfer correctly. Please check your menu, update the settings, and then save the new settings to the CF card.

Install the data file to PC

1. You must select the correct version EDSP file for your FT-950 transceiver.
2. We recommend that you download and save only the version **1** or **2** EDSP software you need for your FT-950 transceiver.
3. Download the FT-950 data file [**FT-950_EDSP (V11.54) and MAIN (V1.18).zip**] or [**FT-950_EDSP (V20.47) and MAIN (V1.18).zip**] from the following website:
<http://www.yaesu.com/indexVS.cfm?cmd=DisplayProducts&ProdCatID=102&encProdID=292E02F4E4D00EC99887A63E7B8ECD1B&DivisionID=65&isArchived=0>
4. Save the FT-950 data file [**FT-950_EDSP (V11.54) and MAIN (V1.19).zip**] or [**FT-950_EDSP (V20.47) and MAIN (V1.19).zip**] to the desktop on your computer.
5. Unzip and Extract the contents of [**FT-950_EDSP (Vxx.xx) and MAIN (V1.19).zip**] to the desktop of your computer.
6. You will find the **FT-950_EDSP** and **FT-950_MAIN** folders on your desktop.

The programmer and software are now stored on your computer on the desktop. The files designated in the last step above are ready to update your FT-950 Transceiver.

IMPORTANT NOTE:

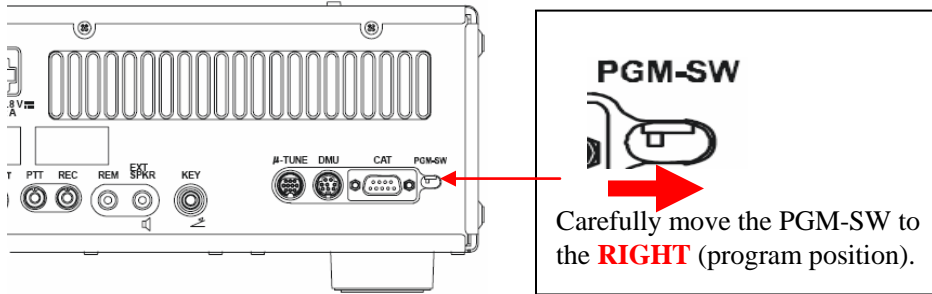
While using any update software, if you receive a “Communications Error !!!” message on your computer screen, follow the below procedure.

When a **Communication Error !!!** occurs, the Main Power must be turned off or the power cable removed, and the programming software closed to reset the procedure. If the reset is not done the communication will never be successful. Make sure the cable is connected correctly, the COM port selection is correct, and the Bits per second default is set to 9600, (it is not necessary to change to another Bits rate) before trying again. If you continue to receive **Communication Error !!!**, you may need to try another USB adapter cable or another computer.

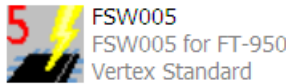
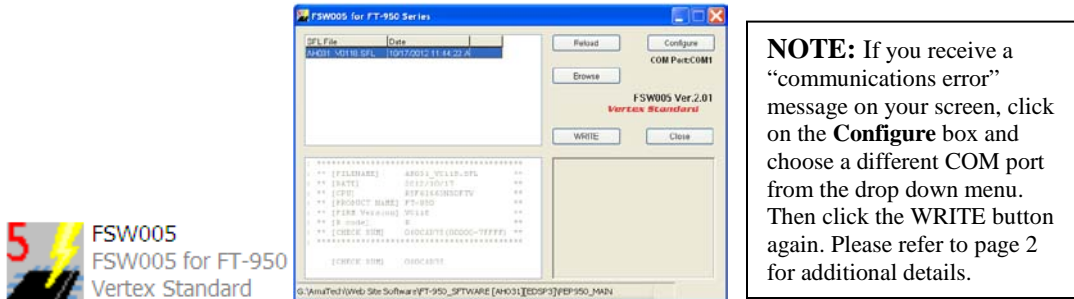
MAIN Software Update

*Don't forget to write down (or save to a CF Card) any personal menu settings you have changed from the default before you start. Please see the DMU-2000 Data Management Operation Manual for the procedure to save your settings to a CF card.

1. Turn the FT-950 OFF and disconnect the DC power cable (or turn OFF the power supply for FT-950 and wait a minute, until the capacitors discharge).
2. Locate the program switch thru the access hole on the back at the rear right corner of the radio. Carefully move the **PGM-SW** to the **RIGHT** (program position).



3. Connect the serial straight through programming cable, DB9F to DB9F, connector to the serial port COM1 in the back of your computer. Plug the DB9F connector to the CAT connector on the FT-950. If you use a USB to serial adapter, you might need to change the COM Port number.
4. Leave the FT-950 turned OFF and connect the DC power cable (or turn ON the power supply for FT-950).
5. Now go to the desktop open PEP950_MAIN folder and find the **FSW005** icon as shown below. Double-click the FSW005 icon, displayed on the Program Screen.



(This image & version is for illustration only)

6. When the program opens, confirm that the file AH031_V0119.SFL is highlighted; if not, click on it to highlight it.
7. Click "Configure" if necessary, to change the COM Port.
8. Click **WRITE**. The onscreen progress bar will indicate programming activity.
9. When programming has completed, "Confirm" will be displayed.
10. Disconnect the DC power cable (or turn OFF the power supply for FT-950 and wait a minute, until the capacitors discharge) and then remove the DB9 serial programming cable.
11. Thru the access hole on the back of the radio, move the **PGM-SW** to the **LEFT**, (operate position).
12. Reconnect the DC power cable (or turn ON the power supply for FT-950).
13. Press and hold in the [FAST] and [LOCK] keys while turning the radio back on. This resets the radio and locks in the new software. Turn the radio off. The main CPU updating process is now complete. Follow the instructions below to update the EDSP.

EDSP Software Update

[See the notes on page one]

This procedure is used for uploading new EDSP Software into the FT-950 Amateur Transceivers, from your personal computer, using the RS-232C, DB9F to DB9F straight cable.

NOTE: The EDSP software update does not make use of the PGM-SW switch so make sure this switch is in the LEFT, (operate position).

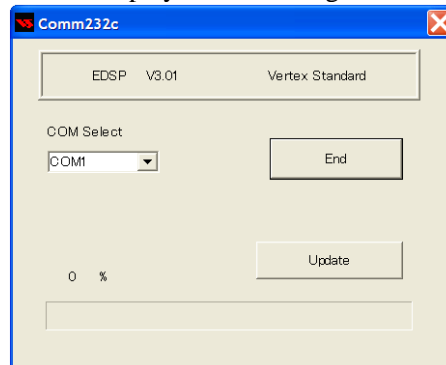
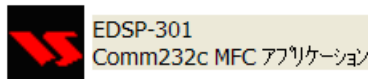
1. Turn the FT-950 OFF and disconnect the DC power cable (or turn OFF the power supply for FT-950 and wait a minute, until the capacitors discharge).
2. Connect a serial RS-232C, DB9F to DB9F straight cable to the COM1 connector of your computer and the 9-pin CAT connector on the rear of the transceiver. If you use a USB to serial adapter, you might need to change the COM Port number.
3. Reconnect the DC power cable (or turn ON the power supply for FT-950).
4. While holding the [SHIFT] + [WIDTH] + [CONT] buttons, press the front main power switch to turn the radio on. You will see [DSP PRG] on the radio display.



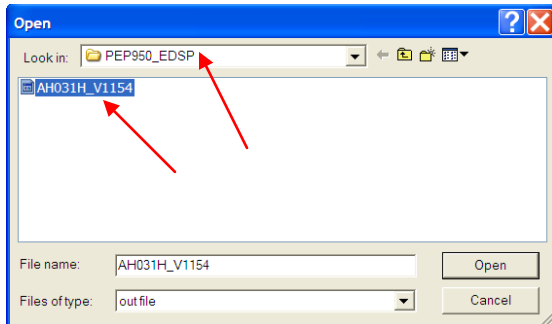
5. If your radio displays EDSP version [V1x.xx] or [V2x.xx] choose the correct version EDSP software for your radio:

EDSP Display	Current EDSP Software
V1x.xx	Ver. 11.54
V2x.xx	Ver. 20.47

6. On your computer desk top open **PEP950_EDSP** folder and find the **EDSP-V302** icon as shown below. Double-click the EDSP-V302 icon, displayed on the Program Screen.



- Click the Update button. You will see AH031H_V1154 or V2047 out file displayed. If you do not see AH031H_V1154 or V2047 (as in the screen below), then open the “Look in:” window and go to the desktop and find **FT-950_EDSP**. Open the folder and **AH031H_V1154** or V2047 will be displayed in the window. Click AH031H_V1154 or V2047 out file to **highlight** it. Then click the Open button and wait until the program is loaded, and 100% is indicated on the bar graph, [Completion!!!] will be displayed.



(This image & version is for illustration only)

NOTE: If you receive a “Communications Error” message on your screen you should check the COM port number and speed under Device Manager. The writing speed **38.4kbps** is fixed in the download algorithm of the DSP board so you may need to set the port speed close to 38.4kbps. Click on the **COM Select** box arrow and choose a different COM port from the drop down menu in the DSP-301 writer. Please refer to page 2 for additional details.

- Turn OFF the front Power Switch and disconnect the DC power cable (or turn OFF the power supply for FT-950 and wait a minute, until the capacitors discharge). This resets the radio and locks in the new software. Remove the DB9F to DB9F cable. The updating process is now complete.

After the update, it is important to reset the FT-950. Plug the radio back in. Press and hold in the [FAST] and [LOCK] keys; while holding them in, turn the radio back on (this resets the radio and locks in the new software).

NOTE: We recommend trying the new factory default settings rather than transferring your old ones, because of the changes in the EDSP and the Main CPU, you may wish to make new settings.

We hope this new software will increase your enjoyment of your FT-950. Thank you for choosing Yaesu radios. If you have any problems or questions, please contact Yaesu Amateur Tech Support amateurtech@yaesu.com.

Best regards,

Mikio Maruya, WA6F
Executive Vice President
Engineering & Customer Service
Yaesu USA