



9/28/12

This procedure is used to update the flash programming for the **FT-450/ FT-450AT transceiver.**

CAUTION

Verify your radio is the FT-450 by the logo on the right side of the transceiver front panel. Do not install this firmware to your FT-450D. The software is not compatible and will not operate at all.

We recommend installing the Flash Programming Software on a PC computer with Windows 2000, XP or Vista Operating System.

The update software is available from our website at <http://www.yaesu.com>.

Ver. 0228 implements improvements:

- The USA 5MHz (60m) channel frequency change US3 (5.368MHz to 5.3585MHz).
- Permit CW transmission on the USA 5MHz (60m) channels.
- The beacon setting MENU time is changed. The new setting is up to 690 seconds.

NOTES: After installing main software Ver. 0228;

- The DATA MODEM must be connected to the DATA connector on the rear panel. PKT-PTT transmissions will disconnect the microphone.
- The TNC (PSK sub carrier) setting must be 1.5 KHz.
- Select the USB or CW operating mode for each channel with the [MODE] switch.

The software updates will work with all versions (AF, AS, EU, NA, OC, SA or all Countries) of the FT-450/FT-450AT.

PART 1

Install the data file to PC

1. Down load the FT-450 data file [**FT-450_V0228_w_FSW006_20120927.zip**] from the following website:
<http://www.yaesu.com/indexVS.cfm?cmd=DisplayProducts&ProdCatID=102&encProdID=lrQWz2I2xwo%3D&DivisionID=65&isArchived=0>
2. Save the FT-450 data file [**FT-450_V0228_w_FSW006_20120927.zip**] to a temporary folder on your hard drive.
3. Unzip and Extract the contents of “**FT-450_V0228_w_FSW006_20120927.zip**” to a desktop or local disk C:\temp of your computer.
4. Two files named [FSW006_V203.exe] and [Ah024_v0228.sfl] will be found in a desktop or local disk C:\temp.

PART 2

RS-232C, DB9F to DB9F straight cable

*You will need a serial cable RS-232C, DB9F to DB9F straight cable to connect the FT-450 transceiver to your computer.

**Don't forget to write down any menu settings you have changed from the default before you start.*

1. Turn the FT-450 off and disconnect the DC power cable.
2. Locate the program switch thru the access hole on the bottom at the front left corner of the radio. Carefully move the switch to the **right** (program position).

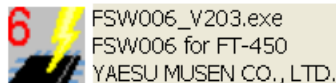


3. Connect the serial straight through programming cable, DB9F to DB9F, connector to the serial port COM1 in the back of your computer. Plug the DB9F connector to the CAT connector on the FT-450.

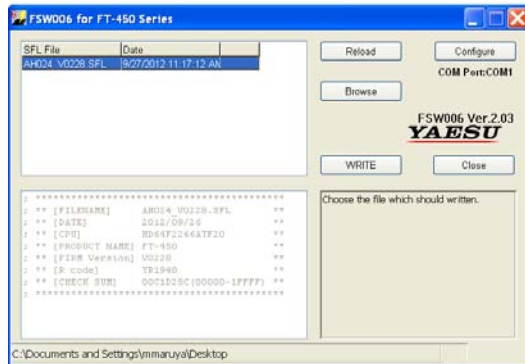
NOTE:

You may also use a USB to Serial adaptor such as the RT-Systems (RTS-03) being one example, if the DB-9 (RS-232C) serial port is not available on your computer. (There are many adapters available; however some may not function with this software. We recommend using the latest USB adapter driver software when available). If the installation is not successful, the radio may not power on. In this case you should not use the USB adapter. Use another computer with a serial port **DB-9** (RS-232C) and do the software update with a DB-9 straight cable as described in steps #1 to #3.

4. Leave the FT-450 turned OFF and connect the DC power cable.
5. Now go to the desktop or local disk C:\temp and find the **FSW006** as shown below. Double-click **the FSW006** icon, displayed on the Program Screen.




6. Confirm the SFL file is AH024_V0228.SFL. If it is necessary to change the COM Port, Click "Configure"
7. Click **WRITE**. The onscreen progress bar will indicate programming activity.
8. When programming has completed, "Confirm" will be displayed.



9. Disconnect the DC power cable and then remove the DB9 serial programming cable.
10. Thru the access hole on the bottom of the radio, move the program switch to the **left**, operate position.
11. Reconnect the DC power.
12. Press and hold the **Home/Recall** button, and press the **Power** button to turn the FT-450 on to reset the defaults. The FT-450 will show 7.000.00 MHz. The updating process is now complete.

The software version can be displayed on the radio

While holding the MODE button  turn the radio on. The software version will be displayed in the window **0228**. Then turn the radio off and back on again for normal operation.

We hope this new software will increase your enjoyment of your FT-450/FT-450AT. Thank you for choosing Yaesu radios. If you have any problems or questions, please contact Yaesu, Amateur Tech Support amateurtech@yaesu.com.

Best regards,

Mikio Maruya, WA6F
 Executive Vice President
 Engineering & Customer Service
 Yaesu USA