



8/23/16

This procedure is used to update the flash programming for the **FT-450D transceiver.**

CAUTION

Verify your radio is the FT-450D by the logo on the right side of the transceiver front panel. Do not install this firmware to your FT-450 or FT-450AT. The firmware is not compatible and will not operate at all.

The update firmware is available from our website at <http://www.yaesu.com>.

Ver. 0244 implements improvements:

- Improved and optimized.

The firmware updates will work with all versions (AF, AS, EU, NA, OC, SA or all Countries) of the FT-450D.

PART 1

Install the data file to PC

1. Download the FT-450D data file [FT-450D_V0244_w_FSW006_20160823.zip] from the following website:
<http://www.yaesu.com/indexVS.cfm?cmd=DisplayProducts&ProdCatID=102&encProdID=870B3CA7CFCB61E6A599B0EFEA2217E4&DivisionID=65&isArchived=0>
2. Save the FT-450D data file [FT-450D_V0244_w_FSW006_20160823.zip] to a temporary folder on your hard drive.
3. Unzip and Extract the contents of "FT-450D_V0244_w_FSW006_20160823.zip" to a desktop or local disk C:\temp of your computer.
4. Two files named [FSW006_V203.exe] and [Ah024_v0244.sfl] will be found in a desktop or local disk C:\temp.

PART 2

RS-232C, DB9F to DB9F straight cable

*You will need a serial cable RS-232C, DB9F to DB9F straight cable to connect the FT-450D transceiver to your computer.

****Don't forget to write down any menu settings you have changed from the default before you start.***

1. Turn the FT-450D off and disconnect the DC power cable.
2. Locate the program switch thru the access hole on the bottom at the front left corner of the radio. Carefully move the switch to the **right** (program position).

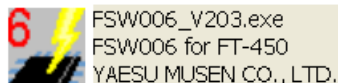


3. Connect the serial straight through programming cable, DB9F to DB9F, connector to the serial port COM1 in the back of your computer. Plug the DB9F connector to the CAT connector on the FT-450D.

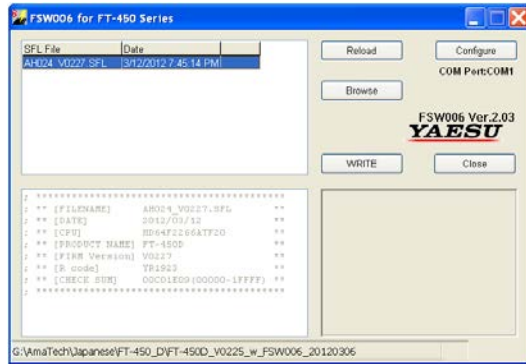
NOTE:

You may also use a USB to Serial adaptor such as the RT-Systems (RTS-03) being one example, if the DB-9 (RS-232C) serial port is not available on your computer. (There are many adapters available; however some may not function with this firmware. We recommend using the latest USB adapter driver firmware when available). If the installation is not successful, the radio may not power on. In this case you should not use the USB adapter. Use another computer with a serial port **DB-9** (RS-232C) and do the firmware update with a DB-9 straight cable as described in steps #1 to #3.

4. Leave the FT-450D turned OFF and connect the DC power cable.
5. Now go to the desktop or local disk C:\temp and find the **FSW006** as shown below. Double-click the **FSW006** icon, displayed on the Program Screen.




6. Confirm the SFL file is AH024_V0244.SFL. If it is necessary to change the COM Port, Click "Configure"
7. Click **WRITE**. The onscreen progress bar will indicate programming activity.
8. When programming has completed, "Confirm" will be displayed.



9. Disconnect the DC power cable and then remove the DB9 serial programming cable.
10. Thru the access hole on the bottom of the radio, move the program switch to the **left**, operate position.
11. Reconnect the DC power.
12. Press and hold the **Home/Recall** button, and press the **Power** button to turn the FT-450D on to reset the defaults. The FT-450D will show 7.000.00 MHz.
The updating process is now complete.

The firmware version can be displayed on the radio

While holding the MODE button  turn the radio on. The firmware version will be displayed in the window **0244**. Then turn the radio off and back on again for normal operation.

We hope this new firmware will increase your enjoyment of your FT-450D. Thank you for choosing Yaesu radios. If you have any problems or questions, please contact Yaesu, Amateur Tech Support amateurtech@yaesu.com.

Best regards,

Mikio Maruya, WA6F
Executive Vice President
Engineering & Customer Service
Yaesu USA