

YAESU
The radio

WIRES-X

Wide-Coverage Internet Repeater Enhancement System

WIRES-X Portable Digital Node Function Instruction Manual

The C4FM digital transceivers that support the Portable Digital Node Function are FT5D, FT3D, FT2D, FTM-500D, FTM-400XD/D, FTM-300D, FTM-200D and FTM-100D. (As of Apr 2023)

Other C4FM digital transceivers do not require WIRES-X user registration and may immediately enjoy Internet communications by connecting to a WIRES-X local node that is within radio range.

Preparation Procedure

Portable Digital Node operation requires a compatible transceiver (FT5DR/DE, FT3DR/DE, FT2DR/DE, FTM-500DR/DE, FTM-400XDR/XDE/DR/DE, FTM-300DR/DE, FTM-200DR/DE or FTM-100DR/DE (as of Apr 2023)) and a Personal computer (Windows 8.1 or later) with USB terminal.

- ① **User registration (acquire an ID number)**
 - ② **Install WIRES-X Software to the PC**
 - ③ **Install the connection cable USB device driver**
 - ④ **Update the firmware of the transceiver**
 - ⑤ **Connect the transceiver and the PC**
- **Depending on the transceiver used, one or more of the following connection cables is required.**
 - ❑ **FT5DR/DE, FT3DR/DE or FT2DR/DE**
 - **SCU-57 or SCU-39 WIRES-X Connection Cable Kit**
(The SCU-57 or SCU-39 includes the SCU-55 or SCU-19, CT-44, and two audio cables.)
 - ❑ **FTM-500DR/DE, FTM-300DR/DE or FTM-200DR/DE**
 - **SCU-58 or SCU-40 WIRES-X Connection Cable Kit**
(The SCU-58 or SCU-40 includes the SCU-56 or SCU-20 and an audio cable.)
 - ❑ **FTM-400XDR/XDE/DR/DE or FTM-100DR/DE**
 - When communicating with the digital node station in the portable digital node mode**
 - **SCU-56 or SCU-20 PC Connection Cable** (Supplied with the transceiver)
 - When communicating with a digital node station or an analog node station in the portable HRI mode via the Internet**
 - **SCU-58 or SCU-40 WIRES-X Connection Cable Kit**
(The SCU-58 or SCU-40 includes the SCU-56 or SCU-20 and an audio cable.)

① User registration (acquire an ID number)

Access the WIRES-X web page and register with the “**Radio ID**” of the transceiver to be used for the Portable Digital Node station.

Refer to page 7 for details.



② Install WIRES-X Software to the PC

Download “**WIRES-X Software**” from WIRES-X website (user login required) and install it to the PC for the node station.

Refer to page 9 for details.



③ Install a USB device driver for the PC connection cable

Download the USB device driver from YAESU website and install it to a PC.

Refer to page 10 for details.



④ Update the firmware of the transceiver

Download the latest firmware of the transceiver from our website and update the firmware of the transceiver for the Portable Digital Node station.

Refer to page 9 for details.



⑤ Connect the transceiver and the PC

Connect the transceiver and the PC with the designated connection cables.



Refer to page 12 for details.

Table of contents

Preparation Procedure	1
About this manual	2
Introduction	3
What is WIRES-X?	3
What is WIRES-X Portable Digital Node Function?	3
System Requirements (Operating Environment)	6
Preparation	7
① User registration (acquire an ID number)	7
② Install latest WIRES-X software to the PC	9
③ Install the USB driver for the PC connection cable	10
④ Update the firmware of the transceiver	11
⑤ Connect the transceiver and the PC	12
Communicating only with C4FM digital mode (Portable Digital Node Mode)	12
Communicating with digital or analog FM mode (Portable HRI Mode)	13
Initial Setting (setting is required only once at the beginning)	15
Start the transceiver	15
Starting the WIRES-X software	16
Communication port setting	16
Authenticate (activate) the WIRES-X server	17
Transceiver settings (Access Point only)	18
Basic Operation	20
Using the Portable Digital Node Mode	20
Connecting the transceiver and the PC	20
Starting the WIRES-X software	20
Starting the transceiver in special mode	20
Setting the transceiver (Access Point only)	22
Start operation of Portable Node	30
Connecting to a node or a room on the Internet	42
Communicating with other station	56
Disconnecting from the node or room	57
Closing the WIRES-X software	57
Using the Portable HRI Mode	60
Connecting the transceiver and the PC	60
Starting the WIRES-X software	60
Starting the transceiver in special mode	60
Connecting a node or a room by operating the WIRES-X software on the PC	61
Communicating with other station	62
Disconnecting from the node or room	63
Closing the WIRES-X software	63
Operating the transceiver in Portable HRI Mode	64
WIRES-X Software Main Screen	66
Functions to use as necessary	69
Audio volume adjustment of PC (Portable HRI Mode only)	69
Adjusting Audio Level in the Access Point (Portable HRI Mode)	69
Adjusting Audio Level in the Direct Operation (Portable HRI Mode)	71
FT5D/FT3D/FT2D Direct Operation dedicated function	75
Bookmarking frequently connected Nodes or Rooms	76
Bookmarking Nodes or Rooms	76

About this manual

Reference icon symbols and conventions are used in this manual. Their meanings are described in the below chart.

Symbols	Description
	This icon indicates cautions and information that should be read.
	This icon indicates notes, tips and information that should be read.

Introduction

What is WIRES-X?

WIRES (Wide-coverage Internet Repeater Enhancement System) is an Internet communication system which expands the range of amateur radio communication. WIRES-X uses local nodes (stations connected to the Internet via PCs) as access points to relay communications of conventional amateur radio stations. Mobile stations using WIRES-X can communicate with amateur stations all over the world by using a local node access station operating within an amateur band. WIRES-X supports the new C4FM digital communications mode, enabling C4FM digital signals to be repeated without deterioration of the communication quality. In addition, several new functions making use of digital formats are also made available.

What is WIRES-X Portable Digital Node Function?

Using the WIRES-X Portable Digital Node function, a WIRES-X digital node station can operate by directly connecting a compatible C4FM digital transceiver with a PC. The HRI-200 Internet interface kit is not needed and no fixed or dynamic global IP address is required.)

There are two operating modes of the WIRES-X Portable Digital Node function:

Portable Digital Node Mode capable of Internet communication with digital stations.

Portable HRI Mode capable of Internet communication with both digital and analog stations.

Portable Digital Node Mode (Supports Internet communication only in C4FM Digital Mode)

Requires a Yaesu C4FM Portable Digital Node capable transceiver. FT5D, FT3D, FT2D, FTM-500D, FTM-400XD/D, FTM-300D, FTM-200D or FTM-100D; and a PC with WIRES-X Software and an Internet connection. An SCU-55 or SCU-19 PC Connection Cable is needed to connect the FT5D, FT3D or FT2D. An SCU-56 or SCU-20 PC Connection Cable is needed to connect the FTM-500D, FTM-400XD/D, FTM-300D, FTM-200D or FTM-100D.

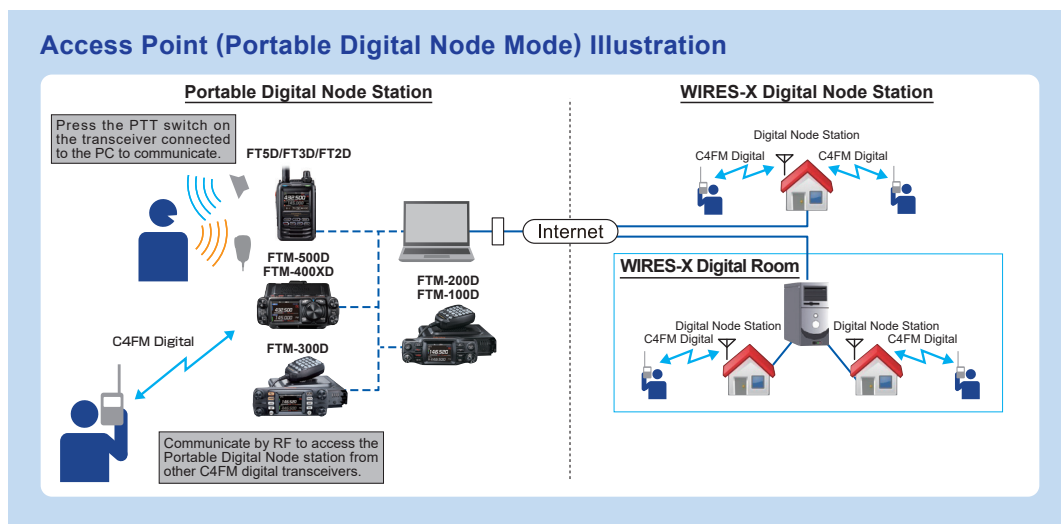
Two forms of WIRES-X Access are supported, “**Access Point**” and “**Direct Operation**”.

In “**Access Point**” the Portable Node station (FT5D, FT3D, FT2D, FTM-500D, FTM-400XD/D, FTM-300D, FTM-200D or FTM-100D) can be used to communicate “On Air and relay nearby local C4FM digital transceivers, while simultaneously connected with the Internet WIRES-X digital rooms and digital node stations.

In “**Direct Operation**”, the Portable Node (FT5D, FT3D, FT2D, FTM-500D, FTM-400XD/D, FTM-300D, FTM-200D or FTM-100D) station transceiver is used only for WIRES-X Internet communications without transmitting or receiving local “On Air” radio signals.

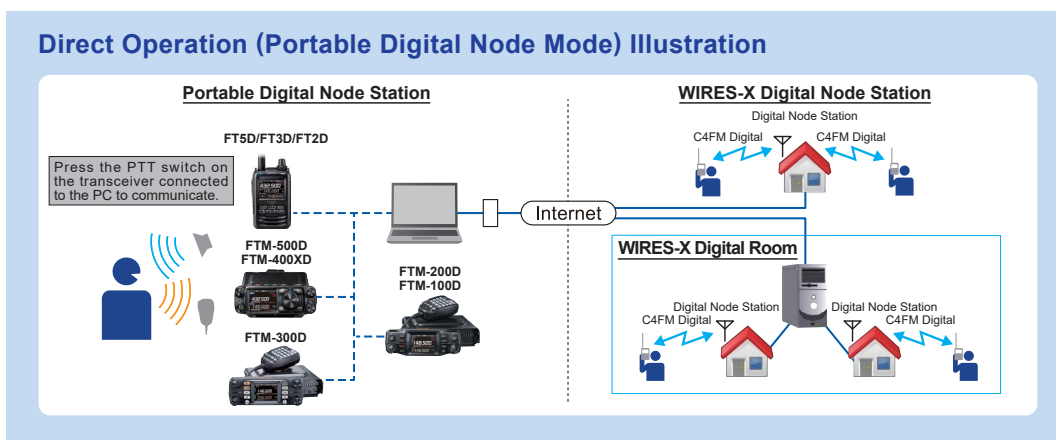
● **Access Point**

In this mode, WIRES-X C4FM communications are made by either directly using the USB connected Portable Digital Node Station transceiver PTT, microphone, and speaker, or via another local C4FM transceiver communicating on frequency with the USB connected Portable Digital Node Station transceiver. The Portable Digital Node Station transceiver connects directly to the PC and the Internet, and then communicates with WIRES-X Nodes and Rooms. The Portable Digital Node Station transceiver relays the local C4FM stations and signals to the Internet and transmits the Internet Node and Room signals to the local stations. This mode allows the flexibility to operate the Portable Digital Node directly from a single USB connected Portable Digital Node Station transceiver, or to access WIRES-X Nodes and Rooms from one or several local C4FM transceivers.



● **Direct Operation**

In this mode, WIRES-X C4FM communications are made directly by using the USB connected Portable Digital Node Station transceiver Node Station. The microphone signal is sent only to the PC and the Internet. The Internet signals are heard only in the Portable Digital Node Station transceiver speaker. In this Direct Operation, the Portable Digital Node Station transceiver does not transmit or receive over the air.



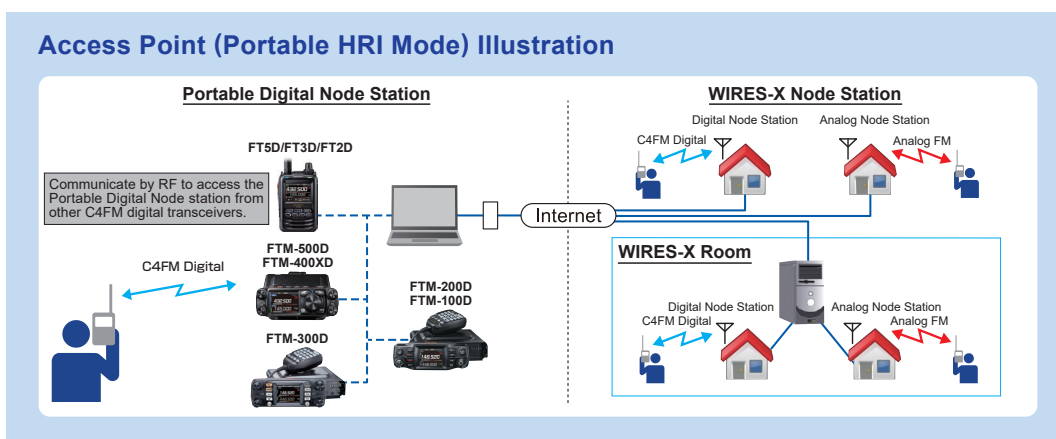
Portable HRI Mode (Supports Internet communication in both C4FM Digital Mode and Analog Mode)

Requires a Yaesu C4FM Portable Digital Node capable transceiver, a USB Connection Cable, audio cables and a PC with WIRES-X Software and Internet connection. (The HRI-200 interface is not used).

In the Portable HRI Mode configuration, either the Access Point operation or the Direct operation may be activated:

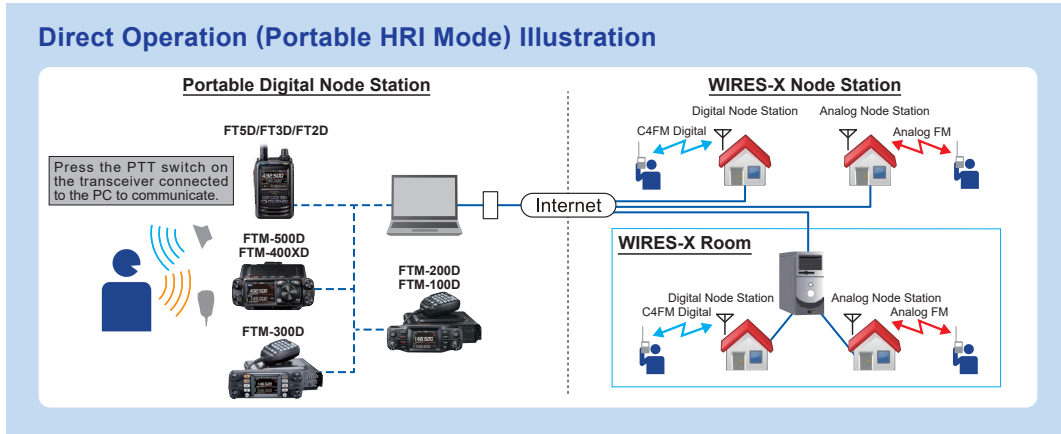
● **Access Point (Portable HRI Mode)**

In this mode, WIRES-X C4FM and Analog communications are made via another local C4FM transceiver communicating on frequency with the connected Portable Digital Node Station. The Portable Digital Node Station transceiver relays the local C4FM and Analog signals to the Internet and transmits the Internet Node and Room signals to the local stations. This Node mode allows the flexibility to operate the Portable Digital Node to access WIRES-X Nodes and Rooms from one or several local C4FM transceivers.



● Direct Operation (Portable HRI Mode)

In this mode, you can communicate in digital mode or analog mode via the Internet. WIRES-X communications are made directly by using the USB connected Portable Digital Node Station Transceiver. The microphone signal is sent only to the PC and the Internet. The Internet signals are heard only in the Portable Digital Node Station transceiver speaker. (When communicating in “**Direct Operation**” on “**Portable HRI Mode**” using FT5D, FT3D or FT2D, the Internet signals are heard only from the PC speaker.) In this Direct Operation, the Portable Digital Node Station transceiver does not transmit or receive over the air.



With the WIRES-X Portable Digital Node function, you cannot operate a WIRES-X Room (Including a digital room) or use the remote-control function from the outside.

System Requirements (Operating Environment)

● Supported Transceivers

- FT5D, FT3D, FT2D, FTM-500DR/DE, FTM-400XDR/XDE/DR/DE, FTM-300DR/DE, FTM-200DR/DE or FTM-100DR/DE (As of Apr 2023)

● The latest WIRES-X Software and Transceiver Firmware



Update to the latest software and firmware on YAESU website.

- **WIRES-X Software** : Ver.1.550 or later
- **FT5D** MAIN: Ver.1.11 or later, SUB: Ver.1.01 or later, DSP: Ver.7.11 or later
- **FT3D** MAIN: Ver.1.02 or later, SUB: Ver.1.02 or later, DSP: Ver.7.02 or later
- **FT2D** MAIN: Ver.3.10 or later, SUB: Ver.2.01 or later, DSP: Ver.4.31 or later
- **FTM-500D** MAIN: Ver.1.01 or later, SUB: Ver.1.01 or later, DSP: Ver.7.20 or later
- **FTM-400XD** MAIN: Ver.4.50 or later, DSP: Ver.4.31 or later
- **FTM-400D** MAIN: Ver.3.50 or later, DSP: Ver.4.31 or later
- **FTM-300D** MAIN: Ver.1.40 or later, SUB: Ver.1.20 or later, DSP: Ver.7.11 or later
- **FTM-200D** MAIN: Ver.1.00 or later, SUB: Ver.1.00 or later, DSP: Ver.7.11 or later
- **FTM-100D** MAIN: Ver.2.50 or later, PANEL: Ver.2.10 or later, DSP: Ver.4.31 or later

● Connection Cables

FT5DR/DE, FT3DR/DE or FT2DR/DE

- **SCU-57 or SCU-39 WIRES-X Connection Cable Kit**

(The SCU-57 or SCU-39 includes the SCU-55 or SCU-19, CT-44, and two audio cables.)

FTM-500DR/DE, FTM-300DR/DE or FTM-200DR/DE

- **SCU-58 or SCU-40 WIRES-X Connection Cable Kit**

(The SCU-58 or SCU-40 includes the SCU-56 or SCU-20 and an audio cable.)

FTM-400XDR/XDE/DR/DE or FTM-100DR/DE

When communicating with a digital node station in a portable digital mode

- **SCU-56 or SCU-20 PC Connection Cable** (Supplied with the transceiver)

When communicating with a digital node station or an analog node station in the portable HRI mode via the Internet

- **SCU-58 or SCU-40 WIRES-X Connection Cable Kit**

(The SCU-58 or SCU-40 includes the SCU-56 or SCU-20 and an audio cable.)

● PC

- Supported OS: Microsoft® Windows® 11 / 10 / 8.1

WIRES-X Connection Cable Kit	Windows® 11	Windows® 10	Windows® 8.1
SCU-57 / SCU-58	✓	✓	✓
SCU-39 / SCU-40		✓	✓

NOTE: The SCU-39/SCU-40 can use the same driver software as the SCU-57/SCU-58, but the SCU-39/SCU-40 cannot be used with Windows 11.

- Processor Clock Frequency : 2.0GHz or faster
- HDD: 1 GB or more of available space
- RAM: 2 GB or more
- Display resolution: 1366 x 768 16-bit high color or higher (32-bit true color is recommended)
- USB port: USB 2.0 (Full Speed)
- LAN port: 100BASE-TX/1000BASE-T or Wi-Fi : IEEE 802.11 b or higher
- Audio Interfaces*¹
 - *¹Sound function is also required when using the “**Portable Digital Node Mode**” or “**Portable HRI Mode**”. Furthermore, when communicating in “**Direct Operation**” in “**Portable HRI Mode**” using the **FT5D**, **FT3D** or **FT2D** the personal computer must have the “audio input from the microphone terminal pass to the speaker output” function.
- 3.5Φ speaker terminal, 3.5Φ microphone terminal*² (It is necessary only for Internet communication in “Portable HRI Mode”.)
 - *²In the case of a unique terminal such as a laptop, adapt it to a 3.5Φ speaker terminal and 3.5Φ microphone terminal with a commercially available conversion cable.
- Speaker (It is necessary only when communicating in “Direct Operation” in “Portable HRI Mode”.)

● Internet Connection

- ADSL 8 Mbps or faster (No fixed or dynamic global IP address is required.)

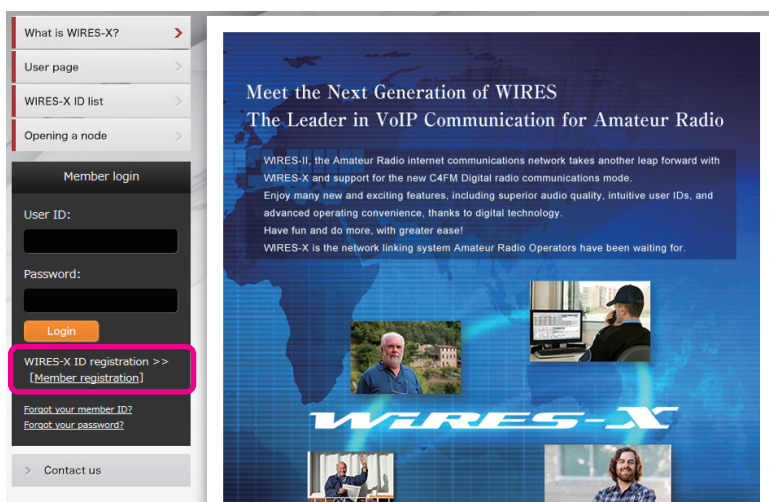


When the Internet line speed is low or unstable, the sound may be interrupted or the connection of the WIRES-X connection may become unstable.

Preparation

① User registration (acquire an ID number)

1. Access the WIRES-X website (<https://www.yaesu.com/jp/en/wires-x/index.php>).



2. Click [**Member Registration**] on the left side of the screen.
The “**Member registration**” page opens.
3. On the “**Member registration**” page, enter the e-mail address to be used for registration and click the [**Send**] button.
You will promptly receive an e-mail with an URL address to the website for registration.
4. Click the URL address of an e-mail to open the website.
5. When “**WIRES-X Server End-User License Agreement**” is displayed, check “**I agree to the WIRES-X server license agreement**”, then click [**Agree and proceed**].
6. Fill in all the fields on the “**Member registration**” page and send it.
In the “**HRI-200 Serial Number / RADIO ID**” field, enter the “**RADIO ID**” of the transceiver used for the node station (RADIO ID: 5-digit alphanumeric ID unique to the transceiver).

The transceiver's RADIO ID is a combination of five letters and numbers. Since the RADIO ID is distinguished between uppercase and lowercase letters of the alphabet, please input the RADIO ID displayed on the screen exactly as it is.

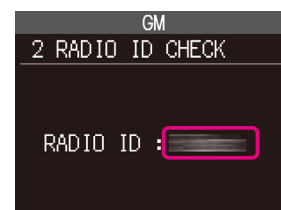


If it is difficult to determine the Radio ID, please enter the **RADIO ID** and also enter the **Transceiver's Serial Number** in the “**comment**” field at the bottom of the WIRES-X registration form screen so that registration can be completed without delay.

The “**RADIO ID**” of the transceiver may be displayed using the following procedure:

• FT5DR/DE or FT3DE/DE

- (1) Press and hold the [**F MENU**] key (FT5D) or the [**DISP**] key (FT3D) to open the setup menu.
- (2) Touch [**GM**].
- (3) Touch [**2 RADIO ID CHECK**].
The RADIO ID is displayed.



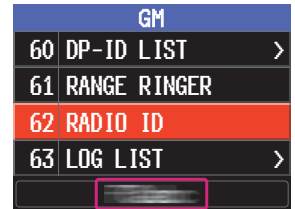
- **FT2DR/DE**

- (1) Press and hold the **[DISP]** key to open the setup menu.
- (2) Touch **[GM]**.
- (3) Touch **[2 RADIO ID CHECK]**.
The RADIO ID is displayed.



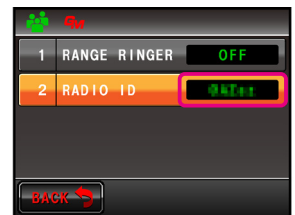
- **FTM-500DR/DE**

- (1) Press and hold the **FUNC** knob to open the setup menu.
- (2) Rotate the **DIAL** knob to select “**62 RADIO ID**”.
The RADIO ID is displayed at the bottom of the screen.



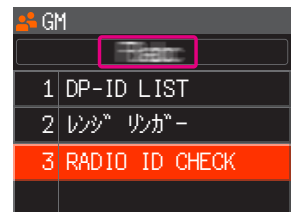
- **FTM-400XDR/DE or FTM-400DR/DE**

- (1) Press and hold the **[DISP(SETUP)]** key to open the setup menu.
- (2) Touch **[GM]**.
- (3) Touch **[3 RADIO ID CHECK]**.
The RADIO ID is displayed.



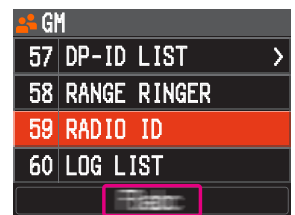
- **FTM-300DR/DE**

- (1) Press and hold the **[F(SETUP)]** key to open the setup menu.
- (2) Rotate the **DIAL** knob to select “**GM**” and then press the **DIAL** knob.
- (3) Rotate the **DIAL** knob to select “**3 RADIO ID CHECK**”.
The RADIO ID is displayed at the top of the screen.



- **FTM-200DR/DE**

- (1) Press and hold the **[F MENU]** key to open the setup menu.
- (2) Rotate the **DIAL** knob to select “**59 RADIO ID**”.
The RADIO ID is displayed at the bottom of the screen.



- **FTM-100DR/DE**

- (1) Press and hold the **[DISP(SETUP)]** key to open the setup menu.
- (2) Rotate the **DIAL** knob to select “**6 GM**” and then press the **[DISP(SETUP)]** key.
- (3) Rotate the **DIAL** knob to select “**4 RADIO ID CHECK**” and then press the **[DISP(SETUP)]** key.
The RADIO ID is displayed.



7. When registration is completed, an e-mail with the Node ID and the Room ID will be sent to the e-mail address.
Member registration is completed.



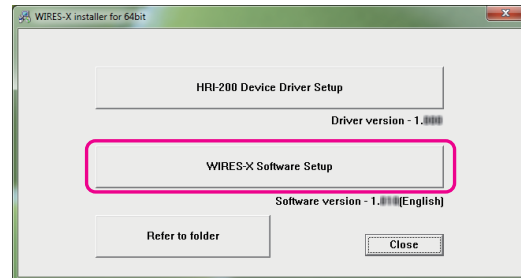
Completion of registration usually takes 2 to 3 business days.

② Install latest WIRES-X software to the PC



- This is not necessary if the latest WIRES-X software (Ver. 1.550 or higher) is already installed on the PC to be used.
- The latest WIRES-X software must also be installed on the transceiver that is establishing the connected room or the directly connected node station. (When WIRES-X software with Ver. 1.400 or higher is not installed, you cannot connect to a portable node station.)

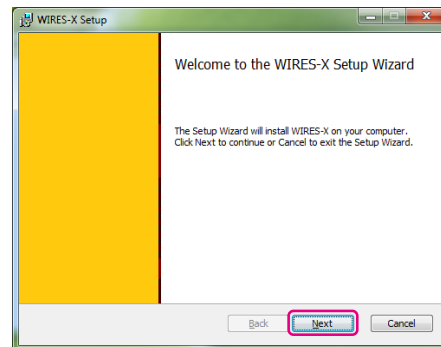
1. User login to the WIRES-X web site. Download and unzip the “wx****en.zip” file of the latest WIRES-X software (Ver.1.550 or higher).
2. Execute the “**Install.exe**” file in the unzipped folder. The “WIRES-X Installer” window will appear.
3. Click [**WIRES-X Software Setup**].



The “**Welcome to the WIRES-X Setup Wizard**” window will appear.

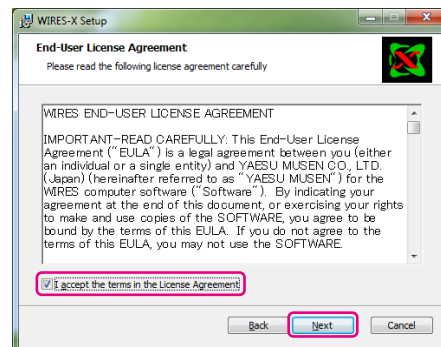
4. Click [**Next**].

The “**License**” window will appear.



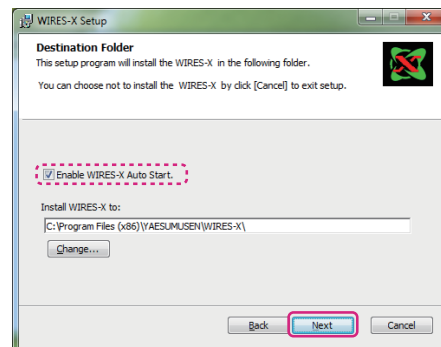
5. Put a check-mark in the “**I accept the terms in the License Agreement**” check box, then click [**Next**].

The “**Destination Folder**” window will appear.



6. Confirm the destination where the WIRES-X software will install and click [**Next**].

The “**Ready to install WIRES-X**” window will appear.

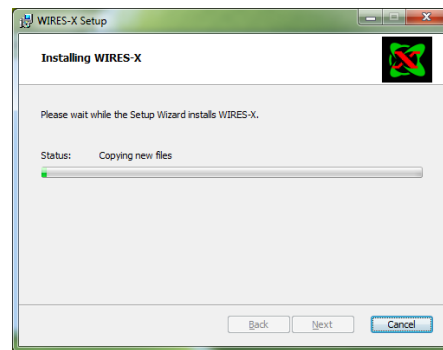
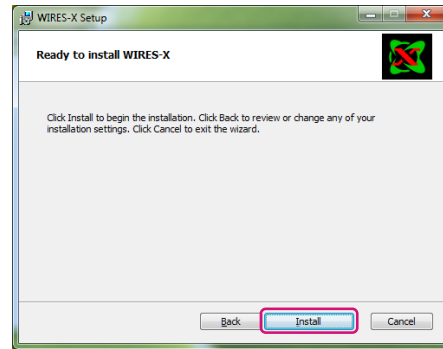


If a check-mark is placed in the “**Enable WIRES-X Auto Start.**” check box, the WIRES-X software will run automatically when Windows starts. Even if the WIRES-X software is terminated for some reason, it will reboot automatically.

7. Click [**Install**].

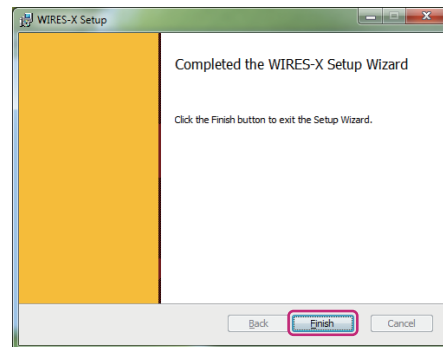
Software installation will start.

When installation completes, the “**Completed the WIRES-X Setup Wizard**” window will appear.

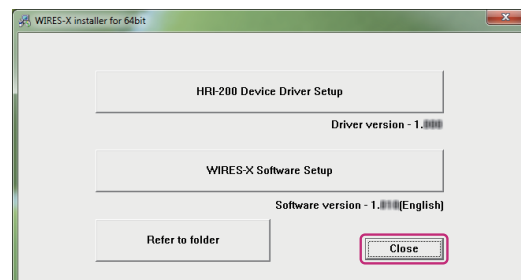


8. Click [**Finish**].

When WIRES-X software installation has been completed properly, the [**Wires-X**] icon will appear on the Windows desktop.



9. Click [**Close**] in the “**WIRES-X installer**” windows
Installation of the WIRES-X software is complete.



③ Install the USB driver for the PC connection cable

1. Download the SCU-58/SCU-57/SCU-40/SCU-39 USB driver from YAESU website (<http://www.yaesu.com/>).
2. Unzip the downloaded file and copy all the files to the desired folder.
3. Refer to the “**Driver Installation Manual**” PDF file in the folder and install the USB driver on the PC.

④ Update the firmware of the transceiver



This procedure is not necessary if the firmware of the transceiver used for the Portable Digital Node station is the latest version already posted on YAESU website.

1. To check the firmware version of the transceiver, use the following procedure:

□ FT5DR/DE

- (1) Press and hold the **[F MENU]** key to display “SETUP MENU”, then touch **[DISPLAY]**.
- (2) Rotate the **DIAL** knob, then touch **[10 SOFTWARE VERSION]**.
The firmware version of “Main” and “Sub”, “DSP” will be displayed.

□ FT3DR/DE

- (1) Press and hold the **[DISP]** key to display “SETUP MENU”, then touch **[DISPLAY]**.
- (2) Rotate the **DIAL** knob, then touch **[9 SOFTWARE VERSION]**.
The firmware version of “Main” and “Sub”, “DSP” will be displayed.

□ FT2DR/DE

- (1) Press and hold the **[DISP]** key to display “SETUP MENU”, then touch **[DISPLAY]**.
- (2) Rotate the **DIAL** knob, then touch **[11 SOFTWARE VERSION]**.
The firmware version of “Main” and “Sub”, “DSP” will be displayed.

□ FTM-500DR/DE

- (1) Press and hold the **FUNC** knob to display “SETUP MENU”.
- (2) Rotate the **SUB DIAL** knob and the **FUNC** knob to select **[126 SOFTWARE VERSION]**, then press the **FUNC** knob.
The firmware version of “Main” and “Sub”, “DSP” will be displayed.

□ FTM-400XDR/XDE or FTM-400DR/DE

- (1) Press and hold the **[DISP(SETUP)]** key to display “SETUP MENU”.
- (2) Touch **[RESET/CLONE]**.
The firmware version of “MAIN” will be displayed on the top of the screen.
- (3) Touch **[BACK]**.
- (4) Touch **[TX/RX]**.
- (5) Touch **[DIGITAL]**.
- (6) Rotate the **DIAL** knob to select **[5 DSP VERSION]**.
The “DSP” firmware version will be displayed to the right of **[5 DSP VERSION]**.

□ FTM-300DR/DE

- (1) Press and hold the **[F(SETUP)]** key to display “SETUP MENU”.
- (2) Rotate the **DIAL** knob to select “**DISPLAY**”, then press the **[F(SETUP)]** key.
- (3) Rotate the **DIAL** knob to select **[5 SOFTWARE VERSION]**, then press the **DIAL** knob.
The firmware version of “Main” and “Sub”, “DSP” will be displayed.

□ FTM-200DR/DE

- (1) Press and hold the **[F MENU]** key to display “SETUP MENU”.
- (2) Rotate the **DIAL** knob to select **[123 SOFTWARE VERSION]**, then press the **DIAL** knob.
The firmware version of “Main” and “Sub”, “DSP” will be displayed.

□ FTM-100DR/DE

- (1) Press and hold the **[DISP(SETUP)]** key to display “SETUP MENU”.
- (2) Rotate the **DIAL** knob to select “**13 RST/CLONE**”.
- (3) Press the **[DISP(SETUP)]** key.
- (4) Rotate the **DIAL** knob to select **[8 SOFTWARE VERSION]**, then press the **[DISP(SETUP)]** key.
The firmware version of “MAIN CPU” and “PANEL CPU”, “DSP CPU” will be displayed.



For details on checking the firmware version of the transceiver other than the above, refer to the owner's manual of each transceiver.

2. If the firmware version of the transceiver is the latest firmware as indicated on YAESU website (<http://www.yaesu.com/>), update is not necessary.

Proceed to “⑤ Connect the transceiver and the PC” (page 12).

- Download the latest firmware from YAESU website (<http://www.yaesu.com/>).
- Unzip the downloaded file and copy all the files to the desired folder.
- Refer to the “**Firmware Update Manual**” PDF file in the folder and update the firmware of the transceiver.



Be sure to use the “**Supplied USB cable**” for the FT5D, FT3D, FT2D, FTM-500D, FTM-300D or the FTM-200D firmware update. The PC connection cable SCU-56, SCU-55, SCU-20 or SCU-19 cannot be used for the FT5D, FT3D, FTM-500D, FTM-300D or the FTM-200D firmware update.

⑤ Connect the transceiver and the PC



Do not connect the connection cable to the PC before the installation of the USB device driver is completed. The wrong device driver may be installed and it may not operate correctly.



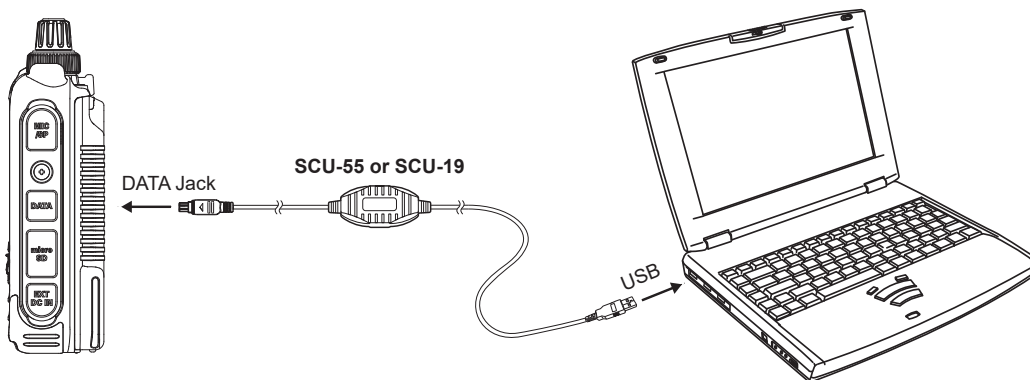
To communicate with an analog FM station, refer to “**Communicating with digital or analog FM mode (Portable HRI Mode)**” (page 13) and connect the transceiver and the PC.

Communicating only with C4FM digital mode (Portable Digital Node Mode)

FT5DR/DE, FT3DR/DE or FT2DR/DE

- Refer to the below figure and connect the PC connection cable SCU-55 or SCU-19.
(The SCU-55 or SCU-19 is included in the optional SCU-57 kit or SCU-39 kit.)

*It is not necessary to connect the microphone / speaker terminal.



- To prevent RF interference, keep the antenna of the transceiver as far away from the connecting cables and PC as possible.
- It is recommended to set the transmit output power of the transceiver as low as possible for the desired communication.

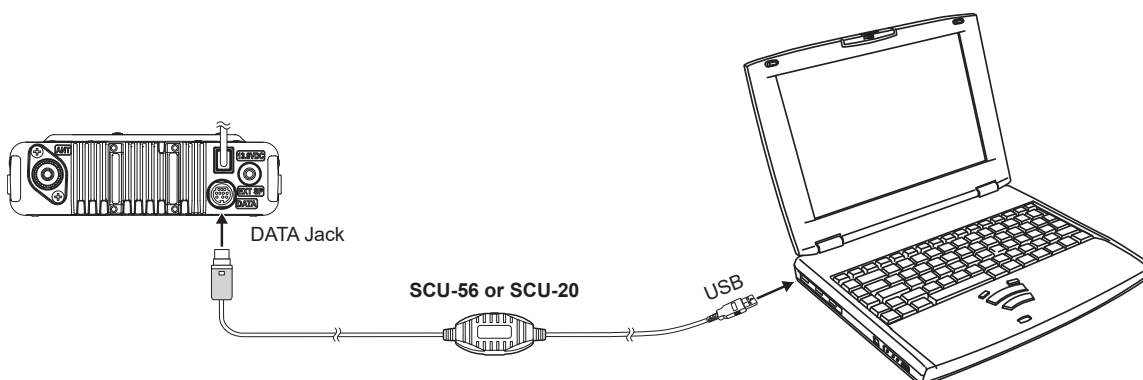
The connection is complete.

FTM-500DR/DE, FTM-400XDR/XDE/DR/DE, FTM-300DR/DE, FTM-200DR/DE and FTM-100DR/DE

- Refer to the below figure and connect the PC connection cable SCU-56 or SCU-20.

(The SCU-56 or SCU-20 is included in the optional SCU-58 kit or SCU-40 kit.)*

*The SCU-56 or SCU-20 PC Connection Cable is supplied with the FTM-400XDR/XDE/DR/DE / FTM-100DR/DE.



The connection is complete.

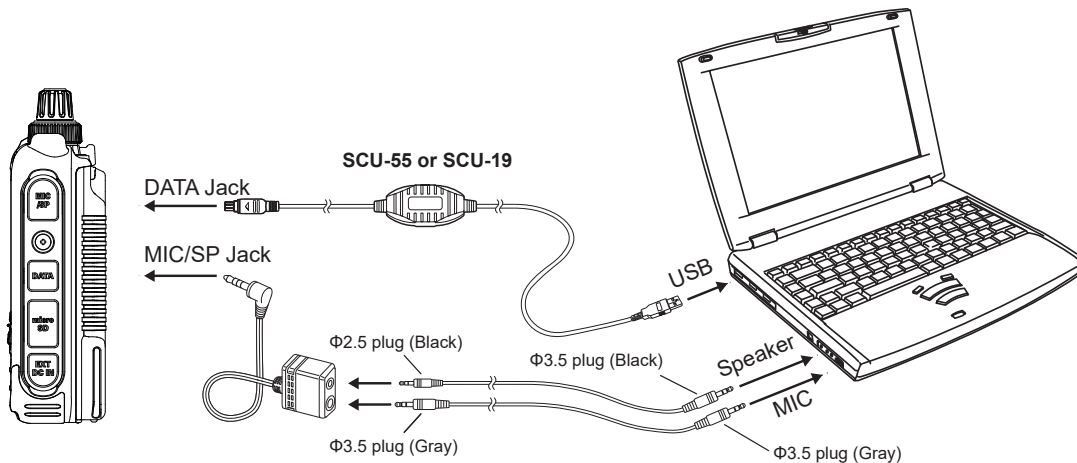
Communicating with digital or analog FM mode (Portable HRI Mode)

□ FT5DR/DE, FT3DR/DE or FT2DR/DE

Since the cable connection for the FT5D/FT3D/FT2D transceiver differs between Access Point and Direct Operation, please refer to the following and make the connections according to the mode to be used.

《When operating in Access Point》

1. For the WIRES-X Node mode connection, use the SCU-55 or SCU-19 USB Connection Cable, the CT-44 adapter and two audio cables that are supplied in the SCU-57 or SCU-39 Connection Kit (sold separately) as shown in the figure.



- To prevent RF interference, keep the antenna of the transceiver as far away from the connecting cables and PC as possible.
- It is recommended to set the transmit output power of the transceiver as low as possible for the desired communication.

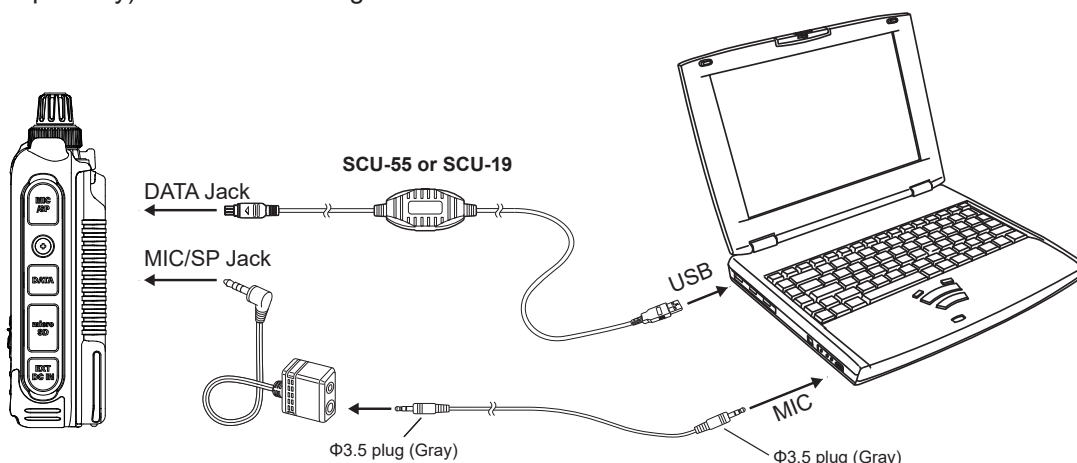
The connection is complete.



After completing “**Initial Setting (setting is required only once at the beginning)**” (page 15), the volume level of the microphone and PC speaker must be set by referring to “**Adjusting Audio Level in the Access Point (Portable HRI Mode)**” (page 69).

《When operating in Direct Operation》

1. For the WIRES-X Direct mode connection, use the SCU-55 or SCU-19 USB Connection Cable, the CT-44 adapter and one of the audio cables that are supplied in the SCU-57 or SCU-39 Connection Kit (sold separately) as shown in the figure.



The connection is complete.



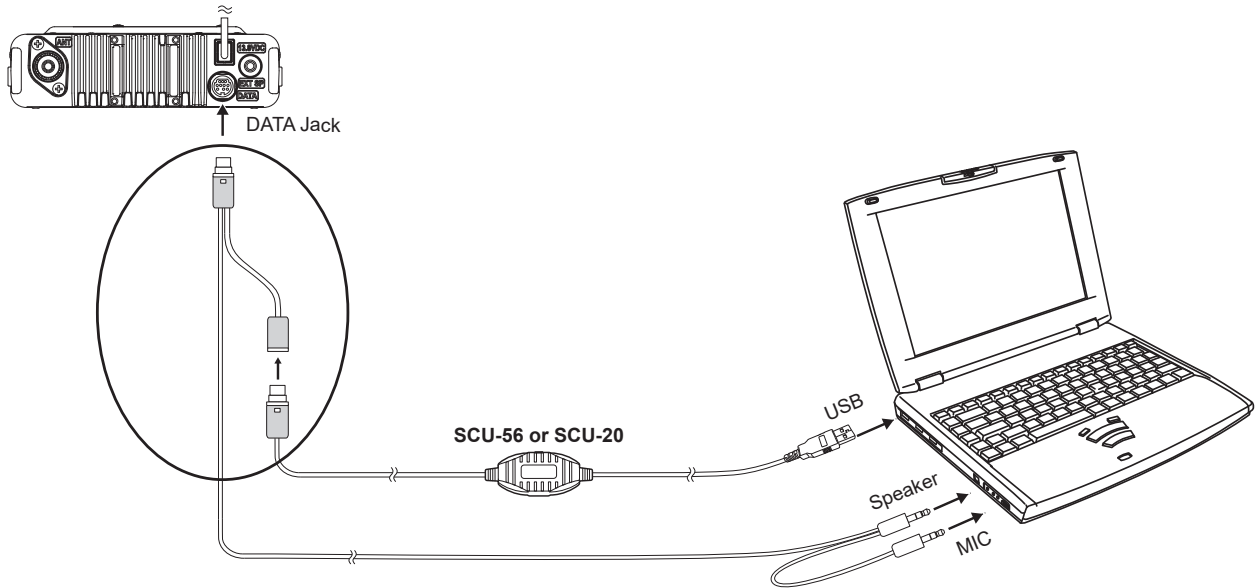
In “**Direct Operation**” of Portable HRI Mode with FT5D/FT3D/FT2D transceiver, the audio from the other station is heard only from the PC speaker. After completing “**Initial Setting (setting is required only once at the beginning)**” (page 15), the volume level of the microphone and PC speaker must be set by referring to “**Adjusting Audio Level in the Direct Operation (Portable HRI Mode)**” (page 71).

To adjust the receive volume level, turn the **VOL** knob of the FT5D/FT3D/FT2D transceiver, or adjust the PC speaker volume.

□ **FTM-500DR/DE, FTM-400XDR/XDE/DR/DE, FTM-300DR/DE, FTM-200DR/DE or FTM-100DR/DE**

When using FTM-500DR/DE, FTM-400XD/D, FTM-300DR/DE, FTM-200DR/DE or FTM-100DR/DE, the cable connection with the personal computer is the same for both Access Point and Direct Operation.

1. Refer to the below figure and connect the SCU-56 or SCU-20 PC connection cable that is supplied with the separately sold SCU-58 or SCU-40 WIRES-X connection cable kit, and the audio cable.



The connection is complete.



When communicating via the Internet in “**Portable HRI Mode**”, refer to “**Adjusting Audio Level in the Access Point (Portable HRI Mode)**” (page 69) or “**Adjusting Audio Level in the Direct Operation (Portable HRI Mode)**” (page 71) and adjust the audio level of the computer.

Initial Setting (setting is required only once at the beginning)

Start the transceiver



If the initial setting is completed in either "Portable Digital Node Mode" or "Portable HRI Mode", operation can be switched between the two modes. It is recommended that the initial setup be completed in the same mode the PDN function will actually be operated.

◎ Portable Digital Node mode (Supports linking to the Internet only in C4FM digital mode)

FT5DR/DE

1. Press and hold the [GM/X] key and [BAND] key and the [POWER] switch to turn the transceiver ON.
"WIRES-X PDN" is displayed on the LCD screen.

FT3DR/DE

1. Press and hold the [X] key, [BAND] key and the [POWER] switch to turn the transceiver ON.
"WIRES-X PDN" is displayed on the LCD screen.

FT2DR/DE

1. Press and hold the [X] key, [BAND] key and the [POWER] switch to turn the transceiver ON.
"PDN" is displayed on the LCD screen.

FTM-500DR/DE, FTM-300DR/DE or FTM-200DR/DE

1. Press and hold the [D X] key and the [POWER] switch to turn the transceiver ON.
"WIRES-X PDN" is displayed on the LCD screen.

FTM-400XDR/XDE or FTM-400DR/DE

1. Press and hold the [D X] key and the [POWER] switch to turn the transceiver ON.
"PDN" is displayed on the LCD screen.

FTM-100DR/DE

1. Press and hold the [D X] key and the [POWER] switch to turn the transceiver ON.
"PDN" is displayed on the LCD screen.

◎ Portable HRI Mode (Supports Internet communication in digital mode and analog mode)

FT5DR/DE

1. Press and hold the [GM/X] key, [F MENU] key and the [POWER] switch to turn the transceiver ON.
"WIRES-X" is displayed on the LCD screen.

FT3DR/DE

1. Press and hold the [X] key, [BACK] key and the [POWER] switch to turn the transceiver ON.
"WIRES-X" is displayed on the LCD screen.

FT2DR/DE

1. Press and hold the [X] key, [BACK] key and the [POWER] switch to turn the transceiver ON.
"WIRES-X" is displayed on the LCD screen.

FTM-500DR/DE, FTM-300DR/DE or FTM-200DR/DE

1. Press and hold the [D X] key, [GM] key and the [POWER] switch to turn the transceiver ON.
"YAESU" logo and "WIRES-X" logo is displayed on the LCD screen.

When connected to a PC and communicating with the WIRES-X software, "WIRES-X NODE" is displayed in the center of the screen.

FTM-400XDR/XDE or FTM-400DR/DE

1. Press and hold the [D X] key, [GM] key and the [POWER] switch to turn the transceiver ON.
"YAESU" logo and "WIRES-X" logo is displayed on the LCD screen.

When connected to a PC and communicating with the WIRES-X software, "WIRES-X NODE" is displayed in the center of the screen.

FTM-100DR/DE

1. Press and hold the [D X] key, [GM] key and the [POWER] switch to turn the transceiver ON.
"WIRES-X" logo is displayed on the LCD screen.



- Repeating the above operation will return the transceiver to the normal mode.
- To switch between "Portable Digital Node Mode" and "Portable HRI Mode", start with the normal mode first and then perform the above operation.

Starting the WIRES-X software

1. Double-click the **[Wiress-X]** icon on the PC desktop.
 - Setting the Internet access security (Only when Windows Security Alert screen appears)

If the Windows Security Alert window appears when starting WIRES-X software, click **[Allow access]** to allow Internet access from the WIRES-X software.



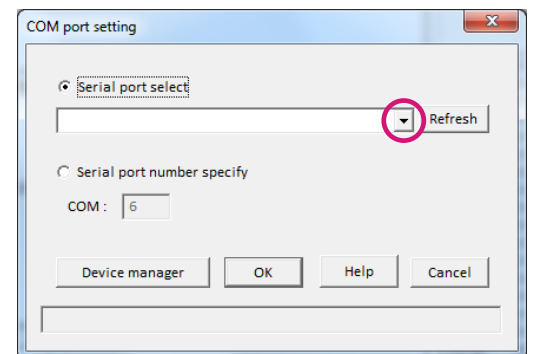
Communication port setting

When starting the WIRES-X software for the first time or when the communication port is changed, the **"COM port setting"** window will appear. Set the communication port with the transceiver connected to the PC.

1. Connect the transceiver to the PC using the SCU-55, SCU-56, SCU-19 or SCU-20 PC connection cable. For details on the connection procedure, refer to "⑤ Connect the transceiver and the PC" (page 12).
2. Click **[▼]** in the **"Serial Port Selection"** column and click the COM port (displayed as **"Prolific USB-to-Serial Comm Port (COMX)"**) connected to the transceiver.



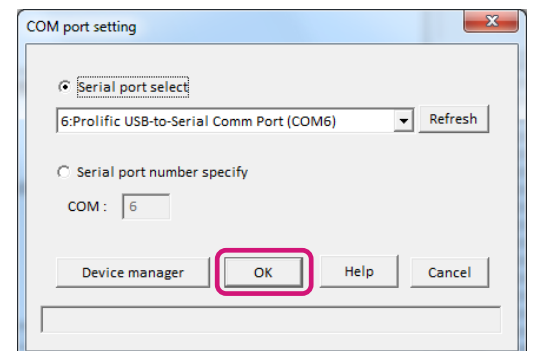
- A communication port may also be selected by clicking "Serial port number specify" and entering the COM port number directly.
- Click the **[Device manager]** to open the Windows Device Manager.



3. Click **[OK]**.



The communication port may be changed from the **[File (F)]** menu - **[Communication port]** of WIRES-X software.



Authenticate (activate) the WIRES-X server

If the WIRES-X server authentication (activation) has not been completed on the personal computer to be used, the "WIRES ID Activation" screen opens automatically.

1. Enter the "Node ID" and "Room ID" (both are 5-digit numbers) ②.



- Be sure to connect the transceiver started in "Portable digital node mode" or "Portable HRI mode" to a PC. Node ID and Room ID cannot be entered when the RADIO ID is not automatically entered in the Serial Number box.
- "RADIO ID" of the transceiver connected to the PC is automatically displayed in the serial number box ①. If "RADIO ID" is not displayed, check the connection between the transceiver and the PC again.
- Remove the HRI-200 interface unit from the PC when using the Portable Digital Node function.
- The Node ID and the Room ID are described in the e-mail received when the user registration is completed.

① The Radio ID is automatically entered when the transceiver is started in "Portable digital node mode" or "Portable HRI mode" is connected to the PC.

② Enter the 5 digits of the "WIRES-X ID Number" and "WIRES-X ROOM ID Number" that are included in the WIRES-X new registration email.

The "WIRES ID Activation" dialog box contains the following fields and buttons:

Serial No.	DTMF ID	User ID	CallSign
<input type="text"/>	Node : <input type="text"/>	<input type="text"/>	<input type="text"/>
	Room : <input type="text"/>		

City: State: Country:

Input DTMF-ID and press [ID Entry] button.

Buttons: Port check, ID Entry, Cancel, Help

③ When the Serial No. and DTMF ID fields are filled, you can click the ID Entry button.

2. Click [ID Entry] ③.

When activation is completed, information on registration is automatically displayed for "User ID", "Call Sign", "City", "State", and "Country".

3. Click [OK].

The information of the User ID is saved on the computer and "Settings" window will appear.

On this screen the settings such as "Comment" of your station may be added to display in the ID list.

The "Settings" dialog box shows the "WIRES ID information" section with the following fields:

Serial No.	DTMF ID	CallSign	User ID
<input type="text"/>	<input type="text"/>	<input type="text"/>	<input type="text"/> <input type="button" value="User ID change"/>

City: State: Country:

Comment:

Confidential ID

QSL exchange (SIZE QVGA 320x240bmp): ...

Get info. text (MAX.200 characters):

Buttons: OK, Cancel, Help

4. Click [OK].

The "Settings" window closes and the "Main Screen" will appear.

When using it in "Direct Operation", "Transceiver settings (Access Point only)" (page 18) is not necessary, so the initial setting is completed. Proceed to "Basic Operation" (page 20).

Transceiver settings (Access Point only)

When using “**Access Point**” of Portable HRI Mode, set the operating frequency and parameters etc. of the transceiver by using the following procedure:

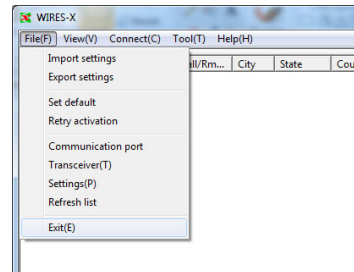
It is not necessary to make these settings when using “**Direct Operation**”.



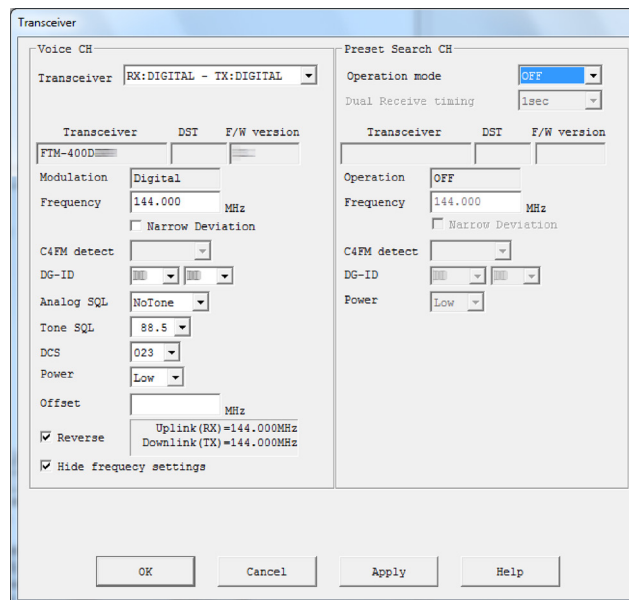
When using “**Access Point**” of Portable Digital Node Mode, only the “**Hide frequency settings**” item can be set using the following procedure. When the transceiver is connected and operation of the “**Node Mode**” is started, the other items settings are transferred from the transceiver and can only be confirmed.

1. From the “**File**” menu, click “**Transceiver**”.

The “**Transceiver**” window will appear.



2. Set the operating frequency of the Portable Digital Node Station.



Frequency: Enter the operating frequency.

Narrow

Deviation: Select if using narrow deviation operation (Default: Unchecked).

DG-ID: Select the DG-ID (Digital Group ID) number 00 to 99 (default setting: 00)

When the DG-ID number is set to “00”, the node becomes an open node. The subcode on the right can be set from “00” to “26”.

When DG-ID number is set to “00” and subcode is set to “00”, C4FM digital signals of all DG-ID numbers are relayed.

When DG-ID number is set to “00” and subcode is set from “01” to “26”, C4FM digital signals without the matching subcode will not be relayed. The C4FM digital transceiver accessing the WIREX-X DG-ID “**AUTO**” node station is automatically set to the same subcode and can communicate while accessing it.



- By setting the DG-ID number to “00”, the station becomes an open node station, and can be connected from all transceivers with the WIREX-X DG-ID setting “**AUTO**”. When using a node station in a restricted group, set the DG-ID to a number “01” to “99”, and then set all the group transceivers to the same DG-ID number.
- The DG-ID subcode cannot be used or set in Portable Digital Node mode.

- Power:** Set the transmission power of the transceiver.
- Offset:** For split operation, input the offset value of the frequency to be used for reception (uplink) in MHz for the “operating frequency” that the node station uses for transmission (downlink). Leave blank if split operation (Default: blank), is not wanted.
- Reverse:** When unchecked, reception (uplink) at the operating frequency and transmission (downlink) at the offset frequency are made.
- Hide frequency settings:** When remove the check mark, the operation information (frequency and squelch setting) will be displayed in the node list. It takes about 10 minutes for the setting to be reflected in the node list, (Default: Checked).



This is the only item that may be set when using “Access Point” in the Portable Digital Node Mode.

3. Click the [OK].

The “**Transceiver**” window closes and the “**Main Screen**” will appear.



When a microphone is connected or built in the PC, there may be cases where the sound around the PC is relayed, be sure to remove the microphone or mute the microphone with the setting of the audio device of the PC.



When communicating via the Internet in “**Portable HRI Mode**”, refer to “**Adjusting Audio Level in the Access Point (Portable HRI Mode)**” (page 69) or “**Adjusting Audio Level in the Direct Operation (Portable HRI Mode)**” (page 71) and adjust the audio level of the computer.

The Initial setting is complete.

Basic Operation

Refer to “Using the Portable Digital Node Mode” or “Using the Portable HRI Mode” (page 60) according to the mode to be used.

Using the Portable Digital Node Mode

Connecting the transceiver and the PC

Refer to “Communicating only with C4FM digital mode (Portable Digital Node Mode)” (page 12) and connect the transceiver to the PC.

Starting the WIRES-X software

1. Double click the [Wires-X] icon on the desktop of the computer screen.
The main screen of WIRES-X software is displayed.
For details on the main screen, refer to “WIRES-X Software Main Screen” (page 66).

Starting the transceiver in special mode

FT5DR/DE

1. Press and hold the [GM/X] key, [BAND] key and the [POWER] switch to turn the transceiver **ON**.
“WIRES-X PDN” is displayed on the LCD screen.
2. Press the [A/B] key to select “Access Point” or “Direct Operation”.
Depending on the operation mode chosen, the frequency display will show as follows:
Access Point: “(Frequency display)”
Direct Operation: “DIRECT”

FT3DR/DE

1. Press and hold the [X] key, [BAND] key and the [POWER] switch to turn the transceiver **ON**.
“WIRES-X PDN” is displayed on the LCD screen.
2. Press the [A/B] key to select “Access Point” or “Direct Operation”.
Depending on the operation mode chosen, the frequency display will show as follows:
Access Point: “(Frequency display)”
Direct Operation: “DIRECT”

FT2DR/DE

1. Press and hold the [X] key, [BAND] key and the [POWER] switch to turn the transceiver **ON**.
“PDN” is displayed on the LCD screen.
2. Press the [A/B] key to select “Access Point” or “Direct Operation”.
Depending on the operation mode chosen, the frequency display will show as follows:
Access Point: “(Frequency display)”
Direct Operation: “DIRECT”

FTM-500DR/DE

1. Press and hold the [D X] key and the [POWER] switch to turn the transceiver **ON**.
“WIRES-X PDN” is displayed on the LCD screen.
2. Press the **↕** key to select “Access Point” or “Direct Operation”.
Depending on the operation mode chosen, the display will show as follows:
Access Point: “(Frequency display)”
Direct Operation: “DIRECT”

FTM-400XDR/XDE or FTM-400DR/DE

1. Press and hold the [D X] key and the [POWER] switch to turn the transceiver **ON**.
“PDN” is displayed on the LCD screen.
2. Press the B-Band **DIAL** knob (Lower) to select “Access Point” or “Direct Operation”.
Depending on the operation mode chosen, the A band frequency display will show as follows:
Access Point: “(Frequency display)”
Direct Operation: “DIRECT”

FTM-300DR/DE or FTM-200DR/DE

1. Press and hold the [D X] key and the [POWER] switch to turn the transceiver **ON**.
“WIRES-X PDN” is displayed on the LCD screen.
 2. Press the [A/B] key to select “**Access Point**” or “**Direct Operation**”.
- Depending on the operation mode chosen, the display will show as follows:

Access Point: “(Frequency display)”
Direct Operation: “DIRECT”

FTM-100DR/DE

1. Press and hold the [D X] key and the [POWER] switch to turn the transceiver **ON**.
“PDN” is displayed on the LCD screen.
 2. Press the [A/B](DW) key to select “**Access Point**” or “**Direct Operation**”.
- Depending on the operation mode chosen, the sub frequency display will show as follows:

Access Point: “(Frequency display)”
Direct Operation: “DIRECT”



- To return the transceiver to the normal mode, repeat procedure 1 above.
 - To switch between “**Portable Digital Node Mode**” and “**Portable HRI Mode**”, start with the normal mode first and then perform the above operation.
 - The portable station transceiver cannot use the News Station feature or the GM feature.
-

Setting the transceiver (Access Point only)

When using the “**Access Point**”, it is necessary to set the node station transceiver parameters, such as operating frequency and DG-ID number on the portable node station transceiver.

When using the “**Direct Operation**”, it is not necessary to set the frequency and parameters on the transceiver, just proceed to “**Start operation of Portable Node**” (page 30).

1. To set the operating frequency:

Use the transceiver **DIAL** knob, the Numeric keypad input screen, or the memory channel to set the operating frequency.



In the “**Transceiver Setting Screen**”, the portable Access Point function is not working. You may communicate normally with C4FM digital mode (DN mode only) with the transceiver.

□ FT5D

On the frequency setting screen, you can set and operate the following with the transceivers key and **DIAL** knob settings.

Function	Key or Dial
Switches between the Access Point and the Direct Operation	Press the A/B key
Starts operation for the Portable Digital Node	Press and hold the GM/X key
Sets the operation frequency	Rotate the DIAL knob or press the Numeric keypad input screen
Displays the Function Menu Screen	Press the F MENU key
Switches between the VFO mode and the Memory Channel mode	Press the V/M ● key
Moves operation to the next-highest frequency band	Press the BAND key
Sets the transmit and receive DG-ID number	Touch [DG-ID] on the Function Menu Screen
Selects the Transmission Power Level	Touch [TXPWR] on the Function Menu Screen
TX/BUSY LED turn OFF/ON	Press and hold the PMG ● key
Enters the Set mode*	Press and hold the F MENU key
Enters the BACKTRACK screen	Touch [DISP] on the Function Menu Screen
Registering to Memory Channel	Press and hold the V/M ● key
Recalls the “HOME” channel	Touch [HOME] on the Function Menu Screen
Squelch OFF	While MONI key is pressed
Adjusts the squelch level	Press the SQL key, then rotate the DIAL knob
Reverses the transmit and receive frequencies	Touch [REV] on the Function Menu Screen
Switches Busy detection between “Noise squelch” and “DG-ID number match”.	Press and hold the A/B key

*Some setting items in the set mode are automatically set for the Portable Digital Node function, so these settings cannot be used.

□ FT3D or FT2D

On the frequency setting screen, you can set and operate the following with the transceivers key and DIAL knob settings.

Function	Key or Dial
Switches between the Access Point and the Direct Operation	Press the A/B key
Starts operation for the Portable Digital Node	Press the X key
Sets the operation frequency	Rotate the DIAL knob or press the Numeric keypad input screen
Switches between the VFO mode and the Memory Channel mode	Press the V/M key
Moves operation to the next-highest frequency band	Press the BAND key
Sets the transmit and receive DG-ID number	Press and hold the GM key
Displays the Function Menu Screen	Touch [F MW]
Selects the Transmission Power Level	Touch [TXPWR] on the Function Menu Screen
TX/BUSY LED turn OFF/ON	V/M key (Press and hold)
Enters the Set mode*	Press and hold the DISP key
Enters the BACKTRACK screen	Press the DISP key
Registering to Memory Channel	Touch and hold [F MW]
Recalls the "HOME" channel	Touch [HOME] on the Function Menu Screen
Squelch OFF	While MONI key is pressed
Adjusts the squelch level	Press the SQL key, then rotate the VOL knob (FT3D) or the DIAL knob (FT2D)
Reverses the transmit and receive frequencies	Touch [REV] on the Function Menu Screen
Switches Busy detection between "Noise squelch" and "DG-ID number match".	Press and hold the A/B key

*Some setting items in the set mode are automatically set for the Portable Digital Node function, so these settings cannot be used.

□ FTM-500D

On the frequency setting screen, you can set and operate the following with the transceivers key and DIAL knob settings.

Function	Key or Dial
Switches between the Access Point and the Direct Operation	Press the ↕ key
Starts operation for the Portable Digital Node	Press the D X key or press the P3 key on the microphone (by default setting)
Sets the operation frequency	Rotate the DIAL knob or ten key on the microphone
Selects the operating band	Press the BAND key
Recalls the "HOME" channel	Press the P2 key on the microphone (by default setting)
Switches between the VFO mode and the Memory Channel mode	Press the V/M (MW) key
Registering to Memory Channel	Press and hold the V/M (MW) key
Displays the Function List Screen	Press the FUNC knob
Sets the transmit and receive DG-ID number	Press and hold the GM key
Selects the Transmission Power Level	Function List → [TXPWR] or press the P1 key ~ P4 key on the microphone* *Setting of "TX POWER" function is necessary for P1 ~ P4 keys in set mode.
Enters the Setup menu*	Press and hold the FUNC knob
Enters the BACKTRACK (COMPASS) screen	Press the DISP key
Squelch OFF	Press and the P1 key ~ P4 key on the microphone* *Setting of "SQL OFF" function is necessary for P1 ~ P4 keys in set mode.
Adjusts the squelch level	Press the MAIN Band VOL/SQL knob, then rotate the MAIN Band VOL/SQL knob
Reverses the transmit and receive frequencies	Press the P1 key ~ P4 key on the microphone* *Setting of "REVERSE" function is necessary for P1 ~ P4 keys in set mode.
Switches Busy detection between "Noise squelch" and "DG-ID number match".	Press and hold the ↕ key

*Some setting items in the set mode are automatically set for the Portable Digital Node function, so these settings cannot be used.

❑ FTM-400XD/D

On the frequency setting screen, you can set and operate the following with the transceivers key and DIAL knob settings.

Function	Key or Dial
Switches between the Access Point and the Direct Operation	Press the B-Band DIAL knob (Lower)
Starts operation for the Portable Digital Node	Press the D X key or press the P3 key on the microphone (by default setting)
Sets the operation frequency	Rotate the DIAL knob or press the numeric keypad input screen
Switches between the VFO mode and the Memory Channel mode	Touch [V/M] on the LCD screen
Sets the transmit and receive DG-ID number	Press and hold the GM key
Displays the Function Menu Screen	Press the F(MW) key
Selects the Transmission Power Level	Touch [TX PWR] in the Function Menu Screen or press the P4 key on the microphone (by default setting)
Enters the Set mode*	Press and hold the DISP key
Enters the BACKTRACK (COMPASS) screen	Press the DISP key
Registering to Memory Channel	Press and hold the F(MW) key
Recalls the "HOME" channel	Touch [HOME] in the Function Menu Screen or press the P2 key on the microphone (by default setting)
Squelch OFF	Press the P1 key on the microphone (by default setting)
Adjusts the squelch level	Touch [SQL] on the LCD screen, then rotate the A-Band DIAL knob (Upper)
Reverses the transmit and receive frequencies	Touch [REV] in the Function Menu Screen
Switches Busy detection between "Noise squelch" and "DG-ID number match".	Press and hold the B-Band DIAL knob (Lower)

*Some setting items in the set mode are automatically set for the Portable Digital Node function, so these settings cannot be used.

❑ FTM-300D or FTM-200D

On the frequency setting screen, you can set and operate the following with the transceivers key and DIAL knob settings.

Function	Key or Dial
Switches between the Access Point and the Direct Operation	Press the A/B key
Starts operation for the Portable Digital Node	Press the D X key or press the P3 key on the microphone (by default setting)
Sets the operation frequency	Rotate the DIAL knob or ten key on the microphone
Selects the operating band	Press the BAND key
Recalls the "HOME" channel	Press the P2 key on the microphone (by default setting)
Switches between the VFO mode and the Memory Channel mode	Press the V/M (MW) key
Registering to Memory Channel	Press and hold the V/M (MW) key
Displays the Function Menu Screen (FTM-300D) Displays the Function List Screen (FTM-200D)	Press the F SETUP key (FTM-300D), Press the F MENU key (FTM-200D)
Sets the transmit and receive DG-ID number	Press and hold the GM key
Selects the Transmission Power Level	Function Menu → [FUNCTION] → [TXPWR] (FTM-300D), Function List → [TXPWR] (FTM-200D), or press the P4 key on the microphone (by default setting)
Enters the Setup menu*	Press and hold the F SETUP key (FTM-300D), Press and hold the F MENU key (FTM-200D)
Enters the BACKTRACK (COMPASS) screen	Press the DISP key
Squelch OFF	Press and the P2 key ~ P4 key on the microphone* *Setting of "SQL OFF" function is necessary for P2 ~ P4 keys in set mode.
Adjusts the squelch level	Press the SQL key, then rotate the A-Band DIAL knob (FTM-300D) or the DIAL knob (FTM-200D)
Reverses the transmit and receive frequencies	Press and the P2 key ~ P4 key on the microphone* *Setting of "REVERSE" function is necessary for P2 ~ P4 keys in set mode.
Switches Busy detection between "Noise squelch" and "DG-ID number match".	Press and hold the A/B key

*Some setting items in the set mode are automatically set for the Portable Digital Node function, so these settings cannot be used.

❑ FTM-100D

On the frequency setting screen, you can set and operate the following with the transceivers key and DIAL knob settings.

Function	Key or Dial
Switches between the Access Point and the Direct Operation	Press the A/B(DW) key
Starts operation for the Portable Digital Node	Press the D X key or press the P3 key on the microphone (by default setting)
Sets the operation frequency	Rotate the DIAL knob
Selects the operating band	Press the BAND(MHz) key
Recalls the "HOME" channel	Press the P2 key on the microphone (by default setting)
Switches between the VFO mode and the Memory Channel mode	Press the V/M(MW) key
Registering to Memory Channel	Press and hold the V/M(MW) key
Sets the transmit and receive DG-ID number	Press and hold the GM key
Enters the Set mode*	Press and hold the DISP(SETUP) key
Enters the BACKTRACK (COMPASS) screen	Press the DISP(SETUP) key
Selects the Transmission Power Level	Press the TX PO key or press the P4 key on the microphone (by default setting)
Reverses the transmit and receive frequencies	Press and the P1 key ~ P4 key on the microphone* *Setting of "REVERSE" function is necessary for P1 ~ P4 keys in set mode.
Squelch OFF	Press the P1 key on the microphone (by default setting)
Adjusts the squelch level	Press the SQL(VOICE) key, then rotate the DIAL knob
Switches Busy detection between "Noise squelch" and "DG-ID number match".	Press and hold the A/B(DW) key

*Some setting items in the set mode are automatically set for the Portable Digital Node function, so these settings cannot be used.

2. Setting the transmit and receive DG-ID number.

This procedure is unnecessary if the transceiver is already set to the required transmit and receive DG-ID number.

Since the transmit and receive DG-ID number is "TX: 00" and "RX: 00", it operates as an open node and is accessible from all transceivers using C4FM digital mode.

When using a portable node station to be accessed only by the specific members, set the transmit and receive DG-ID to a number other than "00".

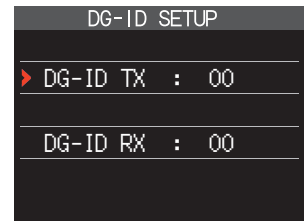
- In the Access Point, if the receive DG-ID is set to other "00", set the transmit DG-ID number to the same DG-ID number. Note that setting to a different number will not work properly.



- When setting the receive DG-ID number to "00" and then setting the transmission DG-ID number to anything other than "00", the audio of all received C4FM digital stations will be heard on the speaker, but for the transmission DG-ID Only the matched communication is relayed to the opposite station on the Internet.
- The DG-ID Subcode cannot be used or set in Portable Digital Node mode.

□ FT5D

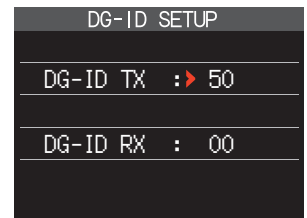
1. Press the [**F MENU**] key, and touch [**DG-ID**].
 - If [**DG-ID**] is not displayed, touch [**BACK ←**] to display [**DG-ID**] and then touch it.
 - The DG-ID SETUP screen is displayed on the LCD.



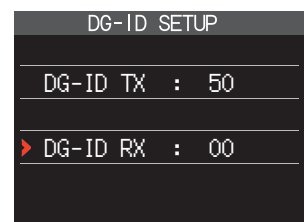
2. Press the [**F MENU**] key, then rotate the **DIAL** knob to set the transmit DG-ID (DG-ID TX).



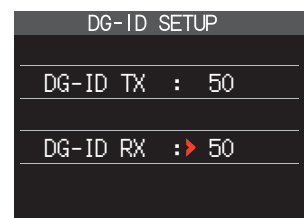
When setting the DG-ID number, pressing and holding the [**GM/X**] key will set the transmit and the receive DG-ID numbers to "00".



3. Press the [**F MENU**] key, then rotate the **DIAL** knob to select "**DG-ID RX**".



4. Press the [**F MENU**] key, then rotate the **DIAL** knob to set the receive DG-ID (DG-ID RX).

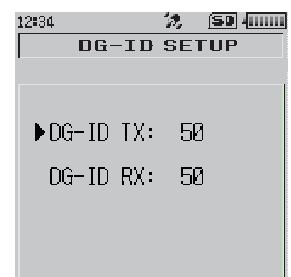


5. Press the [**BACK**] key or the PTT switch to save the setting and return to the normal operation.

The setting of the FT5D transceiver is complete.

□ FT3D/FT2D

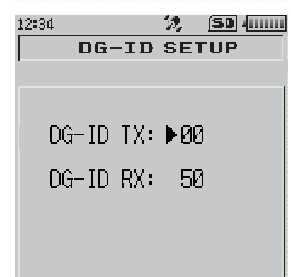
1. Press and hold the [**GM**] key.
The DG-ID SETUP screen is displayed on the LCD.



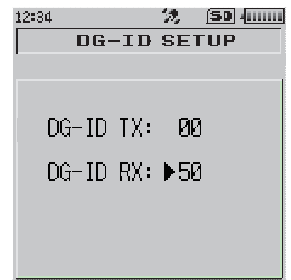
2. Press the [**GM**] key, then rotate the **DIAL** knob to set the transmit DG-ID number (DG-ID TX).



When setting the DG-ID number, pressing and holding the [**DISP**] (SETUP) key will set the transmit and the receive DG-ID numbers to "00".



3. Press the **[GM]** key, then rotate the **DIAL** knob to select "**DG-ID RX**".



4. Press the **[GM]** key, then rotate the **DIAL** knob to set the receive DG-ID (DG-ID RX).

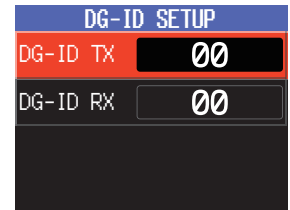


5. Press and hold the **[DISP]** key, to save the setting and return to normal operation.

The setting of the FT3D/FT2D transceiver is complete.

❑ FTM-500D

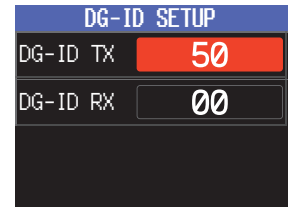
1. Press and hold the **[GM]** key.
The DG-ID number setting screen is displayed.



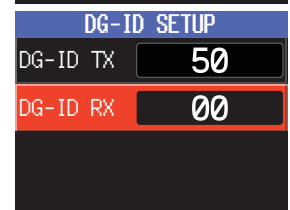
2. Press the **FUNC** knob, then rotate the **FUNC** knob to set the transmit DG-ID (DG-ID TX).



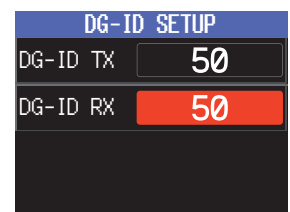
When setting the DG-ID number, pressing and holding the **FUNC** knob will set the transmit and the receive DG-ID numbers to "00".



3. Press the **FUNC** knob, then rotate the **FUNC** knob to set the "DG-ID RX".



4. Press the **FUNC** knob, then rotate the **FUNC** knob to set the receive DG-ID (DG-ID RX).



5. Press and hold the **[GM]** key to save the setting and return to normal operation.

The setting of the FTM-500D transceiver is complete.

❑ FTM-400XD/D

1. Press and hold the **[GM]** key.
The DG-ID SETUP screen is displayed on the LCD.



2. Touch **[DG-ID TX]**.
The numbers of the set value will turn orange in color.

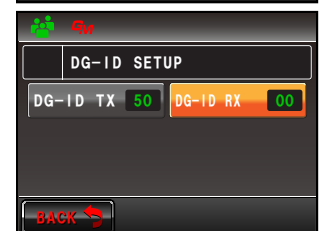
3. Rotate the **A-Band DIAL** knob (upper side) to set the transmit DG-ID.



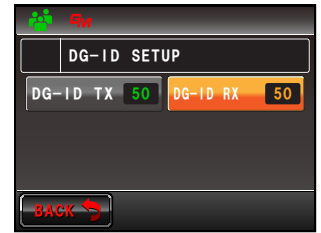
When setting the DG-ID number, pressing and holding the **[DISP]** (SETUP) key will set the transmit and the receive DG-ID numbers to "00".



4. Touch **[BACK]**, then touch the screen to select "DG-ID RX".
"DG-ID RX" will turn orange.



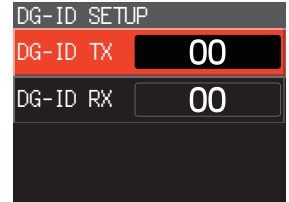
5. Touch **[DG-ID RX]**.
The numbers of the set value will turn orange in color.
6. Rotate the A-Band **DIAL** knob (upper side) to set the receive DG-ID.
7. Press and hold the **[GM]** key to save the setting and return to normal operation.



The setting of the FTM-400XD/D transceiver is complete.

FTM-300D/FTM200D

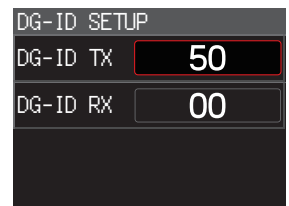
1. Press and hold the **[GM]** key.
The DG-ID number setting screen is displayed.



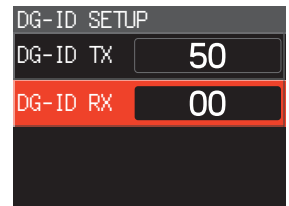
2. Press the **DIAL** knob, then rotate the **DIAL** knob to set the transmit DG-ID (DG-ID TX).



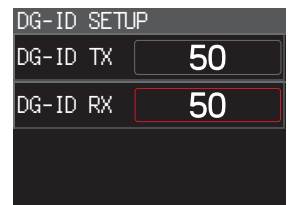
When setting the DG-ID number, pressing and holding the **DIAL** knob will set the transmit and the receive DG-ID numbers to "00".



3. Press the **DIAL** knob, then rotate the **DIAL** knob to set the "DG-ID RX".



4. Press the **DIAL** knob, then rotate the **DIAL** knob to set the receive DG-ID (DG-ID RX).

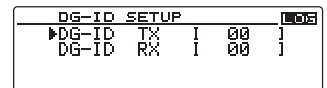


5. Press and hold the **[GM]** key to save the setting and return to normal operation.

The setting of the FTM-300D/FTM-200D transceiver is complete.

FTM-100D

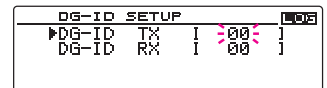
1. Press and hold the **[GM]** key.
The DG-ID number setting screen is displayed.



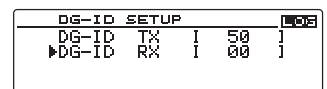
2. Press the **[GM]** key, then rotate the **DIAL** knob to set the transmit DG-ID (DG-ID TX).



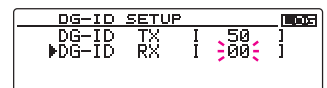
When setting the DG-ID number, pressing and holding the **[DISP]** (SETUP) key will set the transmit and the receive DG-ID numbers to "00".



3. Press the **[GM]** key, then rotate the **DIAL** knob to set the "DG-ID RX".



4. Press the **[GM]** key, then rotate the **DIAL** knob to set the receive DG-ID (DG-ID RX).



5. Press and hold the **[GM]** key to save the setting and return to normal operation.

The setting of the FTM-100D transceiver is complete.

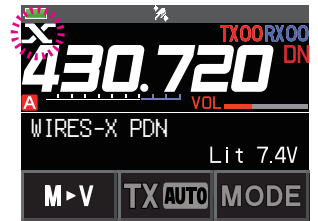
Start operation of Portable Node

□ FT5D

1. Press and hold the [GM/X] key on the portable node FT5D transceiver.

The “X” icon flashes on the upper left of the LCD screen.

- The display screen example uses the “Access Point” screen. In “Direct Operation”, “DIRECT” is displayed instead of frequency
- If the “X” icon does not blink when the [GM/X] key is pressed and holded, communication between the transceiver connected to the PC and the WIRES-X software has not been established, so check the cable connection and USB driver installation.
- To cancel the connection, press and hold the [GM/X] key.



2. When the operation of the portable node is started, the “X” icon changes from blinking to lit and the Node ID and the city of its own station are displayed.

Depending on the history of the previously connected node on the internet and the current connection status of the portable node, one of the following four screens is displayed.

If the portable node is not connected to a node or a room on the Internet

① When connection history is not stored

The lower connection destination display will be blank.

② When connection history is stored

The ID of the previous connected the Node or Room will blink.

Press the PTT switch or touch [blinking connection ID] to connect.

If the portable node is already connected to a node or a room on the Internet

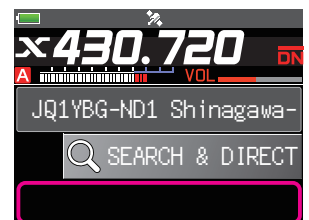
③ When connected to the same node or room as the ID of the previous connection history

The current connection ID is displayed in the lower part of the LCD. To communicate with this connection, proceed to “Communicating with other station” (page 56).

④ When connected to a node or room different from the previous connection history

The “▶” and the current connection ID is displayed in the lower part of the LCD.

When the DIAL knob is turned, the previous connection destination ID will blink. In this case, press the PTT switch or touch [blinking connection ID] to connect to the previous connection ID.



While operating the Portable Node, it may be not possible to switch between “Access Point” and “Direct Operation”. Press and hold the [GM/X] key to return to the transceiver setting screen, then press the [A/B] key.

While operating the portable node, the following functions may be set on the portable node FT5D transceiver.

Function	Key or Dial
Return to the transceiver setting screen	Press and hold the GM/X key
Displays the Function menu Screen*	Press the F MENU key
Enters the BACKTRACK screen	Touch [DISP] on the Function Menu Screen
Enters the Set mode*	Press and hold the F MENU key
Displays the frequency display screen	Press the V/M key
Displays the Function menu Screen*	Press the F MENU key
Selects the Transmission Power Level	Touch [TXPWR] in the Function Menu Screen
Selects Speaker Mute	Press the A/B key
Disconnects a node or a room on the Internet	Press and hold the BAND key
Squelch OFF	While MONI key is pressed
Adjusts the squelch level	Press the SQL key, then rotate the VOL knob

*Some items in the Set mode and Function menu are automatically set for the Portable Digital Node function, so the settings cannot be used

● Setting the speaker mute

The audio output to the speaker of the node station FT5D transceiver can be muted, it cannot be set in Direct Operation.

Press [**A/B**] key each time toggles the mute mode as follows.


→ **MUTE OFF** → **MUTE ALL** → **MUTE TX** → **MUTE RX** → **MUTE OFF** → . . .

MUTE OFF: Disable mute.

MUTE ALL: Mute both the received voice from the C4FM digital station and the voice from the node station on the Internet.

MUTE RX: Mute the received voice from the C4FM digital station.

MUTE TX: Mute the voice from the node station on the Internet.

When the MUTE setting is enabled, the mute icon “” blinks at the top of the LCD.



When the frequency setting screen is displayed, the mute setting status is displayed for about 1 second on the screen each time you press the [**A/B**] key.

□ FT3D/FT2D

1. Press the [X] key on the portable node FT3D/FT2D transceiver.

The "X" icon flashes on the upper left of the LCD screen.



- The display screen example uses the "Access Point" screen. In "Direct Operation", "DIRECT" is displayed instead of frequency
- If the "X" icon does not blink when the [X] key is pressed, communication between the transceiver connected to the PC and the WIRES-X software has not been established, so check the cable connection and USB driver installation.
- To cancel the connection, press and hold the [X] key.

2. When the operation of the portable node is started, the "X" icon changes from blinking to lit and the Node ID and the city of its own station are displayed.

Depending on the history of the previously connected node on the internet and the current connection status of the portable node, one of the following four screens is displayed.

If the portable node is not connected to a node or a room on the Internet

① When connection history is not stored

The lower connection destination display will be blank.

② When connection history is stored

The ID of the previous connected the Node or Room will blink.

Press the PTT switch or touch [blinking connection ID] to connect.

If the portable node is already connected to a node or a room on the Internet

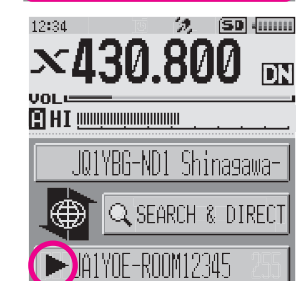
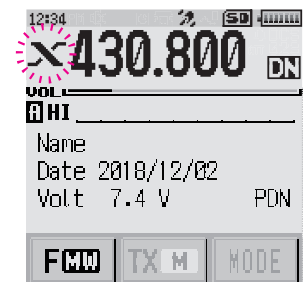
③ When connected to the same node or room as the ID of the previous connection history

The current connection ID is displayed in the lower part of the LCD. To communicate with this connection, proceed to "Communicating with other station" (page 56).

④ When connected to a node or room different from the previous connection history

The "▶" and the current connection ID is displayed in the lower part of the LCD.

When the DIAL knob is turned, the previous connection destination ID will blink. In this case, press the PTT switch or touch [blinking connection ID] to connect to the previous connection ID.



While operating the Portable Node, it may be not possible to switch between "Access Point" and "Direct Operation". Press and hold the [X] key to return to the transceiver setting screen, then press the [A/B] key.

While operating the portable node, the following functions may be set on the portable node FT3D/FT2D transceiver.

Function	Key or Dial
Return to the transceiver setting screen	Press and hold the X key
Enters the BACKTRACK screen	Press the DISP key
Enters the Set mode*	Press and hold the DISP key
Displays the frequency display screen	Press the V/M key
Displays the Function menu Screen*	Press the V/M key and then touch [F MW] on the LCD screen
Selects the Transmission Power Level	Touch [TXPWR] in the Function Menu Screen
Selects Speaker Mute	Press the A/B key
Disconnects a node or a room on the Internet	Press and hold the BAND key
Squelch OFF	While MONI key is pressed
Adjusts the squelch level	FT3D: Press the SQL key, then rotate the VOL knob FT2D: Press the SQL key, then rotate the DIAL knob

*Some items in the Set mode and Function menu are automatically set for the Portable Digital Node function, so the settings cannot be used.

● Setting the speaker mute

The audio output of the speaker of the node station FT3D/FT2D transceiver cannot be muted, it cannot be set in Direct Operation.

Press **[A/B]** key each time toggles the mute mode as follows.

→ **MUTE OFF** → **MUTE ALL** → **MUTE TX** → **MUTE RX** → **MUTE OFF** → . . .

MUTE OFF: Disable mute.

MUTE ALL: Mute both the received voice from the C4FM digital station and the voice from the node station on the Internet.

MUTE RX: Mute the received voice from the C4FM digital station.

MUTE TX: Mute the voice from the node station on the Internet.

When the MUTE setting is enabled, the mute icon "🔇" blinks at the top of the LCD.



When the frequency setting screen is displayed, the mute setting status is displayed for about 1 second on the screen each time you press the **[A/B]** key.

□ FTM-500D

1. Press the [D X] key on the portable node FTM-500D transceiver.

The “X” icon flashes on the LCD screen.

- The display screen example uses the “Access Point” screen. In “Direct Operation”, “DIRECT” is displayed instead of frequency
- If the “X” icon does not blink when the [D X] key is pressed, communication between the transceiver connected to the PC and the WIRES-X software has not been established, so check the cable connection and USB driver installation.
- To cancel the connection, press and hold the [D X] key.



2. When the operation of the portable node is started, the “X” icon changes from blinking to lit and the Node ID and the city of its own station are displayed.

Depending on the history of the previously connected node on the internet and the current connection status of the portable node, one of the following four screens is displayed.

If the portable node is not connected to a node or a room on the Internet

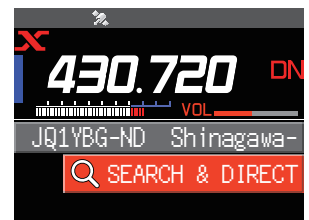
① When connection history is not stored

The connection destination display will be blank.

② When connection history is stored

The ID of the previously connected ID will blink.

Press the PTT switch to connect to the previously connected ID.



If the portable node is already connected to a node or a room on the Internet

③ When connected to the same node or room as the ID of the previous connection history

The current connection ID is displayed in the LCD. To communicate with this connection, proceed to “Communicating with other station” (page 56).

④ When connected to a node or room different from the previous connection history

The “▶” and the current connection ID are displayed on the LCD.

When the FUNC knob is turned, the previous connection ID will blink. In this case, press the PTT switch to connect to the previous connection ID.



While operating the Portable Node, it may not be possible to switch between “Access Point” and “Direct Operation”. Press and hold the [D X] key to return to the transceiver setting screen, then press the ↕ key.

While operating the portable node, the following functions may be set and operated on the portable node FTM-500D transceiver.

Function	Key or Dial
Return to the transceiver setting screen	Press and hold the D X key
Adjusts the squelch level	Press the MAIN Band VOL/SQL knob, then rotate the MAIN Band VOL/SQL knob
Enters the BACKTRACK screen	Press the DISP key
Selects the Transmission Power Level	Press and the P1 key ~ P4 key on the microphone* *Setting of "TX POWER" function is necessary for P1 ~ P4 keys in set mode.
Selects Speaker Mute	Press the MUTE key on the microphone
Turning the back light ON and OFF	Press and hold the DISP key
Disconnects a node or a room on the Internet	Press and hold the * key on the microphone

● **Setting the speaker mute**

The audio output to the speaker of the node station FTM-500D transceiver can be muted, it cannot be set in Direct Operation.

Press the [**MUTE**] key on the microphone each time toggles the mute mode as follows.

→ **MUTE OFF** → **MUTE ALL** → **MUTE TX** → **MUTE RX** → **MUTE OFF** → . . .

MUTE OFF: Disable mute.

MUTE ALL: Mute both the received voice from the C4FM digital station and the voice from the node station on the Internet.

MUTE RX: Mute the received voice from the C4FM digital station.

MUTE TX: Mute the voice from the node station on the Internet.

FTM-400XD/D

1. Press the **[D X]** key on the portable node FTM-400XD/D transceiver.

The “**X**” icon flashes on the upper left of the LCD screen.



- The display screen example shows the “**Access Point**” screen. In “**Direct Operation**”, “**DIRECT**” is displayed instead of the frequency
- If the “**X**” icon does not blink when the **[D X]** key is pressed, communication between the transceiver connected to the PC and the WIRES-X software has not been established, so check the cable connection and USB driver installation.
- To cancel the connection, press and hold the **[D X]** key.



2. When the operation of the portable node is started, the “**X**” icon changes from blinking to lit and the Node ID and the city of its own station are displayed.

Depending on the history of the previously connected node on the Internet and the current connection status of the portable node, one of the following three screens is displayed.

If the portable node is not connected to a node or a room on the Internet

① When connection history is not stored

The lower connection destination display will be blank.

② When connection history is stored

The ID of the previous connected Node or Room will display in gray.

Press the **PTT** switch or touch **[connection ID]** to connect.

Upon being connected, the text will light up in white.



If the portable node is already connected to a node or a room on the Internet

③ When connected to the same node or room as the ID of the previous connection history

The current connection ID is displayed in white. To communicate with this connection, proceed to “**Communicating with other station**” (page 56).

If the current connection destination is different from the previous connection ID, turning the **DIAL** knob displays the previous connection ID in gray. When the **PTT** switch is pressed or **[connection ID]** is touched, the node will connect **[connection ID]** is touched, the node will connect to the previous connection destination.



While operating the Portable Node, it may be not possible to switch between “**Access Point**” and “**Direct Operation**”. Press and hold the **[D X]** key to return to the transceiver setting screen, then press the **B-Band DIAL** knob.

While operating the portable node, the following functions may be set and operated on the portable node FTM-400XD/D transceiver.

Function	Key or Dial
Return to the transceiver setting screen	Press and hold the D X key or press the P3 key on the microphone (By default setting)
Squelch OFF	Press the P1 key on the microphone (By default setting)
Adjusts the squelch level	Touch [SQL] on the LCD screen, then rotate the DIAL knob
Enters the BACKTRACK (COMPASS) screen	Press the DISP (SETUP) key
Displays the Function menu Screen*	Press the F (MW) key
Turning the display ON and OFF	Press and hold the DISP (SETUP) key
Selects the Transmission Power Level	Touch [TX PWR] in the Function Menu Screen or press the P4 key on the microphone (By default setting)
Selects Speaker Mute	Press the [MUTE] on the LCD screen
Disconnects a node or a room on the Internet	Press the * key on the microphone (Press and hold)

*Some items in the Function menu are automatically set for the Portable Digital Node function, so the settings cannot be used.

● Setting the speaker mute

The audio output to the speaker of the node station FTM-400XD/D transceiver can be muted, it cannot be set in Direct Operation.

Touch the [**MUTE**] on the LCD each time toggles the mute mode as follows.

→ **MUTE OFF** → **MUTE ALL** → **MUTE TX** → **MUTE RX** → **MUTE OFF** → . . .

MUTE OFF: Disable mute.

MUTE ALL: Mute both the received voice from the C4FM digital station and the voice from the node station on the Internet.

MUTE RX: Mute the received voice from the C4FM digital station.

MUTE TX: Mute the voice from the node station on the Internet.

When the MUTE setting is enabled, the [**MUTE**] in orange on the LCD.

❑ FTM-300D or FTM-200D

1. Press the [D X] key on the portable node FTM-300D/FTM-200D transceiver.
The “X” icon flashes on the LCD screen.



- The display screen example uses the “Access Point” screen. In “Direct Operation”, “DIRECT” is displayed instead of frequency
- If the “X” icon does not blink when the [D X] key is pressed, communication between the transceiver connected to the PC and the WIRES-X software has not been established, so check the cable connection and USB driver installation.
- To cancel the connection, press and hold the [D X] key.



2. When the operation of the portable node is started, the “X” icon changes from blinking to lit and the Node ID and the city of its own station are displayed.

Depending on the history of the previously connected node on the internet and the current connection status of the portable node, one of the following four screens is displayed.

If the portable node is not connected to a node or a room on the Internet

① When connection history is not stored

The connection destination display will be blank.

② When connection history is stored

The ID of the previously connected ID will blink.

Press the PTT switch to connect to the previously connected ID.



If the portable node is already connected to a node or a room on the Internet

③ When connected to the same node or room as the ID of the previous connection history

The current connection ID is displayed in the LCD. To communicate with this connection, proceed to “Communicating with other station” (page 56).

④ When connected to a node or room different from the previous connection history

The “▶” and the current connection ID are displayed on the LCD.

When the DIAL knob is turned, the previous connection ID will blink. In this case, press the PTT switch to connect to the previous connection ID.



While operating the Portable Node, it may not be possible to switch between “Access Point” and “Direct Operation”. Press and hold the [D X] key to return to the transceiver setting screen, then press the [A/B] key.

While operating the portable node, the following functions may be set and operated on the portable node FTM-300D/FTM-200D transceiver.

Function	Key or Dial
Return to the transceiver setting screen	Press and hold the D X key
Adjusts the squelch level	Press the SQL key, then rotate the A-Band DIAL knob (FTM-300D) or the DIAL knob (FTM-200D)
Enters the BACKTRACK screen	Press the DISP key
Enters the Set mode*	Press and hold the F SETUP key (FTM-300D), Press and hold the F MENU key (FTM-200D)
Displays the Function Menu Screen (FTM-300D) Displays the Function List Screen (FTM-200D)	Press the F SETUP key (FTM-300D), Press the F MENU key (FTM-200D)
Selects the Transmission Power Level	Function Menu → [FUNCTION] → [TXPWR] (FTM-300D), Function List → [TXPWR] (FTM-200D), or press the P4 key on the microphone (by default setting)
Selects Speaker Mute	Press the MUTE key on the microphone
Turning the back light ON and OFF	Press and hold the DISP key
Disconnects a node or a room on the Internet	Press and hold the * key on the microphone

*Some items in the Set mode and Function menu are automatically set for the Portable Digital Node function, so the settings cannot be used.

● Setting the speaker mute

The audio output to the speaker of the node station FTM-300D/FTM-200D transceiver can be muted, it cannot be set in Direct Operation.

Press the **[MUTE]** key on the microphone each time toggles the mute mode as follows.

→ **MUTE OFF** → **MUTE ALL** → **MUTE TX** → **MUTE RX** → **MUTE OFF** → . . .

MUTE OFF: Disable mute.

MUTE ALL: Mute both the received voice from the C4FM digital station and the voice from the node station on the Internet.

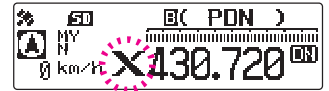
MUTE RX: Mute the received voice from the C4FM digital station.

MUTE TX: Mute the voice from the node station on the Internet.

FTM-100D

1. Press the **[D X]** key on the portable node FTM-100D transceiver.

The “X” icon flashes on the LCD screen.



- The display screen example uses the “Access Point” screen. In “Direct Operation”, “DIRECT” is displayed instead of frequency



- If the “X” icon does not blink when the **[D X]** key is pressed, communication between the transceiver connected to the PC and the WIRES-X software has not been established, so check the cable connection and USB driver installation.
- To cancel the connection, press and hold the **[D X]** key.

2. When the operation of the portable node is started, the “X” icon changes from blinking to lit and the Node ID and the city of its own station are displayed.

Depending on the history of the previously connected node on the internet and the current connection status of the portable node, one of the following four screens is displayed.

If the portable node is not connected to a node or a room on the Internet

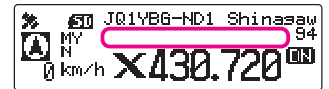
① **When connection history is not stored**

The connection destination display will be blank.

② **When connection history is stored**

The ID of the previously connected ID will blink.

Press the **PTT** switch to connect to the previously connected ID.



If the portable node is already connected to a node or a room on the Internet

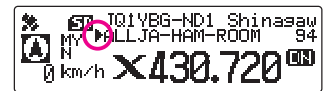
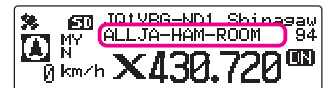
③ **When connected to the same node or room as the ID of the previous connection history**

The current connection ID is displayed in the LCD. To communicate with this connection, proceed to “Communicating with other station” (page 56).

④ **When connected to a node or room different from the previous connection history**

The “▶” and the current connection ID are displayed on the LCD.

When the **DIAL** knob is turned, the previous connection ID will blink. In this case, press the **PTT** switch to connect to the previous connection ID.



While operating the Portable Node, it may not be possible to switch between “Access Point” and “Direct Operation”. Press and hold the **[D X]** key to return to the transceiver setting screen, then press the **[A/B]** (DW) key.

While operating the portable node, the following functions may be set and operated on the portable node FTM-100D transceiver.

Function	Key or Dial
Return to the transceiver setting screen	Press and hold the D X key
Adjusts the squelch level	Press the SQL (VOICE) key, then rotate the DIAL knob
Enters the BACKTRACK screen	Press the DISP (SETUP) key
Selects the Transmission Power Level	Press the TX PO key or press the P4 key on the microphone (By default setting)
Selects Speaker Mute	Press the A/B (DW) key
Turning the display ON and OFF	Press and hold the DISP (SETUP) key
Disconnects a node or a room on the Internet	Press and hold the * key on the microphone

- **Setting the speaker mute**

The audio output to the speaker of the node station FTM-100D transceiver can be muted, it cannot be set in Direct Operation.

Touch the [A/B] (DW) key each time toggles the mute mode as follows.

→ **MUTE OFF** → **MUTE ALL** → **MUTE TX** → **MUTE RX** → **MUTE OFF** → . . .

MUTE OFF: Disable mute.

MUTE ALL: Mute both the received voice from the C4FM digital station and the voice from the node station on the Internet.

MUTE RX: Mute the received voice from the C4FM digital station.

MUTE TX: Mute the voice from the node station on the Internet.

Connecting to a node or a room on the Internet






The Portable Digital Node Mode may be not connected to anything other than a Digital Room or a Digital Node. In order to connect with the analog node station, it is necessary to use the **Portable HRI Mode** (page 60).

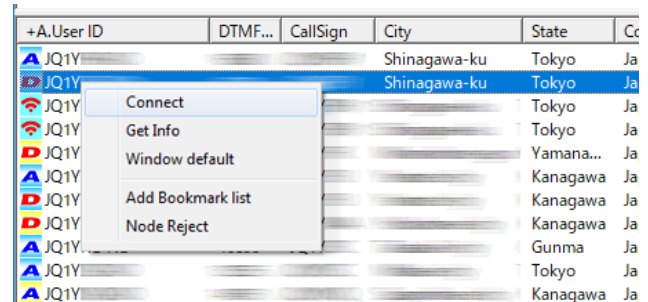
Connection to an Internet Digital Node or a Digital Room may be made in the following two ways:




- (1) Connecting to a node or a room by operating the **WIRES-X software on the PC**
- (2) Connecting to a node or a room by operating the transceiver of the portable node

(1) Connecting a node or a room by operating the **WIRES-X software on the PC**

On the WIRES-X software main screen, you can easily connect to the desired room or node station.

1. Click the **Digital Node** or **Digital Room** to connect.
 - Icon of a digital room or a digital node
 -  : Digital Open room (Only the Digital Nodes may be connected)
 -  : Digital Node Station
 -  : Portable Digital Node Station
2. Right-click on the selected **Digital Node** or **Digital Room**.
The command list is displayed.
3. Click the [**connect**].



When a connection is successfully established, the IDLE indicator “” will change to the NET indicator “”, and the User ID of the connected Node station or Room “” is displayed.

“**Connected**” will appear on the LCD of the portable node station's transceiver or the transceiver accessing the portable node station in WIRES-X mode.

● **Room Pop-up Window**

When connecting to the room a window will pop up displaying the operational status of the room. For details, refer to “**Room pop-up window**” (page 68).

(2) Connecting a node or a room by operating the transceiver of the portable node

□ FT5D/FT3D/FT2D

There are five ways to connect to a digital room or a digital node on the Internet.

- ① **Searching from the node & room lists** (page 43)
- ② **Searching the node ID or the room** (page 43)
- ③ **Selecting the node or the rooms registered in the category list** (page 44)
- ④ **Connecting to the node or room that was most recently connected** (page 45)
- ⑤ **Entering the DTMF ID number (5 digits) of the node or the room** (page 45)

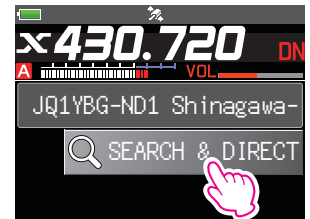


Another C4FM digital transceiver accessing the portable node frequency and using the WIRES-X DG-ID number may also connect a node or a room. For details, refer to the **Operating Manual (WIRES-X Edition)** of each transceiver.

① Searching from the node & room lists

1. Touch **[SEARCH & DIRECT]**.

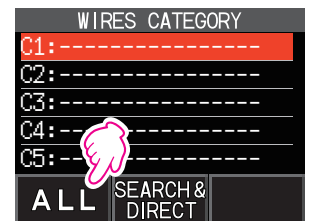
Displays the category list.



2. Touch **[ALL]**.

Displays the list of accessible nodes and rooms.

- Connection destinations are displayed from the room list and then node list.
- On the connection destination room columns, the number of activities (the number of nodes connected to each room) appears on the right side.

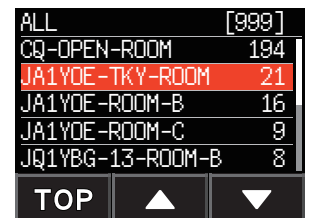


3. Touch the node or room to connect and establish the connection.

By pressing the PTT switch, the connection is established while talking.

- Touch **[▲]** or **[▼]** to download and display 20 rooms or nodes at a time. Touch **[TOP]** to return to the first 20 rooms or nodes.

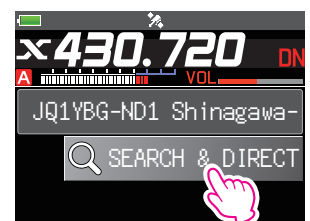
Once connection is successfully established, **"Connected"** will appear on the LCD. If connection is unsuccessful, an error message appears and the screen returns to the list of nodes and rooms.



② Searching by node or room ID

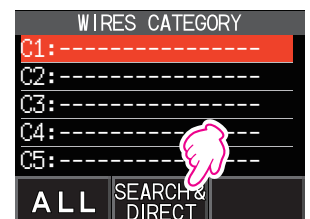
1. Touch **[SEARCH & DIRECT]**.

Displays the category list.



2. Touch **[SEARCH & DIRECT]**.

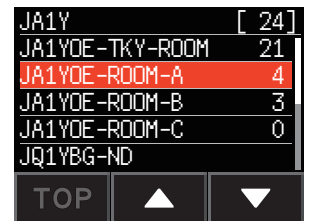
Displays the character input screen.



- Enter all or part of the Room ID or the Node ID.
The list is searched for the matching foreword part of the ID.

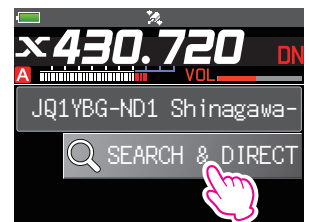


- Touch [ENT].
If connection destinations with the foreword of the ID matching the entered ID are found, they will be listed.
 - Connection destinations are displayed from the room list and then node list.
 - On the connection destination room columns, the number of activities (the number of nodes connected to each room) appears on the right side.
 - If there is no connection destination matching the entered name, “No Matches” appears and then the screen returns to the character input screen.
 - If the entered ID is found, the transceiver establishes connection immediately.
 - Touch [▲] or [▼] to download and display 20 rooms or nodes at a time. Touch [TOP] to return to the first 20 rooms or nodes.
- Touch the node or room you want to connect to start the connection.
 - Once connection is successfully established, “**Connected**” will appear on the LCD.
 - If connection is unsuccessful, an error message appears and the screen returns to the list of nodes and rooms.



③ Connecting to registered nodes or rooms to the category list.

- Touch [SEARCH & DIRECT].
Displays the category list.



- Touch one of [C1] to [C5].
Displays the node and room lists.
 - For details on registering nodes and rooms, see “**Registering the connected node or room in the category list**” (page 57).
 - Connection destinations are displayed from the room list and then node list.
 - On the connection destination room columns, the number of activities (the number of nodes connected to each room) appears on the right side.



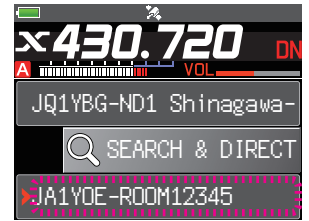
Items may be listed in order according to the number of activities, or access history from [WIRES-X] → [2 SEARCH SETUP] in the setting mode.

- Touch the node or room you want to connect to start a connection.
 - Once connection is successfully established, “**Connected**” will appear on the LCD.
 - If connection is unsuccessful, an error message appears and the screen returns to the list of nodes and rooms.



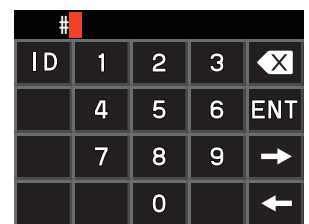
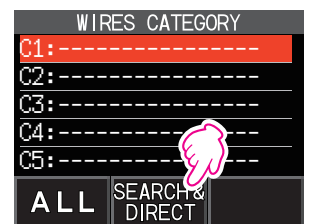
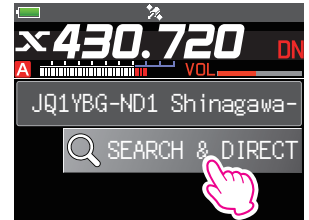
④ **Connecting to the node or room that was most recently connected**

1. If a node ID or a room ID has been previously connected on the Internet, it appears and flashes at the bottom of the screen.
 - Touch the flashing node ID or room ID to start connection, once connection is established, the menu list of the node (room) you are connected to will appear.
 - If connection is unsuccessful, an error message appears and the name flashes again.



⑤ **Entering the DTMF ID number (5 digits) of the node or the room**

1. Touch [SEARCH & DIRECT].
Displays the category list.
2. Touch [SEARCH & DIRECT].
Displays the character input screen.
3. Touch [ID].
Displays the DTMF ID input screen.
4. Enter the 5-digit DTMF ID.
5. Touch [ENT] to start a connection.
 - Once connection is successfully established, "Connected" will appear on the LCD.
 - If connection is unsuccessful, an error message appears and the screen returns to the DTMF ID input screen.



FTM-500D

There are five ways to connect to a digital room or a digital node on the Internet.

- ① **Searching from the node & room lists** (page 46)
- ② **Searching the node ID or the room** (page 46)
- ③ **Selecting the node or the rooms registered in the category list** (page 47)
- ④ **Connecting to the node or room you have most recently connected** (page 47)
- ⑤ **Entering the DTMF ID number (5 digits) of the node or the room** (page 48)

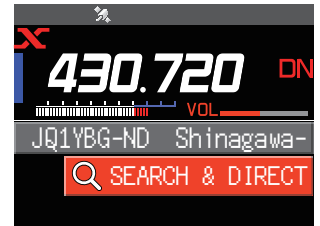


Another C4FM digital transceiver accessing the portable node frequency and using the WIRES-X DG-ID number may also connect a node or a room. For details, refer to the **Operating Manual (WIRES-X Edition)** of each transceiver.

① Searching from the node & room lists

1. When the local node is displayed in the upper row, rotate the **FUNC** knob to select **[SEARCH & DIRECT]** and press the **FUNC** knob.

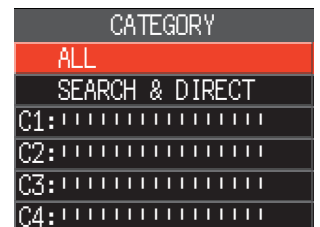
Displays the category list.



2. Rotate the **FUNC** knob to select **[ALL]** and press the **FUNC** knob.

Displays the list of accessible nodes and rooms.

- Connection destinations are displayed from the room list and then node list.
- On the connection destination room columns, the number of activities (the number of nodes connected to each room) appears on the right side.



3. Rotate the **FUNC** knob to select a node or room and press the **FUNC** knob to start connection.

By pressing the **PTT** switch, you may also establish the connection while talking. Once connection is successfully established, **“Connected”** will appear on the LCD. If connection is unsuccessful, an error message appears and the screen returns to the list of nodes and rooms.



② Searching by node or room ID

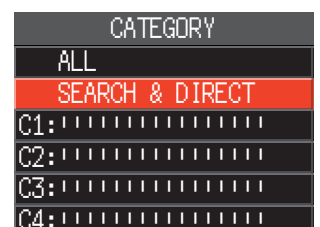
1. When the local node is displayed in the upper row, rotate the **FUNC** knob to select **[SEARCH & DIRECT]** and press the **FUNC** knob.

Displays the category list.



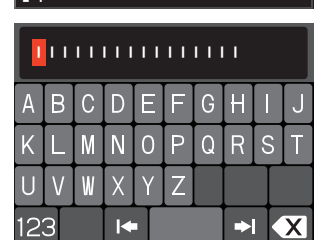
2. Rotate the **FUNC** knob to select **[SEARCH & DIRECT]**, then press the **FUNC** knob.

Displays the character input screen.



3. Enter all or part of the Room ID or the Node ID, then press the **FUNC** knob.

The list is searched for the matching forward part of the ID.



If connection destinations with the foreword of the ID matching the entered ID are found, they will be listed.

- The number of matches with the searched character string is displayed as “JA1Y” → 24.
 - Connection destinations are displayed from the room list and then node list.
 - On the connection destination room columns, the number of activities (the number of nodes connected to each room) appears on the right side.
 - If there is no connection destination matching the entered name, “No Matches” appears and then the screen returns to the character input screen.
 - If the entered ID is found, the transceiver establishes connection immediately.
5. Rotate the **FUNC** knob to select a node or room and press the **FUNC** knob to start connection.
- Once connection is successfully established, “**Connected**” will appear on the LCD.
 - If connection is unsuccessful, an error message appears and the screen returns to the list of nodes and rooms.

”JA1Y” → 24	
JA1YOE-TKY-ROOM	42
JA1YOE-ROOM-A	31
JA1YOE-ROOM-B	16
JA1YOE-ROOM-C	1
JA1YOE-ND1	
JA1YOE-TKY	

③ Connecting to registered nodes or rooms to the category list

1. When the local node is displayed in the upper row, rotate the **FUNC** knob to select [SEARCH & DIRECT] and press the **FUNC** knob.
Displays the category list.



2. Rotate the **FUNC** knob to select the category [C1] to [C5] and then press the **FUNC** knob.
Displays the node and room lists.
- For details on registering nodes and rooms, see “**Registering the connected node or room in the category list**” (page 57).
 - Connection destinations are displayed from the room list and then node list.
 - On the connection destination room columns, the number of activities (the number of nodes connected to each room) appears on the right side.

CATEGORY	
ALL	
SEARCH & DIRECT	
C1: TOKYO	
C2: FISHING	
C3:	
C4:	



Items may be listed in order according to the number of activities, or access history from Setup Menu → [65 SEARCH SETUP].

3. Rotate the **FUNC** knob to select the node or room and then press the **FUNC** knob to start a connection.
- Once connection is successfully established, “**Connected**” will appear on the LCD.
 - If connection is unsuccessful, an error message appears and the screen returns to the list of nodes and rooms.

C1: TOKYO	
CQ-JAPAN	123
JA1YOE-TKY-ROOM	42

④ Connecting to the node or room you have most recently connected

1. If a node or room has been connected on the Internet before, the last connected node or room will blink at the bottom of the screen.
- Rotate the **FUNC** knob to select the blinking node or room and press the **FUNC** knob or the **PTT** switch to start connection.
 - If connection is unsuccessful, an error message appears and the name flashes again.



⑤ **Entering the DTMF ID number (5 digits) of the node or the room**

1. Press and hold the [#] key on the microphone.
Displays the DTMF ID input screen.
2. Enter the 5-digit DTMF ID.
3. Press the [#] key on the microphone to start a connection.
 - Once connection is successfully established, “**Connected**” will appear on the LCD.
 - If connection is unsuccessful, an error message appears and the screen returns to the DTMF ID input screen.
 - Press the [*] key on the microphone to cancel the DTMF input screen.



❑ FTM-400XD/D

There are five ways to connect to a digital room or a digital node on the Internet.

- ① **Searching from the node & room lists** (page 49)
- ② **Searching the node ID or the room** (page 49)
- ③ **Selecting the node or the rooms registered in the category list** (page 50)
- ④ **Connecting to the node or room you have most recently connected** (page 51)
- ⑤ **Entering the DTMF ID number (5 digits) of the node or the room** (page 51)



Another C4FM digital transceiver accessing the portable node frequency and using the WIRES-X DG-ID number may also connect a node or a room. For details, refer to the **Operating Manual (WIRES-X Edition)** of each transceiver.

① Searching from the node & room lists

1. Touch [▼].

Displays the category list.

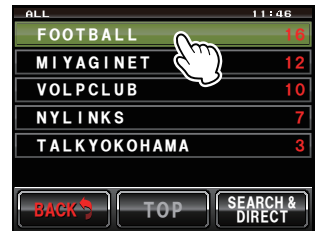
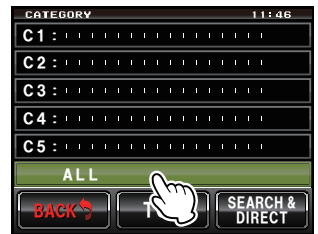
2. Touch [ALL] twice.

Displays the list of accessible nodes and rooms.

- Connection destinations are displayed from the room list and then node list.
- On the connection destination room columns, the number of activities (the number of nodes connected to each room) appears on the right side.

3. Touch the node or room you want to connect to establish the connection.

By pressing the PTT switch, you may also establish the connection while talking. Once connection is successfully established, “**Connected**” will appear on the LCD. If connection is unsuccessful, an error message appears and the screen returns to the list of nodes and rooms.



② Searching by node or room ID

1. Touch [▼].

Displays the category list.

2. Touch [SEARCH & DIRECT].

Displays the character input screen.



- Enter all or part of the Room ID or the Node ID.
The list is searched for the matching foreword part of the ID.



- Touch [ENT].
If connection destinations with the foreword of the ID matching the entered ID are found, they will be listed.
 - Connection destinations are displayed from the room list and then node list.
 - On the connection destination room columns, the number of activities (the number of nodes connected to each room) appears on the right side.
 - If there is no connection destination matching the entered name, “No Data” appears and then the screen returns to the character input screen.
 - If the entered ID is found, the transceiver establishes connection immediately.
- Touch the node or room you want to connect to start the connection.
 - Once connection is successfully established, “**Connected**” will appear on the LCD.
 - If connection is unsuccessful, an error message appears and the screen returns to the list of nodes and rooms.



③ Connecting to registered nodes or rooms to the category list

- Touch [▼].
Displays the category list.



- Touch one of [C1] to [C5].
Displays the node and room lists.
 - For details on registering nodes and rooms, see “**Registering the connected node or room in the category list**” (page 57).
 - Connection destinations are displayed from the room list and then node list.
 - On the connection destination room columns, the number of activities (the number of nodes connected to each room) appears on the right side.



Items may be listed in order according to the number of activities, or access history from [WIRES-X] → [2 SEARCH SETUP] in the setting mode.

- Touch the node or room you want to connect to start a connection.
 - Once connection is successfully established, “**Connected**” will appear on the LCD.
 - If connection is unsuccessful, an error message appears and the screen returns to the list of nodes and rooms.



④ **Connecting to the node or room you have most recently connected**

1. If you have previously connected to a node ID or a room ID on the Internet, it appears in gray at the bottom of the screen.
 - Press the **PTT** switch or touch the ID to connect to the previous connection destination. When you connect, the connection destination is displayed in white.
 - If connection is unsuccessful, an error message appears and the name flashes again.



⑤ **Entering the DTMF ID number (5 digits) of the node or the room**

1. Press and hold the [#] key on the microphone.
Displays the DTMF ID input screen.
2. Enter the 5-digit DTMF ID.
3. Press the [#] key on the microphone to start a connection.
 - Once connection is successfully established, **“Connected”** will appear on the LCD.
 - If connection is unsuccessful, an error message appears and the screen returns to the DTMF ID input screen.
 - Press the [*] key on the microphone to cancel the DTMF input screen.

❑ FTM-300D/FTM-200D

There are five ways to connect to a digital room or a digital node on the Internet.

- ① **Searching from the node & room lists** (page 52)
- ② **Searching the node ID or the room** (page 52)
- ③ **Selecting the node or the rooms registered in the category list** (page 53)
- ④ **Connecting to the node or room you have most recently connected** (page 53)
- ⑤ **Entering the DTMF ID number (5 digits) of the node or the room** (page 54)

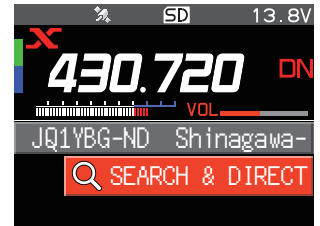


Another C4FM digital transceiver accessing the portable node frequency and using the WIRES-X DG-ID number may also connect a node or a room. For details, refer to the **Operating Manual (WIRES-X Edition)** of each transceiver.

① Searching from the node & room lists

1. When the local node is displayed in the upper row, rotate the **DIAL** knob to select **[SEARCH & DIRECT]** and press the **DIAL** knob.

Displays the category list.



2. Rotate the **DIAL** knob to select **[ALL]** and press the **DIAL** knob.

Displays the list of accessible nodes and rooms.

- Connection destinations are displayed from the room list and then node list.
- On the connection destination room columns, the number of activities (the number of nodes connected to each room) appears on the right side.



3. Rotate the **DIAL** knob to select a node or room and press the **DIAL** knob to start connection.

By pressing the **PTT** switch, you may also establish the connection while talking. Once connection is successfully established, **“Connected”** will appear on the LCD. If connection is unsuccessful, an error message appears and the screen returns to the list of nodes and rooms.



② Searching by node or room ID

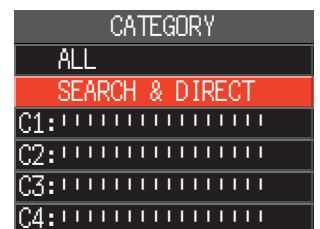
1. When the local node is displayed in the upper row, rotate the **DIAL** knob to select **[SEARCH & DIRECT]** and press the **DIAL** knob.

Displays the category list.

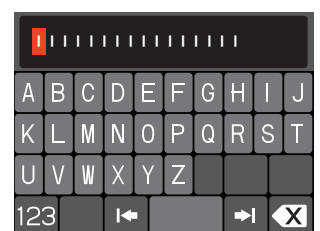


2. Rotate the **DIAL** knob to select **[SEARCH & DIRECT]**, then press the **DIAL** knob.

Displays the character input screen.



3. Enter all or part of the Room ID or the Node ID, then press the **DIAL** knob. The list is searched for the matching forward part of the ID.



If connection destinations with the foreword of the ID matching the entered ID are found, they will be listed.

- The number of matches with the searched character string is displayed as “JA1Y” → 24.
 - Connection destinations are displayed from the room list and then node list.
 - On the connection destination room columns, the number of activities (the number of nodes connected to each room) appears on the right side.
 - If there is no connection destination matching the entered name, “No Matches” appears and then the screen returns to the character input screen.
 - If the entered ID is found, the transceiver establishes connection immediately.
5. Rotate the **DIAL** knob to select a node or room and press the **DIAL** knob to start connection.
- Once connection is successfully established, “**Connected**” will appear on the LCD.
 - If connection is unsuccessful, an error message appears and the screen returns to the list of nodes and rooms.

"JA1Y" → 24	
JA1YOE-TKY-ROOM	42
JA1YOE-ROOM-A	31
JA1YOE-ROOM-B	16
JA1YOE-ROOM-C	1
JA1YOE-ND1	
JA1YOE-TKY	

③ Connecting to registered nodes or rooms to the category list

1. When the local node is displayed in the upper row, rotate the **DIAL** knob to select **[SEARCH & DIRECT]** and press the **DIAL** knob.
Displays the category list.



2. Rotate the **DIAL** knob to select the category **[C1]** to **[C5]** and then press the **DIAL** knob.
Displays the node and room lists.
- For details on registering nodes and rooms, see “**Registering the connected node or room in the category list**” (page 57).
 - Connection destinations are displayed from the room list and then node list.
 - On the connection destination room columns, the number of activities (the number of nodes connected to each room) appears on the right side.

CATEGORY	
ALL	
SEARCH & DIRECT	
C1: TOKYO	
C2: FISHING	
C3:	
C4:	



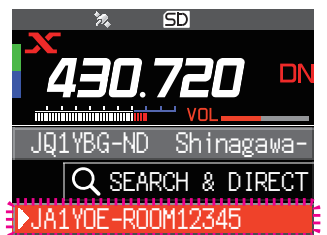
Items may be listed in order according to the number of activities, or access history from Setup Menu → **[WIRES-X]** → **[2 SEARCH SETUP]** (FTM-300D) or Setup Menu → **[62 SEARCH SETUP]** (FTM-200D).

3. Rotate the **DIAL** knob to select the node or room and then press the **DIAL** knob to start a connection.
- Once connection is successfully established, “**Connected**” will appear on the LCD.
 - If connection is unsuccessful, an error message appears and the screen returns to the list of nodes and rooms.

C1: TOKYO	
CQ-JAPAN	123
JA1YOE-TKY-ROOM	42

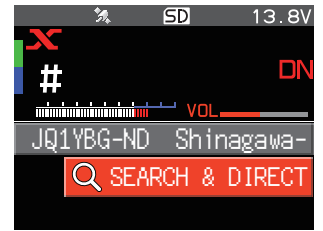
④ Connecting to the node or room you have most recently connected

1. If a node or room has been connected on the Internet before, the last connected node or room will blink at the bottom of the screen.
- Rotate the **DIAL** knob to select the blinking node or room and press the **DIAL** knob or the **PTT** switch to start connection.
 - If connection is unsuccessful, an error message appears and the name flashes again.



⑤ **Entering the DTMF ID number (5 digits) of the node or the room**

1. Press and hold the [#] key on the microphone.
Displays the DTMF ID input screen.
2. Enter the 5-digit DTMF ID.
3. Press the [#] key on the microphone to start a connection.
 - Once connection is successfully established, “**Connected**” will appear on the LCD.
 - If connection is unsuccessful, an error message appears and the screen returns to the DTMF ID input screen.
 - Press the [*] key on the microphone to cancel the DTMF input screen.



FTM-100D

There are four ways to connect to a digital room or a digital node on the Internet.

- ① **Searching from the node & room lists** (page 55)
- ② **Searching the node ID or the room** (page 55)
- ③ **Connecting to the node or room you have most recently connected** (page 56)
- ④ **Entering the DTMF ID number (5 digits) of the node or the room** (page 56)



Another C4FM digital transceiver accessing the portable node frequency and using the WIRES-X DG-ID number may also connect a node or a room. For details, refer to the **Operating Manual (WIRES-X Edition)** of each transceiver.

① Searching from the node & room lists

1. Press the **[BAND]** (MHz) key.

Displays the category list.



2. Rotate the **DIAL** knob to select **[ALL]**, and press the **[DISP]** (SETUP) key.

Displays the list of accessible nodes and rooms.

- Connection destinations are displayed from the room list and then node list.
- On the connection destination room columns, the number of activities (the number of nodes connected to each room) appears on the right side.

3. Rotate the **DIAL** knob to select the node or room you want to establish a connection and press the **[DISP]** (SETUP) key to start the connection.

By pressing the PTT switch, you may also establish the connection while talking.

Once connection is successfully established, **“Connected”** will appear on the LCD.

If connection is unsuccessful, an error message appears and the screen returns to the list of nodes and rooms.

ALL 999	
ALLJA-HAM-ROOM	94
ALLJA-DX-ROOM	41
WIRES-X-ROOM1	22
WIRES-X-ROOM2	18

② Searching by node or room ID

1. Press the **[BAND]** (MHz) key.

Displays the category list.



2. Rotate the **DIAL** knob to select **[SEARCH & DIRECT]**, and press the **[DISP]** (SETUP) key.

Displays the character input screen.



3. Enter all or part of the Room ID or the Node ID.

The list is searched for the matching foreword part of the ID.



4. Press the **[DISP]** (SETUP) key.

If connection destinations with the foreword of the ID matching the entered ID are found, they will be listed.

- Connection destinations are displayed from the room list and then node list.
- On the connection destination room columns, the number of activities (the number of nodes connected to each room) appears on the right side.
- If there is no connection destination matching the entered name, **“No Data”** appears and then the screen returns to the character input screen.
- If the entered ID is found, the transceiver establishes connection immediately.

5. Rotate the **DIAL** knob to select the node or room you want to connect, then press the **[DISP]** (SETUP) key to start the connection.

- Once connection is successfully established, **“Connected”** will appear on the LCD.
- If connection is unsuccessful, an error message appears and the screen returns to the list of nodes and rooms.

ALL	
ALLJA-HAM-ROOM	94
ALLJA-DX-ROOM	41

③ Connecting to the node or room you have most recently connected

1. If a node ID or a room ID has been previously connected to on the Internet, it appears and flashes on the LCD.
 - Press the **[BAND]** (MHz) key to start connection, and once connection is established, the menu list of the node (room) you are connected to will appear.
 - If connection is unsuccessful, an error message appears and the name flashes again.



④ Entering the DTMF ID number (5 digits) of the node or the room

1. Press and hold the **[#]** key on the microphone.
Displays the DTMF ID input screen.
2. Enter the 5-digit DTMF ID.
3. Press the **[#]** key on the microphone to start a connection.
 - Once connection is successfully established, **"Connected"** will appear on the LCD.
 - If connection is unsuccessful, an error message appears and the screen returns to the DTMF ID input screen.
 - Press the **[*]** key on the microphone to cancel the DTMF input screen.

Communicating with other station

1. Press the **PTT** switch on the transceiver of the portable node to communicate with the other station.
 - In the Access Point, the signal is relayed to the Internet station and also transmitted from the C4FM digital radio at the same time.
 - In the Direct Operation, the signal will only be relayed to the other station on the Internet. The TX/BUSY LED lights red but the transceiver does not transmit radio waves, so the PO meter does not swing.
2. Release the **PTT** switch to return to receive mode.
 - In the Access Point operation, the voice from the other station on the Internet sounds from the speaker, and at the same time the C4FM digital signal is transmitted. Also, the voice from another C4FM digital transceiver accessing the portable node will sound on the speaker, and at the same time it will be relayed to the other station on the Internet.
 - In the Direct Operation, the TX/BUSY LED lights green while receiving communication from the other station on the Internet, but the S meter does not swing.
 - In the Access Point operation, when setting a receive DG-ID number (except for "00"), set the transmit DG-ID number to the same number. A node that is set to a different number will not work properly.
 - When setting the receive DG-ID number to "00" and setting the transmit DG-ID number to anything other than "00", the voice of all received C4FM digital stations will be heard on the speaker, but for the transmit DG-ID Only the matched communication is relayed to the opposite station on the Internet.



Disconnecting from the node or room

To disconnect a connected Internet node or room, use the transceiver below or select [**Disconnect**] from the [**Connect**] menu of the WIRES-X software.

FT5D, FT3D or FT2D: Press and hold the [**BAND**] key.

FTM-500D, FTM-400XD/D, FTM-300D,

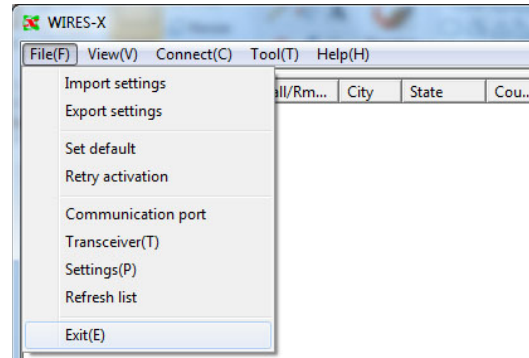
FTM-200D or FTM-100D: Press and hold the [*****] key on the microphone.

Closing the WIRES-X software

1. From the “File” menu, select “Exit”

If “Enable WIRES-X Auto Start.” has been selected when installing the WIRES-X software, the software will restart immediately after closing the software.

If you do not want to restart the software, click the WIRES-X icon on the right part of the Windows task bar (or from the hidden indicator list), then select “Quit” or “Auto Start” to remove the check mark.



● Confirming the location of the other station

When latitude and longitude data is included in the signal of the other station, you may check the distance and direction of the other station in real time on the transceiver screen.

FT5D: Press the [**F MENU**] key, then touch [**DISP**] to display the compass screen. Press the [**F MENU**] key again to return to the normal screen.

FT3D or FT2D: Press the [**DISP**] key to display the compass screen. Press the [**DISP**] key again to return to the normal screen.

FTM-500D Press the [**DISP**] key on the connection screen to display the compass screen. Press the [**DISP**] key again to return to the normal screen.

FTM-400XD/D: Press the [**DISP**] (SETUP) key to display the compass screen. Press the [**DISP**] (SETUP) key twice to return to the normal screen.

FTM-300D or FTM-200D: Press the [**DISP**] key on the connection screen to display the compass screen. Press the [**DISP**] key again to return to the normal screen.

FTM-100D: Press the [**DISP**] (SETUP) key to display the compass screen. Press the [**DISP**] (SETUP) key twice to return to the normal screen.

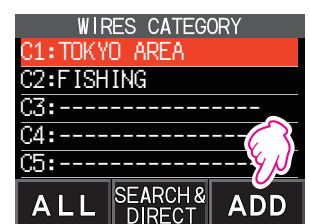
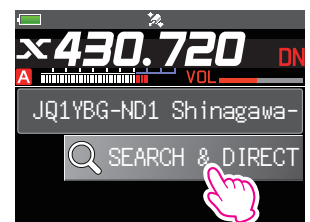
● Registering the connected node or room in the category list

FT5D/FT3D/FT2D

1. Touch the node or room you want to connect to.

Displays the category list.

2. Touch [**ADD**].



3. Touch the desired category.

The name of the node or room currently connected is added to the list of the registered nodes and rooms.



If the selected category is already registered with the same node or room, a beep sounds and it will not register.



4. Press the **[BACK]** key twice to return to the connection screen.

FTM-500D

1. Rotate the **FUNC** knob to select the node or room and then press the **FUNC** knob.
Displays the category list.



2. Rotate the **FUNC** knob to select the desired category and then press the **FUNC** knob.

The name of the node or room currently connected is added to the list of the registered nodes and rooms.

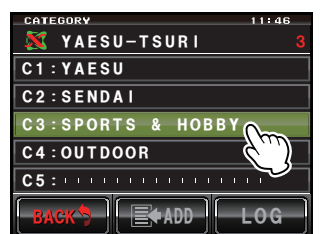


If the selected category is already registered with the same node or room, a beep sounds and it will not register.

3. Press the **[BACK]** key to return to the connection screen.

FTM-400XD/D

1. Touch the node or room to connect to.
Displays the category list.



2. Touch the desired category twice.

The name of the node or room that is currently connected, is added to the list of the registered nodes and rooms.



If the selected category is already registered with the same node or room, a beep sounds and it will not register.

3. Press the **[BACK]** key to return to the connection screen.

☐ **FTM-300D/FTM-200D**

1. Rotate the **DIAL** knob to select the node or room and then press the **DIAL** knob.
Displays the category list.

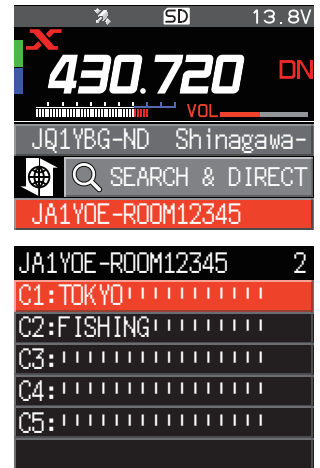
2. Rotate the **DIAL** knob to select the desired category and then press the **DIAL** knob.

The name of the node or room currently connected is added to the list of the registered nodes and rooms.



If the selected category is already registered with the same node or room, a beep sounds and it will not register.

3. Press the **[BACK]** key to return to the connection screen.



Using the Portable HRI Mode



When communicating via the Internet in “**Portable HRI Mode**”, refer to “**Adjusting Audio Level in the Access Point (Portable HRI Mode)**” (page 69) or “**Adjusting Audio Level in the Direct Operation (Portable HRI Mode)**” (page 71) and adjust the audio level of the computer.

Connecting the transceiver and the PC

Refer to “**Communicating with digital or analog FM mode (Portable HRI Mode)**” (page 13) and connect the transceiver to the PC.

Starting the WIRES-X software

1. Double click the [**Wires-X**] icon on the desktop of the computer screen.

The main screen of WIRES-X software is displayed.

For details about the main screen, refer to “**WIRES-X Software Main Screen**” (page 66).

Starting the transceiver in special mode



- To return the transceiver to the normal mode, repeat procedure 1 in the below.
 - To switch between “**Portable Digital Node Mode**” and “**Portable HRI Mode**”, return the transceiver to the normal mode first and then perform the above operation.
-



-The transceiver connected to the PC of the portable station cannot use the news station function or the GM function.

FT5D

1. Press and hold the [**GM/X**] key and the [**F MENU**] key simultaneously, while turning the radio **ON**.
2. Press the [**A/B**] key to select “**Access Point**” or “**Direct Operation**”.

The set operation mode is indicated on the frequency display as follows:

Access Point: “(Frequency Display)”

Direct Operation: “DIRECT”



To communicate with an analog node station via Direct Operation using the FT5D transceiver, press the [**V/M**] key to turn **ON** the analog voice output (uplink). An “*” will appear on the screen at the right side of the call sign. For details, refer to “Output of analog audio (uplink) setting” (page 50).

FT3D/FT2D

1. Press and hold the [**X**] key and the [**BACK**] key simultaneously, while turning the radio **ON**.
2. Press the [**A/B**] key to select “**Access Point**” or “**Direct Operation**”.

The set operation mode is indicated on the frequency display as follows:

Access Point: “(Frequency Display)”

Direct Operation: “DIRECT”



To communicate with an analog node station via Direct Operation using the FT5D, FT3D and FT2D transceiver, press the [**V/M**] key to turn **ON** the analog audio output (uplink). An “*” will appear on the screen at the right side of the call sign. For details, refer to “Output of analog audio (uplink) setting” (page 50).

FTM-500D

1. Press and hold the [**D X**] key and the [**GM**] key simultaneously, while turning the radio **ON**.
2. Press the **↕** key to select “**Access Point**” or “**Direct Operation**”.

The set operation mode is indicated on the MAIN Band frequency display as follows:

Access Point: “(Frequency display)”

Direct Operation: “DIRECT”

❑ FTM-400XD/D

1. Press and hold the [D X] key and the [GM] key simultaneously, while turning the radio ON.
2. Press the B-Band DIAL knob to select “Access Point” or “Direct Operation”.

The set operation mode is indicated on the A Band frequency display as follows:

Access Point: “(Frequency display)”

Direct Operation: “DIRECT”

❑ FTM-300D/FTM-200D

1. Press and hold the [D X] key and the [GM] key simultaneously, while turning the radio ON.
2. Press the [A/B] key to select “Access Point” or “Direct Operation”.

The set operation mode is indicated on the A Band frequency display as follows:

Access Point: “(Frequency display)”

Direct Operation: “DIRECT”

❑ FTM-100D

1. Press and hold the [D X] key and the [GM] key simultaneously, while turning the radio ON.
2. Press the [A/B] (DW) key to select “Access Point” or “Direct Operation”.

The set operation mode is indicated on the sub frequency display as follows:

Access Point: “NODE”

Direct Operation: “DIRECT”

Connecting a node or a room by operating the WIRES-X software on the PC

On the WIRES-X software main screen, the node may be easily connected to the desired room or node station.

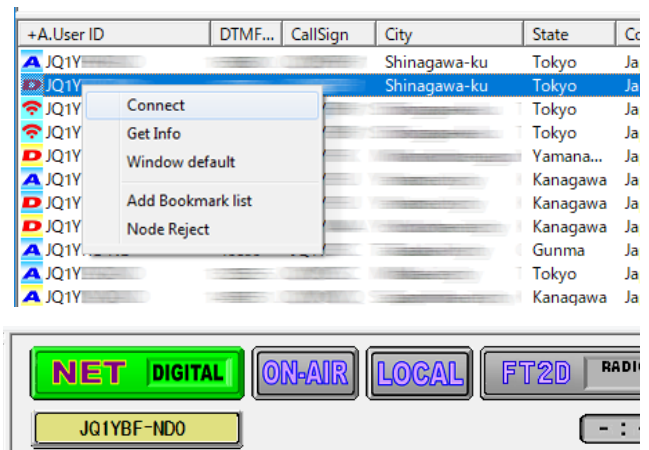
1. Click the Digital Node or Digital Room to connect.
2. Right-click on the selected Node or Room.

The command list is displayed.

3. Click the [connect].

When a connection is successfully established, the IDLE indicator “IDLE DIGITAL” will change to the NET indicator “NET DIGITAL”, and the User ID of the connected Node station or Room “JQ1YBF” is displayed.

“Connected” will appear on the LCD of the portable node station's transceiver or the transceiver accessing the portable node station in WIRES-X mode.



● Room Pop-up Window

When connecting to the room a window will pop up displaying the operational status of the room. For details, refer to “Room pop-up window” (page 68).

Communicating with other station

(1) Access Point

1. Access the “**frequency**” and “**WIRES-X DG-ID number**” of another C4FM digital transceiver according to the portable node station for details, refer to the **Operating Manual (WIRES-X Edition)** of the transceiver.
2. Press the **PTT** switch on the other transceiver to communicate with the other station on the Internet.
3. Release the **PTT** switch to return to receive mode.



- When the transceiver of the portable node is transmitting (downlink), “**Access Point**” or “**Direct Operation**” may not be switched by pressing the **[A/B]** key or the **↕** key (FTM-500D only).
 - In the Access Point, a node or a room on the Internet may be connected by operating from another C4FM digital transceiver accessing the portable node. For details, refer to the **Operating Manual (WIRES-X Edition)** of each transceiver.
-

(2) Direct Operation



The FT5D/FT3D/FT2D also has the capability to be used only in the Direct Operation. For details, please refer to “**FT5D/FT3D/FT2D Direct Operation dedicated function**” (page 75).

1. Press the **PTT** switch on the transceiver of the portable node to communicate with the other station.
The TX/BUSY LED lights red but does not transmit radio waves, so the PO meter does not fluctuate.
2. Release the **PTT** switch to return to receive mode.
The TX/BUSY LED lights green while receiving communication from the other station on the Internet, but the S meter does not fluctuate.



In “**Direct Operation**” of Portable HRI Mode with an FT5D/FT3D/FT2D transceiver, the audio from the other station is heard only from the PC speaker. To adjust the receive volume level, turn the **VOL** knob of the transceiver, or adjust the PC speaker volume.

● Confirming the location of the other station

When latitude and longitude data is included in the signal of the other station, the distance and direction of the other station may be displayed in real time on the transceiver screen.

- FT5D:** Press the **[F MENU]** key to display the compass screen. Press the **[F MENU]** key again to return to the normal screen.
- FT3D or FT2D:** Press the **[DISP]** key to display the compass screen. Press the **[DISP]** key again to return to the normal screen.
- FTM-500D:** Press the **[DISP]** key to display the compass screen. Press the **[DISP]** key again to return to the normal screen.
- FTM-400XD/D:** Press the **[DISP] (SETUP)** key to display the compass screen. Press the **[DISP] (SETUP)** key twice to return to the normal screen.
- FTM-300D or FTM-200D:** Press the **[DISP]** key on the connection screen to display the compass screen. Press the **[DISP]** key again to return to the normal screen.
- FTM-100D:** The callsign of the other station, and the direction and distance are displayed alternately at the top of the screen automatically.



On the “**BACKTRACK**” screen (compass screen), operation may not be switched between “**Access Point**” or “**Direct Operation**” by pressing the **[A/B]** key or the **↕** key (FTM-500D only).

Disconnecting from the node or room

To disconnect a node or room on the Internet, from the “**Connection**” menu of WIRES-X software, click “**Disconnect**”.

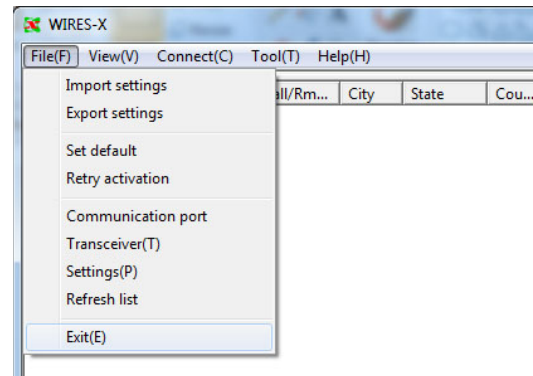
Closing the WIRES-X software

1. From the “**File**” menu, select “**Exit**”

If “Enable WIRES-X Auto Start.” has been selected when installing the WIRES-X software, the software will restart immediately after closing the software.



If you do not want to restart the software, click the WIRES-X icon on the right part of the Windows task bar (or from the hidden indicator list), then select “Quit” or “Auto Start” to remove the check mark.



Operating the transceiver in Portable HRI Mode

You can change settings such as transceiver screen display in use and turn OFF the TX/BUSY Lamp in Portable HRI Mode.

FT5D

Function	Key
Switching between Access Point and Direct Operation	Press the A/B key
BACKTRACK screen (compass screen)	Press the F MENU key (Direct Operation only)
Transmission sound monitor function on or off	Press the V/M key (Direct Operation only)
SQL open	Press the MONI key
SQL level setting	Press the SQL key, then rotate the VOL knob
Switching TX/RX LED on or off	Press and hold the PMG ● key
Dimmer setting	Press and hold the BAND key
Lamp setting	Press and hold F MENU key
Change of the busy detection (noise squelch / DG-ID number match)	Press and hold the A/B key

FT3D/FT2D

Function	Key
Switching between Access Point and Direct Operation	Press the A/B key
BACKTRACK screen (compass screen)	Press the DISP key (Direct Operation only)
Transmission sound monitor function on or off	Press the V/M key (Direct Operation only)
SQL open	Press the MONI key
SQL level setting	Press the SQL key, then rotate the VOL knob (FT3D) or the DIAL knob (FT2D)
Switching TX/RX LED on or off	Press and hold the V/M key
Dimmer setting	Press and hold the BAND key
Lamp setting	Press and hold DISP key
Change of the busy detection (noise squelch / DG-ID number match)	Press and hold the A/B key

FTM-500D

Function	Key
Switching between Access Point and Direct Operation	Press the ↕ key
BACKTRACK screen (compass screen)	Press the DISP key (Direct Operation only)
SQL level setting	Press the Main band VOL/SQL knob key and rotate the Main band VOL/SQL knob
Turning the backlight ON and OFF	Press and hold the DISP key
Dimmer setting	Rotate the FUNC knob
Change of the busy detection (noise squelch / DG-ID number match)	Press and hold the ↕ key

FTM-400XD/D

Function	Key
Switching between Access Point and Direct Operation	Press the B-Band DIAL knob
BACKTRACK screen (compass screen)	Press the DISP (SETUP) key (Direct Operation only)
SQL level setting	Touch the [SQL] and rotate the A-Band DIAL knob
Turning the display ON and OFF	Press and hold the DISP (SETUP) key
Dimmer setting	Rotate the A-Band DIAL knob
Display Contrast setting	Rotate the B-Band DIAL knob
Change of the busy detection (noise squelch / DG-ID number match)	Press and hold the B-Band DIAL knob

FTM-300D/FTM-200D

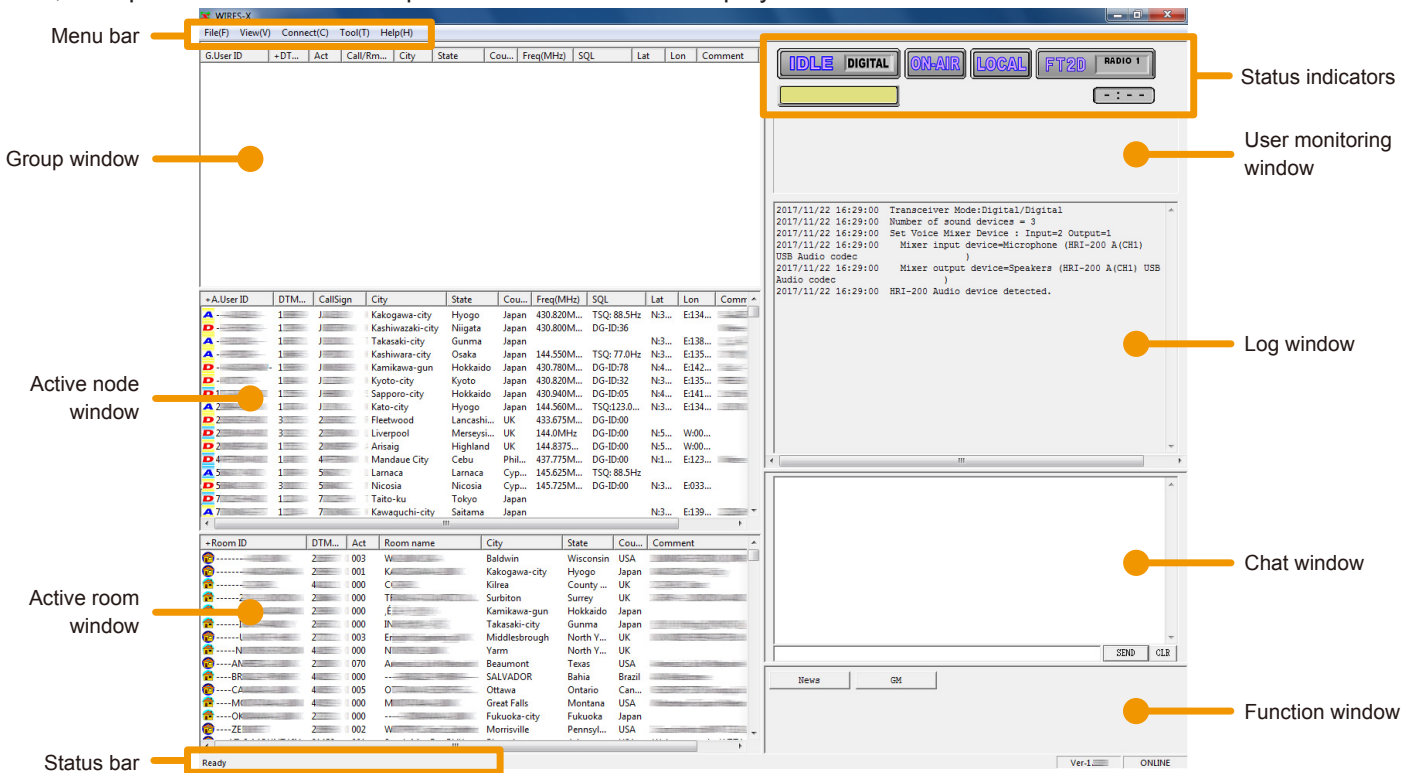
Function	Key
Switching between Access Point and Direct Operation	Press the A/B key
BACKTRACK screen (compass screen)	Press the DISP key (Direct Operation only)
SQL level setting	Press the SQL key and rotate the A-Band DIAL knob (FTM-300D) or the DIAL knob (FTM-200D)
Turning the backlight ON and OFF	Press and hold the DISP key
Dimmer setting	Rotate the A-Band DIAL knob (FTM-300D) Rotate the DIAL knob (FTM-200D)
Change of the busy detection (noise squelch / DG-ID number match)	Press and hold the A/B key

FTM-100D

Function	Key
Switching between Access Point and Direct Operation	Press the A/B(DW) key
SQL level setting	Press the SQL (VOICE) key and rotate the DIAL knob
Selects the contents of sub frequency display	Press the DISP (SETUP) key
Turning the display ON and OFF	Press and hold the DISP (SETUP) key
Dimmer setting	Rotate the DIAL knob
Change of the busy detection (noise squelch / DG-ID number match)	Press and hold the A/B (DW) key

WIRES-X Software Main Screen

On the left side of the main screen, the list of the active node stations and the active rooms is displayed. On the right side, the operational status of the portable node station is displayed.



Menu bar:

Calls the WIRES-X software main functions. For details on each menu, refer to “Main Menu” (page 74) of the WIRES-X Connection Kit HRI-200 Instruction Manual.

Group window:

Displays active nodes and rooms arranging the list based on the setting.

Active node window:

Active WIRES-X nodes are listed. The node station type and connection status are indicated by icons.

• Node Icons

Idling	Connecting	Type
		Portable Digital Node Station
		Digital Node Station
		Analog Node Station
		GM Node Station

Active room window:

Active WIRES-X rooms are listed. The room type and connection status are indicated by icons.

• Room Icons

Idling	Connecting	Type
		Open room (Only the Digital Nodes may be connected)
		Open room
		Closed room
		GM room

Status bar: Displays information such as the WIRES-X software status and descriptions of a menu item pointed by the cursor.
For details, refer to “**Displaying the operating instructions**” (page 92) of the WIRES-X Connection Kit HRI-200 Instruction Manual.

Status indicator: Displays the status of your node station with icons.

• **Connection status of the transceiver**



The transceiver is connected. (The transceiver model name is displayed.)



The transceiver is connected. (The transceiver model name is unknown.)



The transceiver is not connected, or the connection is incorrect.

• **Operating status** Connection status to a node station or room on the Internet and operating mode of your node station are shown.



Not transmitting (DIGITAL: Digital node station, GM: GM node station)



Transmitting (DIGITAL: Digital node station, GM: GM node station)

• **User ID of the connection destination** The user ID information of the Node station / Room that are connected will be shown.



Not connecting to another Node station (blank)



Connecting to another Node station (indicated User ID)

• **Transmitting status** Shows whether or not your Node station transmits signals.

Click this icon to toggle between transmit prohibit and release alternately.



Not transmitting



Transmitting



Prohibit transmission

• **Receiving status** The signal receiving status of the node and the repeating status of the received signal are shown.



Not receiving



Receiving an analog signal, or digital signal whose DG-ID number does not match (not relaying)



Receiving a digital signal whose DG-ID number matches (not relaying)



It receives reception of a digital signal whose DG-ID number matches and relays it to other node stations or rooms via the Internet.

• **Transmission timeout timer**

When sending, it counts down and displays the remaining time (Up to 3 minutes) until automatic transmission stops.

User monitoring window:

Displays the information below the status indicators, of the digital Node station (mobile or fixed) that is accessing your Node station.

Log window:

On the right side of the main screen, the window in the middle shows the WIRES-X software operating status.

Chat window :

The chat history is shown in the window. There is a text entry field at the bottom of the window where you can chat with the owner of the node or room you are connecting to.

Function window :

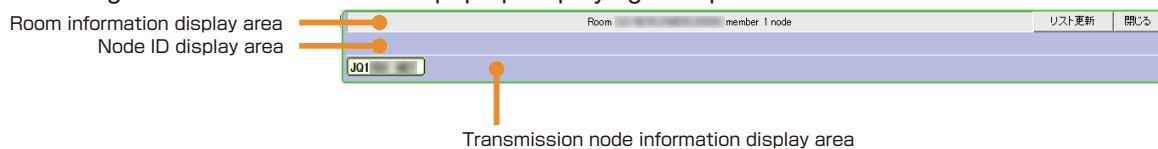
There are dedicated buttons for other functions.



For other details of each display, refer to “**Main Screen**” (page 66) of the WIRES-X Connection Kit HRI-200 Instruction Manual.

● Room pop-up window

When connecting to the room a window will pop up displaying the operational status of the room.



Room information

display area: Displays the Room User ID, DTMF ID and the number of activities (the number of nodes connecting to the room)

Transmission node

information display area: Displays information of a node or digital node which is currently transmitting.

Node ID display area: Lists the IDs of nodes connecting to the room.

[Refresh] button: Click to update the active ID list window on the main screen.

[Close] button: Click to close the room pop-up window.



Even after closing the room pop-up window, the room pop-up window can be displayed again by clicking "**Connect ID window**" from the "**View**" menu when connected to the room.

Functions to use as necessary

Audio volume adjustment of PC (Portable HRI Mode only)

Refer to “Adjusting Audio Level in the Access Point (Portable HRI Mode)” or “Adjusting Audio Level in the Direct Operation (Portable HRI Mode)” (page 71) according to the mode that is in use.

Adjusting Audio Level in the Access Point (Portable HRI Mode)



Audio level adjustment should be done with no connection to the node station or room.

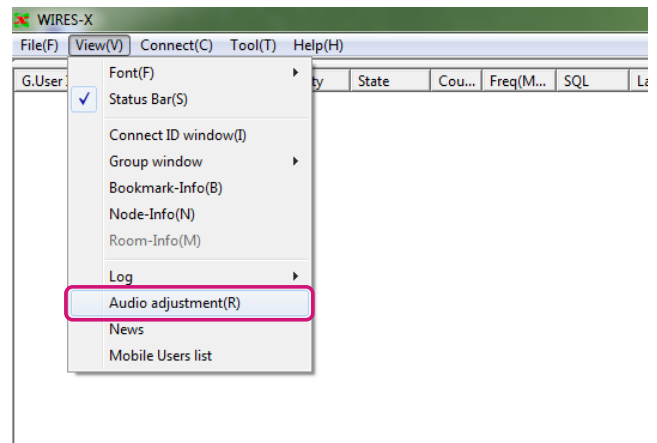
● Receive audio level adjustment (PC microphone input level)



Adjust the volume level so that the “VOL bar graph” is 50% by turning the VOL knob of FT5D/FT3D/FT2D, and then make the following adjustments. Also, when using FT5D/FT3D/FT2D as a transceiver of a Portable Digital Node station, adjust it so that it is almost the same volume level.

1. From the “View” menu, click [Audio adjustment].

The “Audio adjustment” window will appear.



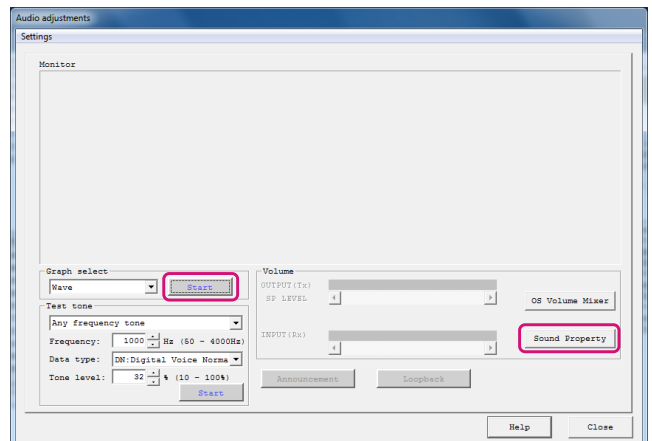
2. Click [Start] in the “Graph select” area.

3. Click [Sound Property].

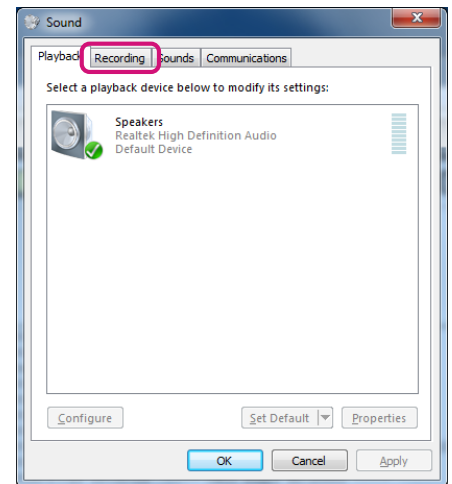
The WINDOWS “Sound” window opens.



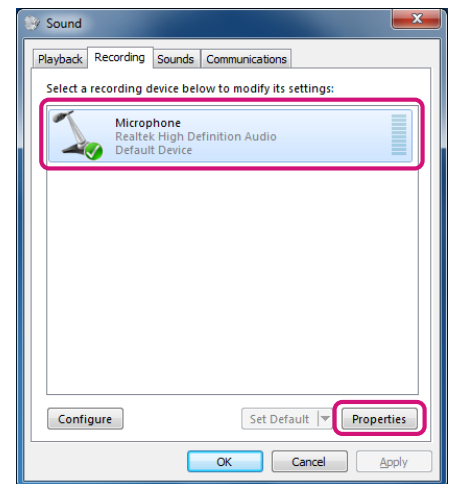
For Portable Digital Node stations, adjust the audio level with the WINDOWS sound setting.



4. Click the **[Recording]** tab in the WINDOWS “Sound” window.





5. Click **[Microphone]**, then click the **[Properties]** button.
The microphone properties will open.



6. Click the **[Levels]** tab.

7. While transmitting “1” of DTMF on a C4FM digital transceiver set to the same frequency and DG-ID number as the Portable Digital Node station, move the **[Slider]** to adjust so that the peak is not over the dotted line.

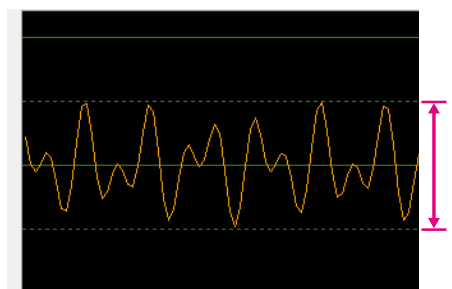
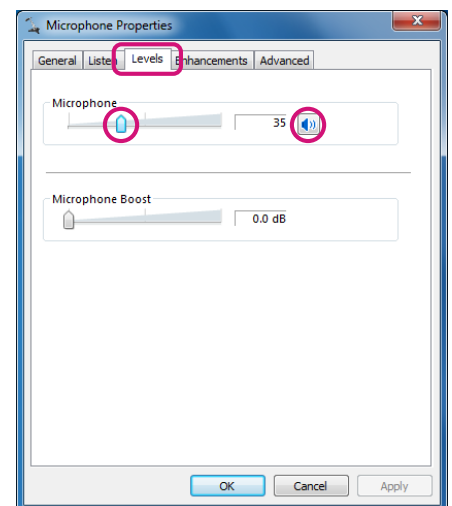


If the microphone input is muted, click the icon  on the right side of the slider to cancel mute .

8. Press the **[OK]** button several times to close all Windows setting screens.

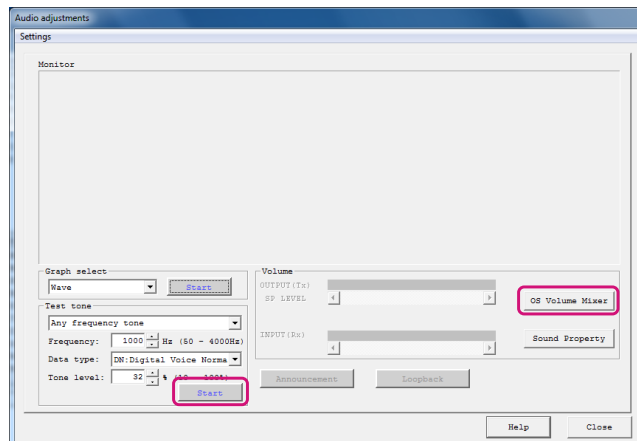
Completes the microphone input level adjustment of the personal computer.

Continue to adjust the speaker output level of the personal computer.



● **Audio level adjustment of transmission (PC speaker output level)**

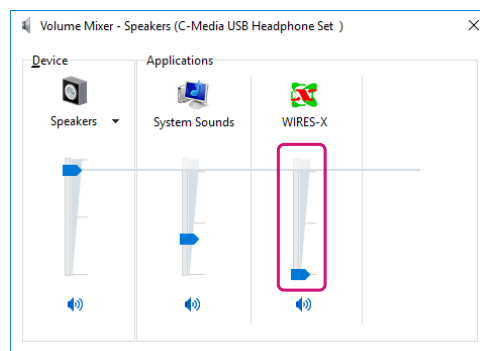
1. Click **“OS Volume Mixer”**.
The Windows **“Volume Mixer”** window opens.
2. Click **“Start”** in the **“Test tone”** area.
Portable Digital Node station transmits.



3. It is received by the C4FM digital transceiver which has the same setting as the frequency and the DG-ID number of the Portable Digital Node station.
4. Adjust the **[WIRES-X slider]** of the Volume Mixer so that it will be distortion free received sound.



- If the speaker output is muted, click the icon “” at the bottom of the slider to release the mute “”.
- If the audio level of the transmission is too high or too low, the sound may be distorted.



5. Click **[TX]** to stop transmitting.
6. Click the **“x”** button at the top right of the **“Volume Mixer”** window to close.

The audio level adjustment of Access Point is completed.

Adjusting Audio Level in the Direct Operation (Portable HRI Mode)



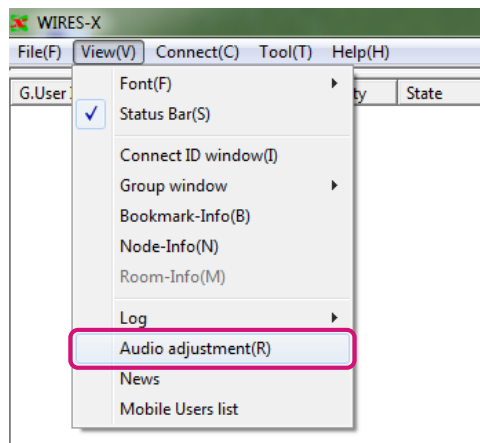
Audio level adjustment should be done with no connection to the node station or room.



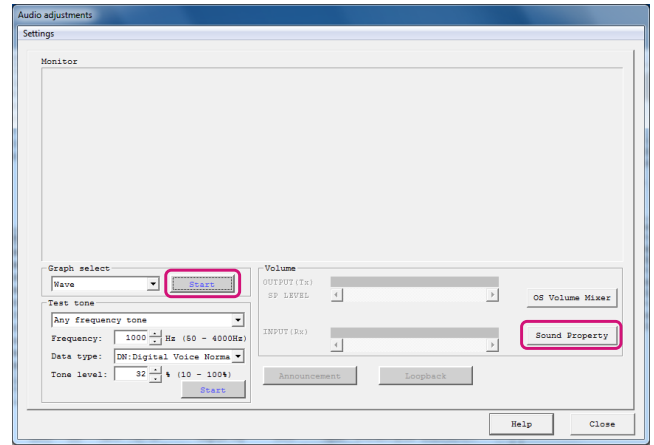
When communicating with an analog node station via direct operation using the FT5D/FT3D/FT2D transceiver, press the **[V/M]** key to turn ON the analog voice output (uplink), before making the following settings. An **“* ”** will appear on the screen at the right side of the station call sign. For details, refer to **“Output of analog audio (uplink) setting”** (page 50).

● **Adjusting the microphone input level of the personal computer**

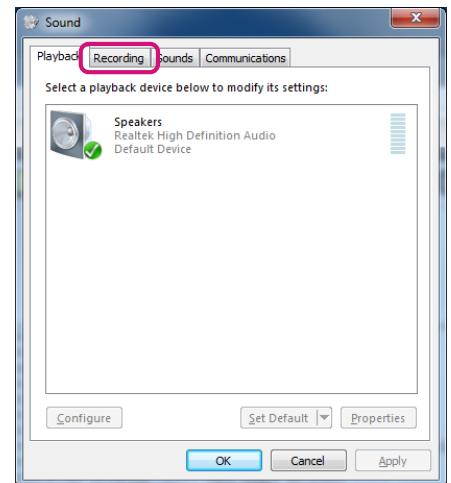
1. From the **“View”** menu, click **“Audio adjustment”**.
The **“Audio adjustment”** window will appear.



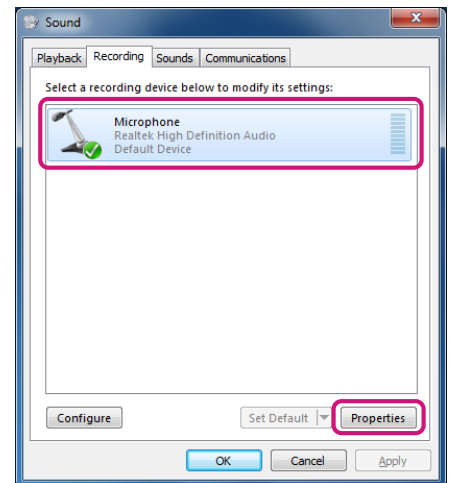
2. Click **[Start]** in the “**Graph select**” area.
Waveform monitor is enabled.
3. Click **[Sound Property]**.
The WINDOWS “**Sound**” window opens.



4. Click the **[Recording]** tab in the WINDOWS “**Sound**” window.



5. Click **[Microphone]**, then click the **[Properties]** button.
The microphone properties will open.



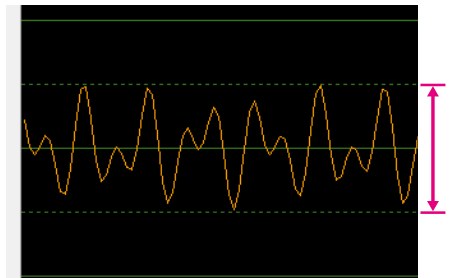
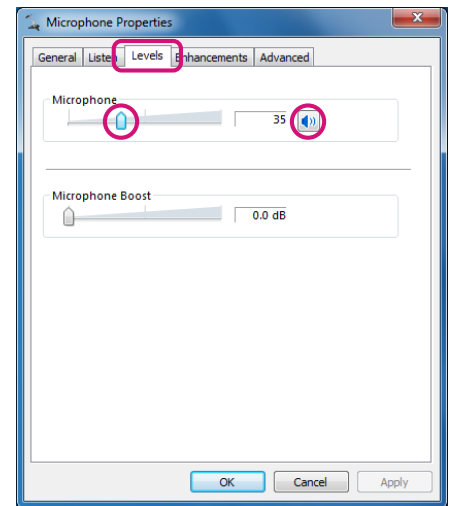
6. Click the **[Levels]** tab.



If the microphone input is muted, click the icon "🔇" on the right side of the slider to cancel mute "🔊".

7. Press the **PTT** switch of the transceiver connected to the PC and adjust the microphone level while talking with a normal voice level.

Make the waveform as large as possible while the waveform displayed on the waveform monitor does not exceed the dotted line or the peak of the waveform does not collapse.

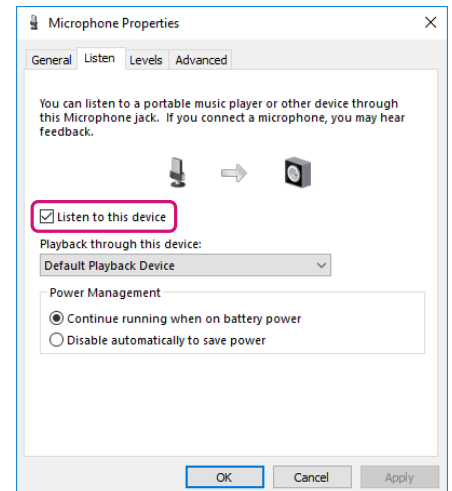


8. **[This setting is necessary only when using the FT5D, FT3D or FT2D transceiver]**

Click the **[Listen]** tab and check "Listen to this device".



Depending on the computer, there may be a no **[Listen]** tab. In that case, proceed to step 9 as it is.



9. Press the **[OK]** button several times to close all Windows setting screens.

The microphone input level adjustment of the personal computer is completed with the above.

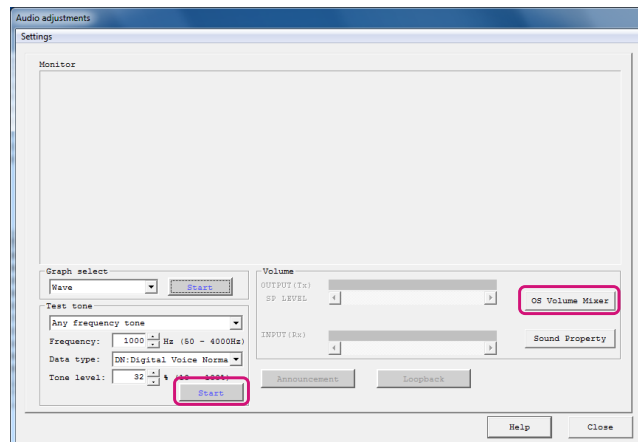
Continue to adjust the speaker output level of the personal computer.

● Adjust speaker output level of PC



Adjust the volume level so that the “VOL bar graph” is 50% by turning the VOL knob of transceiver, and then make the following adjustments. Also, when using FT5D/FT3D/FT2D as a transceiver of a Portable Digital Node station, adjust it so that it is almost the same volume level.

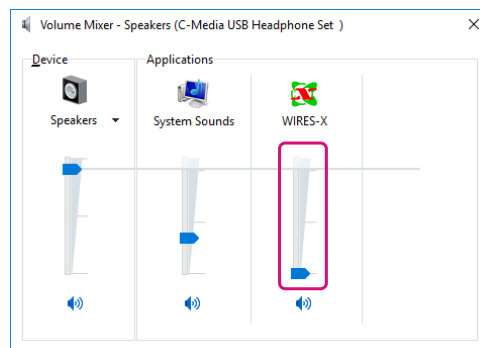
1. Click “OS Volume Mixer”.
The WINDOWS “Volume Mixer - Speakers” window opens.
2. Click [Start] in the “Test Tone” area.
A test tone is output.



3. Adjust the volume level of “WIRES-X” on the “Volume Mixer - Speakers” screen so that the test audio heard from the PC speaker will be easy to hear.
When adjustment is completed, click the [Start] button again, to stop the test sound.



- If the speaker output is muted, click the icon “” at the bottom of the slider to release the mute.
- If the volume level of “Speaker/Headphone” is too low, adjust the volume so that it is easy to hear.

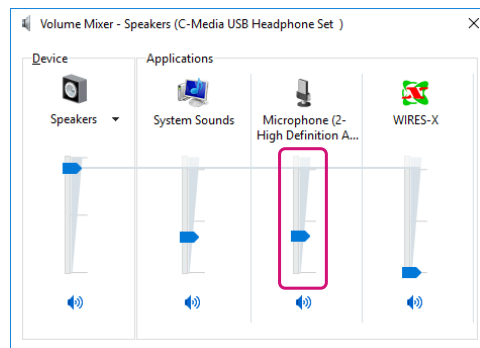


4. **[This setting is necessary only when using the FT5D/FT3D/FT2D transceiver]**

Adjust the volume level of the “Microphone” on the “Volume Mixer - Speakers” screen so that the voice of the partner station operating in the digital mode will be easy to hear.

When the adjustment is completed, proceed to step 7.

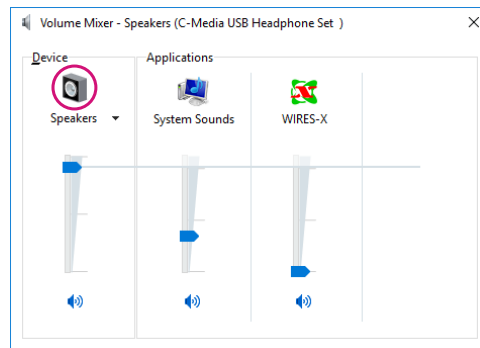
Depending on the computer, this setting item may be missing in the volume mixer. In this case, proceed to step 5.



5. **[This setting is necessary only when using the FT5D/FT3D/FT2D transceiver]**

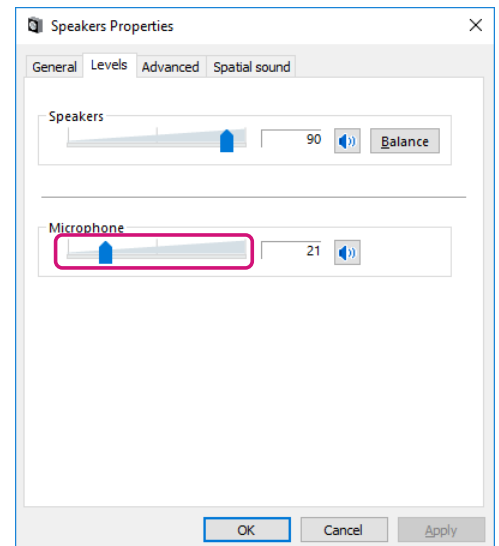
Click the “Speakers” icon on the “Volume Mixer - Speakers” screen.

The “Speakers Properties” screen opens.



6. **[This setting is necessary only when using the FT5D/FT3D/FT2D transceiver]**

Click the [Levels] tab on the “Speakers Properties” screen, then adjust the volume level of “Microphone” so that the volume of the other station operating in digital mode will be adequate.



7. Click the “✕” button at the top right of the “Volume Mixer” window to close.

The audio level adjustment of Direct Operation is completed.

FT5D/FT3D/FT2D Direct Operation dedicated function

FT5D/FT3D/FT2D has a setting function related to analog audio that can be used only in **Direct Operation** of Portable HRI Mode.

● Output of analog voice (uplink) setting

Set whether to output audio to the analog station when talking by pressing the PTT switch.

Each time the [V/M] key is pressed, it switches between “ON” and “OFF”.

OFF : Does not output sound to the analog station. (Default setting)

Turn it OFF to do Internet communication only in digital mode.

ON : Audio output to the analog station. “*” Is displayed on the right side of the call sign of the screen.

Always turn on Internet communication when using the analog communication in the analog mode.



- When set to “OFF”, the other station operating in the analog mode cannot hear this voice.
- When set to “ON”, your voice is output from the PC or FT5D/FT3D/FT2D speaker.

● Level adjustment of analog audio output (uplink)



Since the level of the analog sound is set with the personal computer, it is not normally necessary to adjust this level.

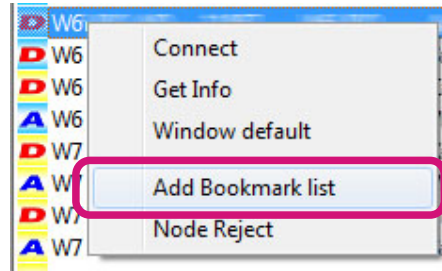
If the **VOL** knob is turned while pressing the **PTT** switch while the analog audio output (uplink) setting is “ON”, it will be displayed as LEVEL XX (XX: 0 to 31) and the volume level of the analog audio to be sent to the other station may be adjusted. (The default setting is 10.)

Bookmarking frequently connected Nodes or Rooms

When (bookmark) node stations and rooms are saved, they are displayed in the group window, so you can easily access them.

Bookmarking Nodes or Rooms

1. Click on the node station or room you want to bookmark in “Active node window” or “Active room window”.
2. Right-click the selected “Node” or “Room” to display the command list.
3. Click the [Add to Bookmark].





Copyright 2023
YAESU MUSEN CO., LTD.
All rights reserved.

No portion of this manual may be
reproduced without the permission of
YAESU MUSEN CO., LTD.

YAESU MUSEN CO., LTD.

Omori Bellport Building D-3F
6-26-3 Minami-Oi, Shinagawa-ku, Tokyo, 140-0013, Japan

YAESU USA

6125 Phyllis Drive, Cypress, CA 90630, U.S.A.

YAESU UK

Unit 12, Sun Valley Business Park, Winnall Close
Winchester, Hampshire, SO23 0LB, U.K.