

# Virtual COM Port Driver Installation Manual

Installing the virtual COM port driver software on a computer makes possible CAT communication via a USB cable to the SCU-17 or an compatible transceivers. This will allow computer control of TX (PTT, KEY, FSK), and the audio In/Out interface (except the FT-891). The COM port is also used for updating the transceiver firmware.

The SCU-17 or an compatible transceiver have two virtual COM ports, which can be used for CAT communication and TX control operations.

Please read this entire manual carefully. If you agree to the content of this manual, you may download and install the virtual COM port driver.



Do not connect the SCU-17 or transceiver to the computer via the USB cable until the virtual COM port driver installation process has been completed. Connecting the SCU-17 or transceiver to the computer via the USB cable before the driver installation has been completed may result in the wrong driver being installed, preventing proper operation.

## Operating Environment

### Supported Operating Systems

- Microsoft® Windows® 11
- Microsoft® Windows® 10
- Microsoft® Windows® 8.1

### Port

USB port (USB1.1/USB2.0)

### Cable

Use a commercially available A-B USB cable

### Virtual COM Port Driver

- Microsoft® Windows® 11
- Microsoft® Windows® 10  
Compatible driver: **CP210x Universal Windows Driver**
- Microsoft® Windows® 8.1\*  
Compatible driver: **CP210x Windows Drivers**

\*The previous version of the virtual COM port driver “**CP210x Windows Drivers**” (v6.7.6) for Windows 8.1 can be downloaded from the “**DOWNLOADS**” tab of the Silicon Labs, Inc. website (<http://www.silabs.com/products/mcu/pages/usbtouartbridgevcpdrivers.aspx>). (As of Feb 2022)



This driver installation program is provided by [Silicon Labs, Inc.](http://www.silabs.com)

The latest virtual COM port driver can be downloaded from the “**DOWNLOADS**” tab of the Silicon Labs, Inc. website (<http://www.silabs.com/products/mcu/pages/usbtouartbridgevcpdrivers.aspx>). (As of Feb 2022)

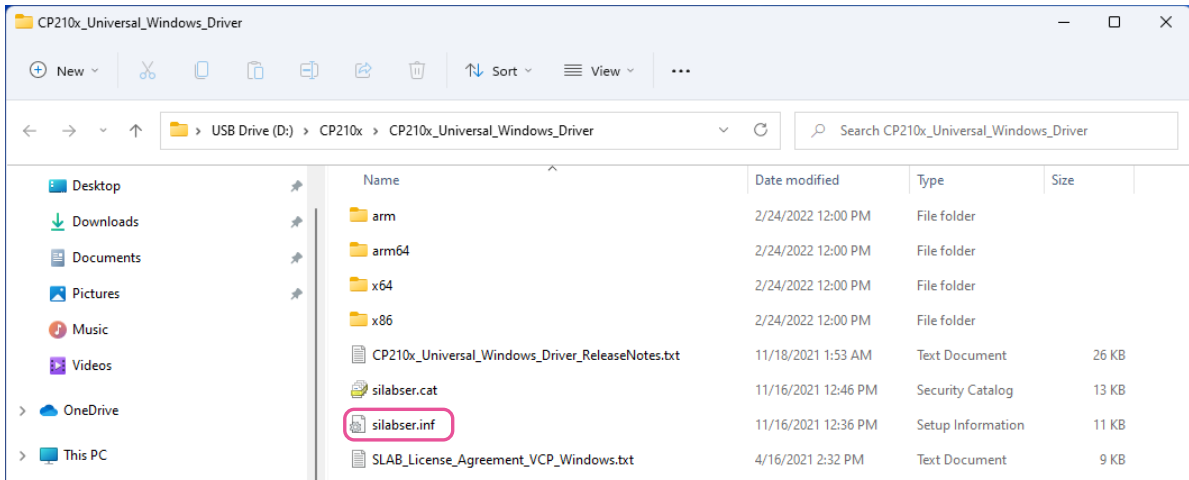
## Installing the Virtual COM Port Driver

The installation procedure differs depending on the version of Windows:

- **Microsoft® Windows® 11 or Microsoft® Windows® 10**  
“For Windows 11 or Windows 10” (see page 2)
- **Microsoft® Windows® 8.1**  
“For Windows 8.1” (see page 4)

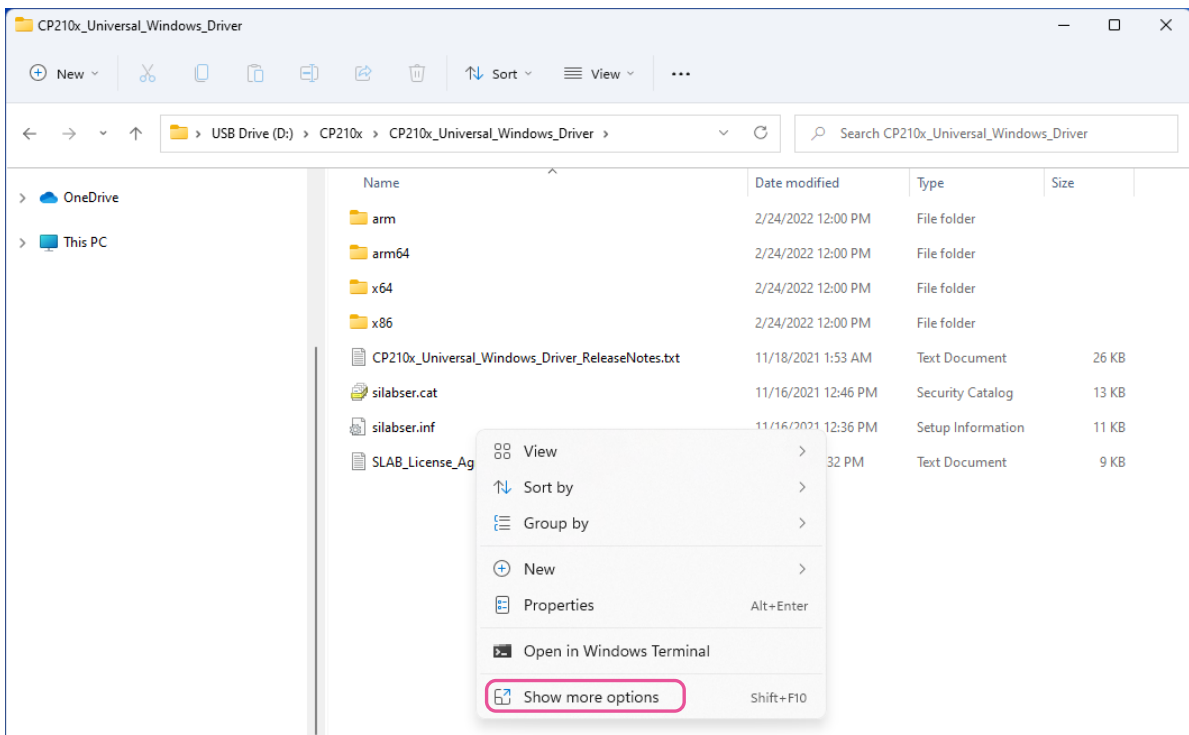
## For Windows 11 or Windows 10

1. Unzip the downloaded (CP210x\_Universal\_Windows\_Driver.zip) file.
2. Right-click the “silabser.inf” file in the folder.

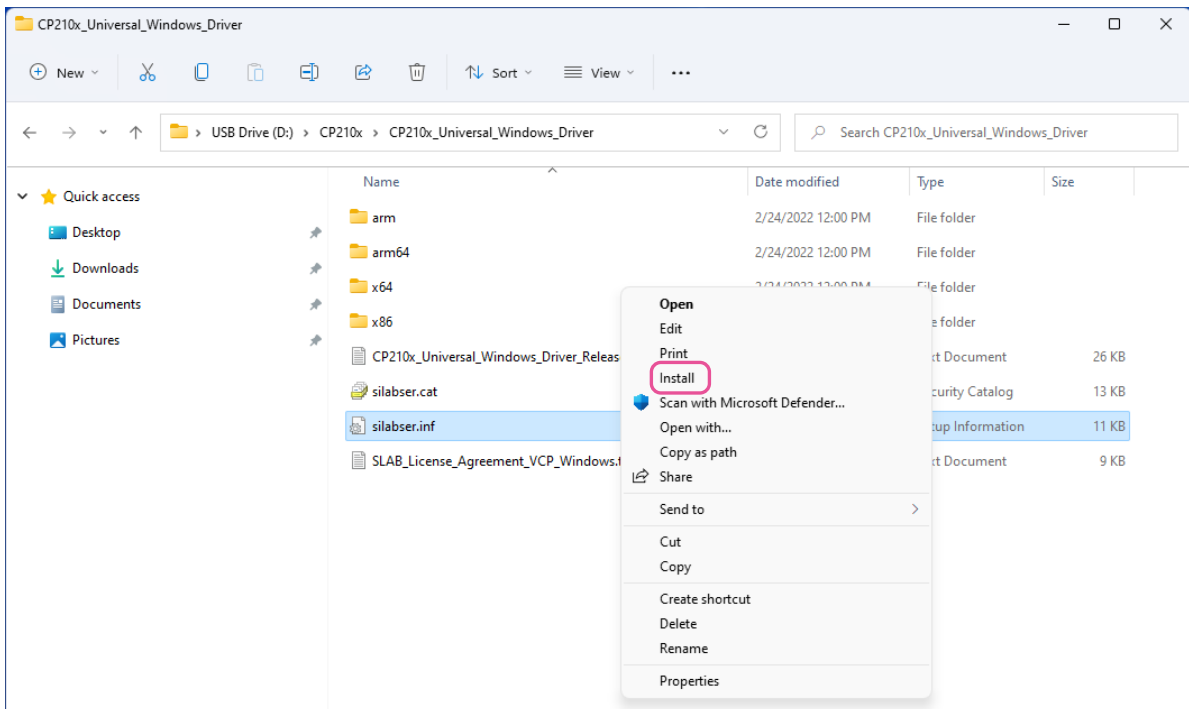


3. Click “Show more options”.

For Windows 10, proceed to step 4.



4. Click **“Install”**.



5. This completes the driver installation process.

## For Windows 8.1

When you unzip the “CP210x Windows Drivers.zip” file, “CP210xVCPInstaller\_x64.exe” and “CP210xVCPInstaller\_x86.exe” will be generated. Choose the appropriate file depending on the OS version of your computer as follows:

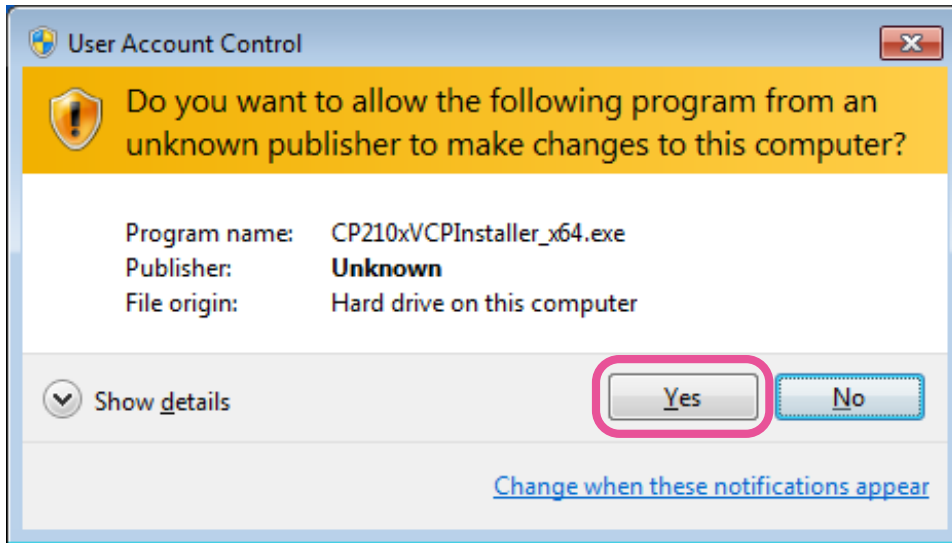
- OS for 64 bit version : “CP210xVCPInstaller\_x64.exe”
- OS for 32 bit version : “CP210xVCPInstaller\_x86.exe”

1. Unzip the downloaded (CP210x\_VCP\_Windows.zip) file.
2. Double-click “CP210xVCPInstaller\_x64.exe”\*

The following window will appear.

\* If the OS version of your computer is 32 bit version, you must choose “CP210xVCPInstaller\_x86.exe”.

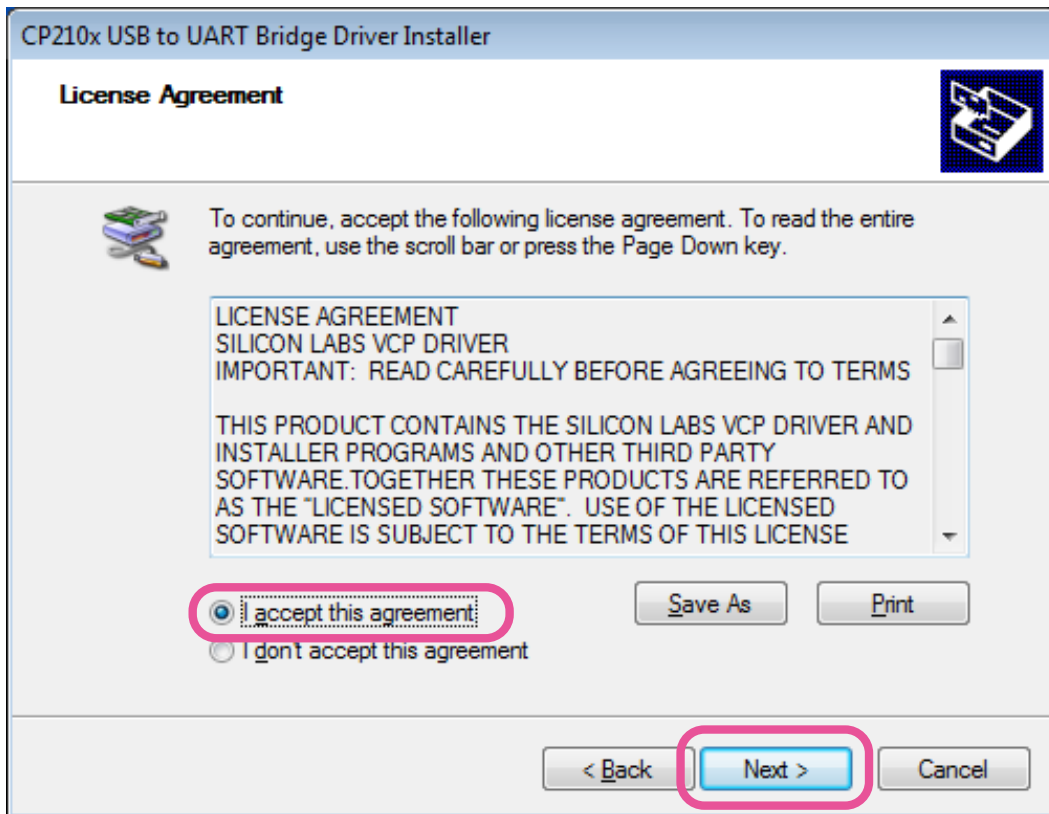
3. Click the “Yes” button.



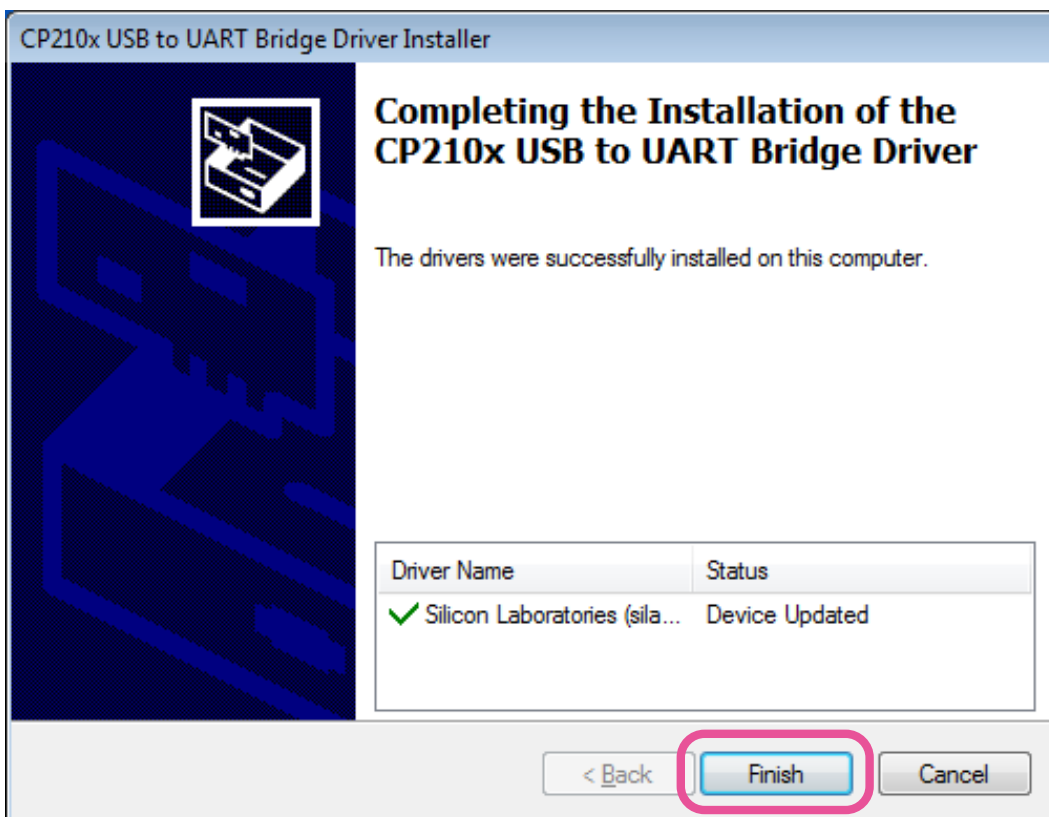
4. The following window will be displayed. Click the “Next >” button.



5. The “License Agreement” window will be displayed. Please read the License Agreement, and, if you agree to the terms therein, click the check box next to “I accept this agreement”, and click the “Next >” button.



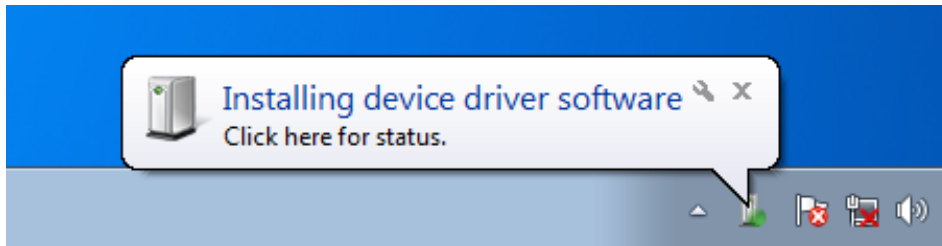
6. The “Completing the Installation of the CP210x USB to UART Bridge Driver” window will be displayed. Click the “Finish” button.



7. This completes the driver installation process.

## • Connecting the SCU-17 or Transceiver and the Computer

- Connect the computer and the SCU-17  
Connect the computer and the SCU-17 via USB cable.  
A message such as the one below will be displayed, and the computer will recognize the new hardware and automatically begin device driver installation.
- Connect the computer and the transceiver  
Connect the computer and the transceiver via USB cable, and then turn the transceiver on.  
A message such as the one below will be displayed, and the computer will recognize the new hardware and automatically begin device driver installation.



When "Your devices are ready to use" appears, installation has been completed.  
A reboot confirmation window may be displayed on some computers. If this window appears, follow the on-screen instructions and reboot the computer.  
Once the computer has been rebooted, the virtual COM driver and USB audio driver will be installed.  
(The standard Windows® USB audio driver will be automatically installed, so you do not need to specify which driver to use.)

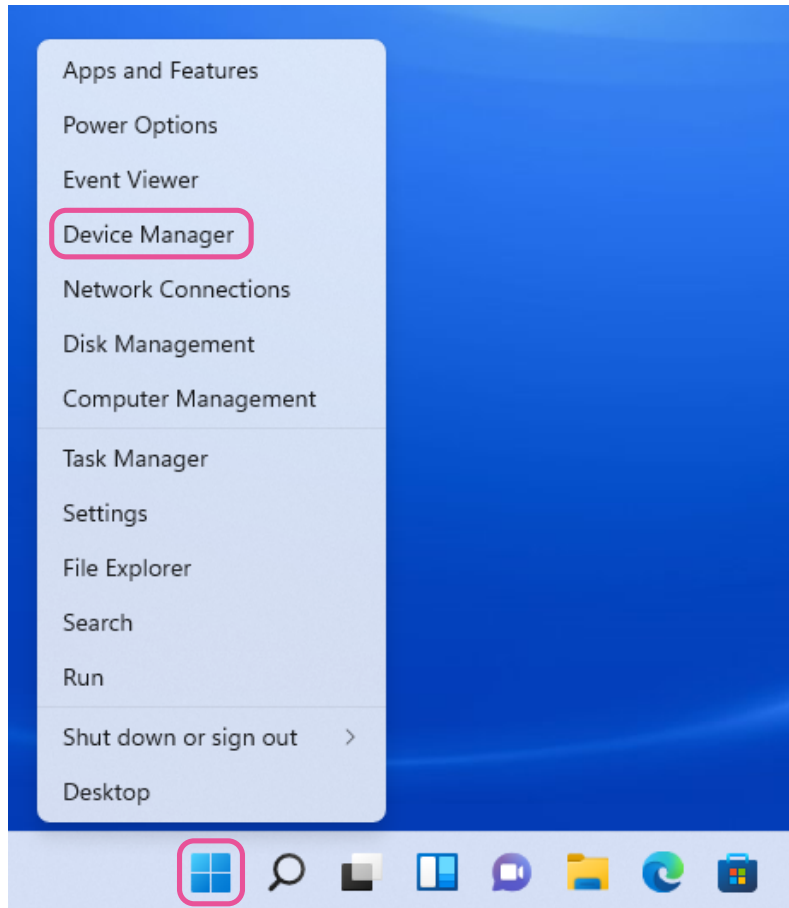
## How to Confirm the Installation, and the COM Port Number

With the SCU-17 or transceiver and computer connected, confirm whether the virtual COM driver has been installed successfully.

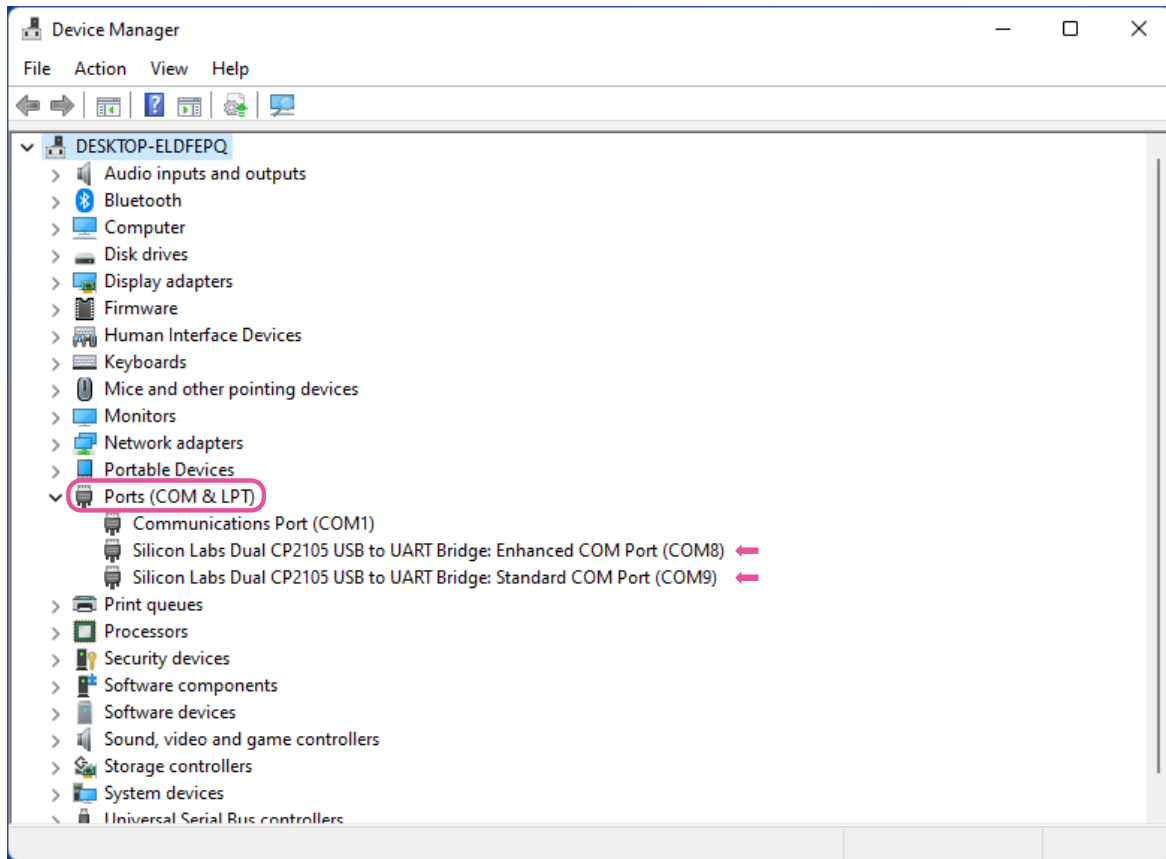
The example below is for Windows® 11.

1. Connect the PC to the transceiver or the SCU-17 with a USB cable, then turn the transceiver **ON**.
2. Right-click the Windows **Start button**, then click "**Device Manager**".

The Device Manager screen opens.



2. On the Device Manager screen, double-click “Port (COM & LPT)”.  
 「Silicon Labs Dual CP210x USB to UART Bridge : Enhanced COM Port (COM\*\*)」  
 「Silicon Labs Dual CP210x USB to UART Bridge : Standard COM Port (COM\*\*)」  
 The number in the “(COM\*\*)” portion may vary from computer to computer.



The SCU-17 or an compatible transceiver contain two virtual COM ports, an **Enhanced COM Port** and a **Standard COM Port**. These ports offer the following functions:

- **Enhanced COM Port:** **AT Communications (Frequency and Communication Mode Settings) and firmware updating**
- **Standard COM Port:** **TX Controls (PTT control, CW Keying, Digital Mode Operation)**

The above window shows that COM8 can be used for CAT communications and firmware updating, and COM9 can be used for TX control (PTT control, CW Keying, Digital Mode Operation).

When performing software port configuration, select the COM port numbers that were confirmed using the procedure above.



- 
- If a “!” or “X” is displayed for the port on the Device Manager, uninstall and reinstall the virtual COM driver.
  - If an SCU-17 or transceiver with a different serial number is connected and turned ON, different COM port numbers will be assigned to it, making it possible to perform individual COM port configurations for separate transceivers.
  - When using the USB cable for TX control, the transceiver may switch to the transmit mode when the computer is started.
  - Always close the application on the computer before disconnecting the USB cable.
-





Copyright 2022

YAESU MUSEN CO., LTD.

All rights reserved.

No portion of this manual may be reproduced without the permission of YAESU MUSEN CO., LTD.

**YAESU MUSEN CO., LTD.**

Tennozu Parkside Building

2-5-8 Higashi-Shinagawa, Shinagawa-ku, Tokyo 140-0002 Japan

**YAESU USA**

6125 Phyllis Drive, Cypress, CA 90630, U.S.A.

**YAESU UK**

Unit 12, Sun Valley Business Park, Winnall Close

Winchester, Hampshire, SO23 0LB, U.K.